

VIICE.VIICE2) 19MAY22

VIICE TWO ARRIVAL (RNAV) Transition Routes

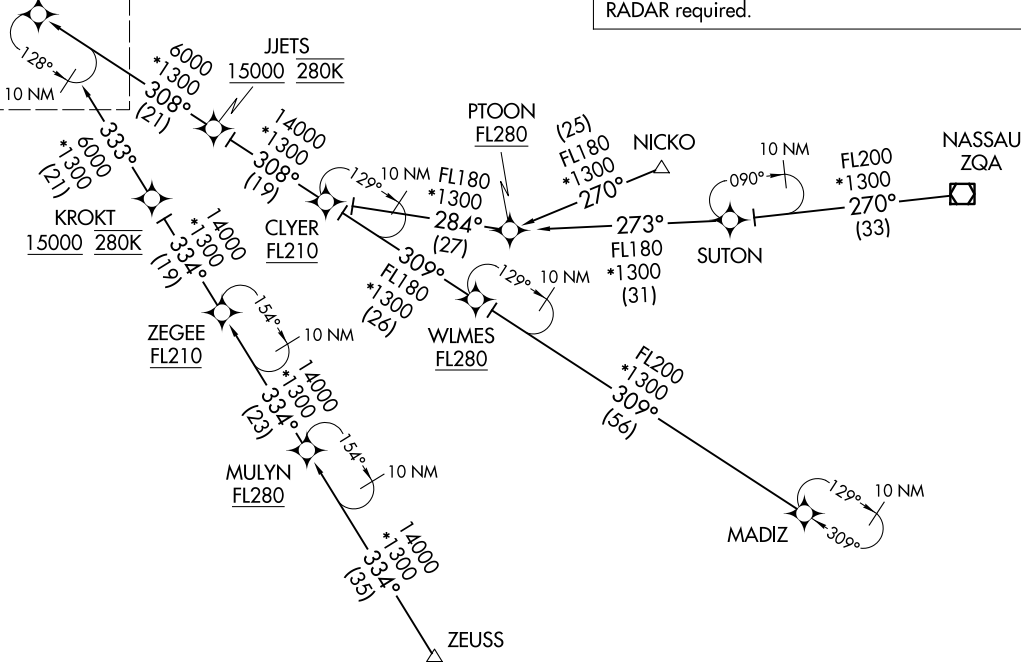
MIAMI, FLORIDA

MIAMI APP CON
120.5 350.225
KHST ATIS ★
132.275 269.9
MIA D-ATIS
119.15
TMB ATIS
124.0
X51 AWOS-3
118.375

See following page for arrival routes.

VIICE
16000

RNAV 1 - DME/DME/IRU or GPS.
ZEUSS, MADIZ, ZQA, NICKO TRANSITION: GPS
RADAR required.



NOTE: Jet aircraft only.
NOTE: Landing east use Rwy 9 Transition, landing west use Rwy 30 Transition. Expect Rwy assignment from MIA approach prior to VIICE.
NOTE: Do not file PTOON or ZEGEE Transition - to be assigned by ATC.

MADIZ TRANSITION (MADIZ.VIICE2)
NASSAU TRANSITION (ZQA.VIICE2)
NICKO TRANSITION (NICKO.VIICE2)
PTOON TRANSITION (PTOON.VIICE2)
ZEGEE TRANSITION (ZEGEE.VIICE2)
ZEUSS TRANSITION (ZEUSS.VIICE2)

(CONTINUED ON FOLLOWING PAGE)

NOTE: Chart not to scale.

VIICE.VIICE2) 22139

VIICE TWO ARRIVAL (RNAV) Transition Routes

MIAMI, FLORIDA

AL-257 (FAA)

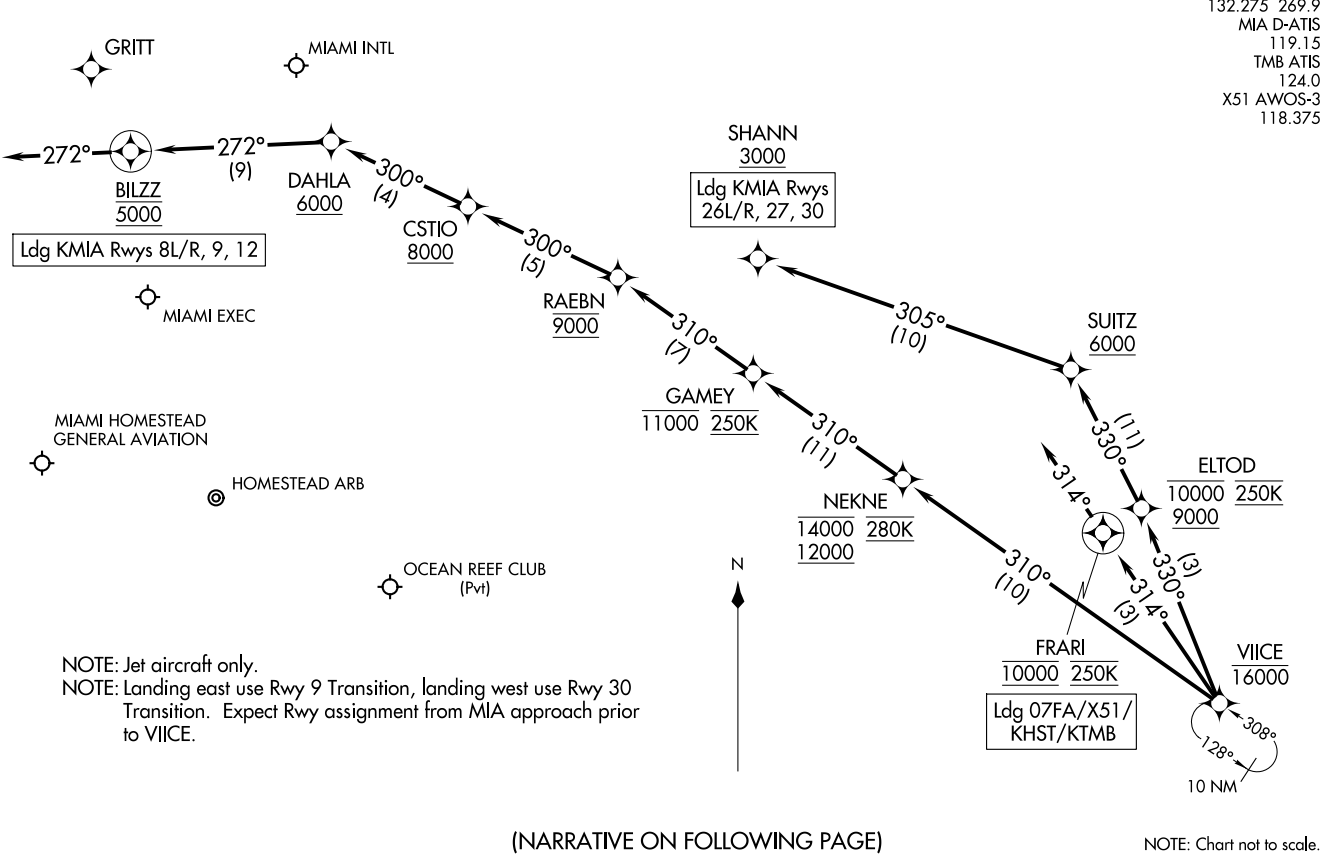
VICE TWO ARRIVAL (RNAV)
(VICE.VICE2) 19MAY22

Arrival Routes

MIAMI, FLORIDA

RNAV 1 - DME/DME/IRU or GPS.
RADAR required.

MIAMI APP CON
120.5 350.225
KHST ATIS ★
132.275 269.9
MIA D-ATIS
119.15
TMB ATIS
124.0
X51 AWOS-3
118.375



(VICE.VICE2) 23222
VICE TWO ARRIVAL (RNAV)

Arrival Routes
AL-257 (FAA)

MIAMI, FLORIDA

ARRIVAL ROUTE DESCRIPTION

LANDING KMIA RUNWAYS 8L/R, 9, 12: From VIICE on track 310° to cross NEKNE between 12000 and 14000 and at 280K, then on track 310° to cross GAMEY at or below 11000 and at 250K, then on track 310° to cross RAEBN at 9000, then on track 300° to cross CSTIO at or above 8000, then on track 300° to cross DAHLA at or above 6000, then on track 272° to cross BILZZ at 5000, then on track 272°. Expect RADAR vectors to final approach course.

LANDING KMIA RUNWAYS 26L/R, 27, 30: From VIICE on track 330° to cross ELTOD between 9000 and 10000 and at 250K, then on track 330° to cross SUITZ at or above 6000, then on track 305° to cross SHANN at or above 3000. Expect ILS Rwy 30 approach or RADAR vectors to final approach course.

LANDING 07FA/X51/KHST/KTMB: From VIICE on track 314° to cross FRARI at 10000 and at 250K, then on track 314°. Expect RADAR vectors to final approach course.

SE-3, 16 APR 2026 to 14 MAY 2026

SE-3, 16 APR 2026 to 14 MAY 2026