

MIDLAND, TEXAS

HI-VOR or TACAN RWY 16R

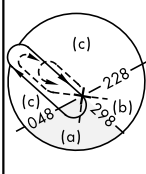
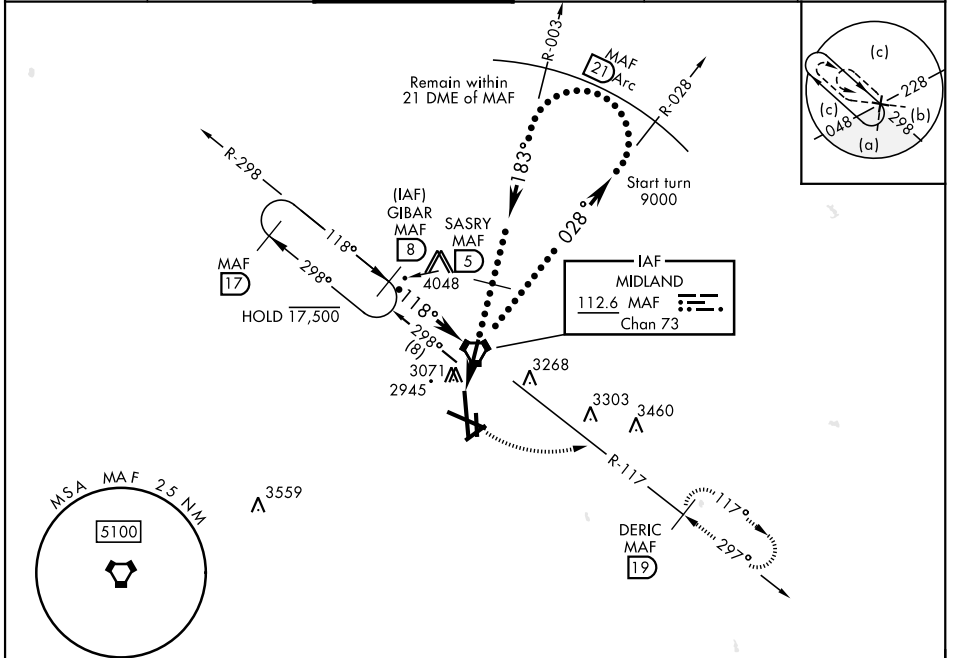
VORTAC MAF 112.6 Chan 73	APCH CRS 183°	Rwy ldg TDZE Arprt Elev 9501 2872 2872	[USAF] MIDLAND INTL AIR AND SPACE PORT (KMAF)
--	-------------------------	--	---

DME required

* Circling Rwy 16L not authorized at night.

MISSED APPROACH: Climb to 3500 then climbing left turn to 4800 on MAF VORTAC R-117 to DERIC/MAF 19° DME and hold.

ATIS ★ 126.8 235.975	APP CON ★ 124.6 290.4	TOWER ★ 118.7(CTAF) 273.45	GND CON 121.9 348.6	CLNC DEL 118.05 317.65	UNICOM 122.95
--------------------------------	---------------------------------	--------------------------------------	-------------------------------	----------------------------------	-------------------------



SC-3, 16 APR 2026 to 14 MAY 2026

SC-3, 16 APR 2026 to 14 MAY 2026

EMERG SAFE ALT 100 NM 7000

VGSI and descent angles not coincident GIBAR MAF 8 MAF VORTAC SASRY MAF 5 MAF 3.1 MAF 1.3 3.29° TCH 50 3.1 NM			3500 4800 MAF R-117	DERIC MAF 19 3020 2902 2899 2976 3025 2974 2878 344 2878 344	ELEV 2872 TDZE 2872
CATEGORY	C	D	E		
S-16R	3400-1½	528	(600-1½)		
CIRCUING*	3440-1½ 568 (600-1½)	3520-2 648 (700-2)	3600-2½ 728 (800-2½)		

MIDLAND, TEXAS 31° 57' N-102° 12' W MIDLAND INTL AIR AND SPACE PORT (KMAF)

Amtd 3 20JUL17

HI-VOR or TACAN RWY 16R

