

# HI-VOR or TACAN RWY 34L

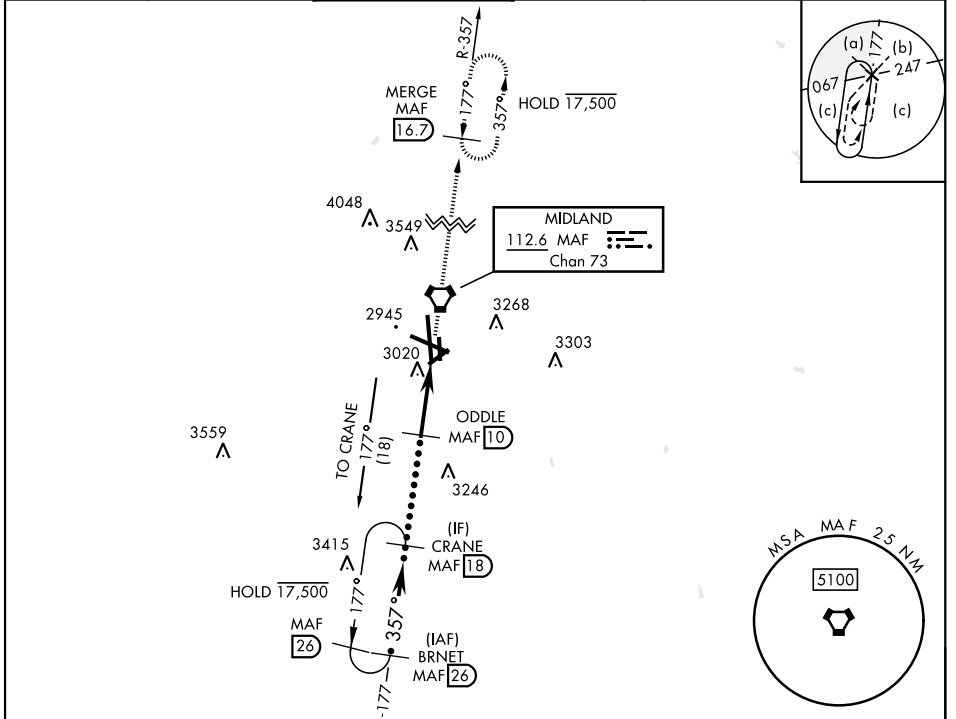
VORTAC MAF <b>112.6</b> Chan <b>73</b>	APCH CRS <b>357°</b>	Rwy Idg TDZE Arprt Elev <b>9501</b> <b>2858</b> <b>2872</b>	[USAF] MIDLAND INTL AIR AND SPACE PORT (KMAF)
--	-------------------------	--	---

DME required

▼ \* Circling Rwy 16L not authorized at night.

MISSED APPROACH: Climb to 4800 direct MAF VORTAC and on MAF VORTAC R-357 to MERGE/MAF 16.7 DME and hold.

ATIS ★ <b>126.8 235.975</b>	APP CON ★ <b>124.6 290.4</b>	TOWER ★ <b>118.7(CTAF) 273.45</b>	GND CON <b>121.9 348.6</b>	CLNC DEL <b>118.05 317.65</b>	UNICOM <b>122.95</b>
--------------------------------	---------------------------------	--------------------------------------	-------------------------------	----------------------------------	-------------------------



EMERG SAFE ALT 100 NM 7000

ELEV 2872	TDZE 2858
-----------	-----------

CATEGORY	C	D	E	
	S-34L	3320-1 $\frac{3}{8}$	462	(500-1 $\frac{3}{8}$ )
	CIRCLING*	3440-1 $\frac{1}{2}$ 568 (600-1 $\frac{1}{2}$ )	3520-2 648 (700-2)	3600-2 $\frac{1}{2}$ 728 (800-2 $\frac{1}{2}$ )

# HI-VOR or TACAN RWY 34L

SC-3, 16 APR 2026 to 14 MAY 2026

SC-3, 16 APR 2026 to 14 MAY 2026