

WAAS CH 69310 W10A	APP CRS 105°	Rwy Ldg 8177 TDZE 2869 Apt Elev 2872
--	------------------------	---

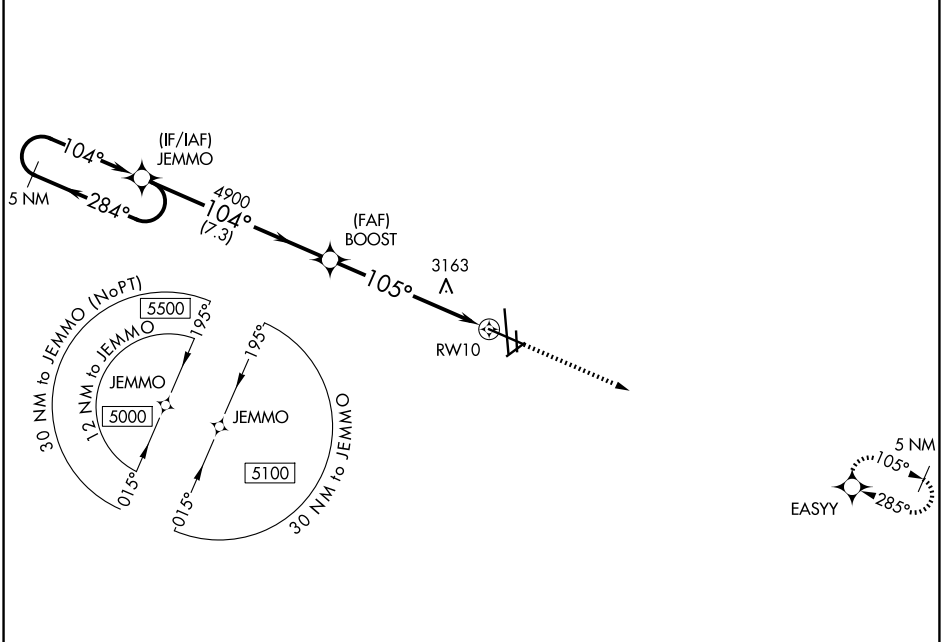
RNAV (GPS) RWY 10

MIDLAND INTL AIR AND SPACE PORT (M.A.F.)

▼ For uncompensated Baro-VNAV systems, LNAV/VNAV NA below -11°C (13°F) or above 25°C (77°F). Circling Rwy 16L NA at night. DME/DME RNP-0.3 NA.
 ** RVR 1800 authorized with use of FD or AP or HUD to DA.

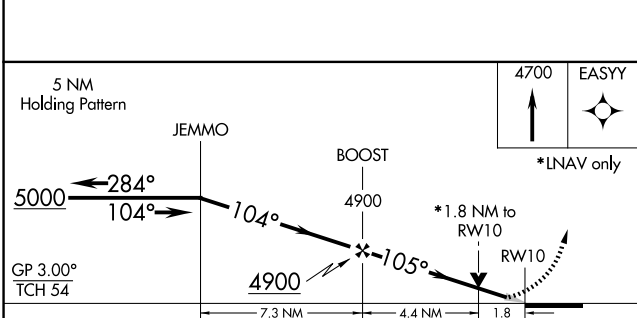
MALSR MISSED APPROACH:
 Climb to 4700 direct EASY and hold.

ATIS 126.8 235.975	MIDLAND APP CON* 124.6 290.4	MIDLAND TOWER* 118.7(CTAF) 0273.45	GND CON 121.9 348.6	UNICOM 122.95
------------------------------	--	--	-------------------------------	-------------------------



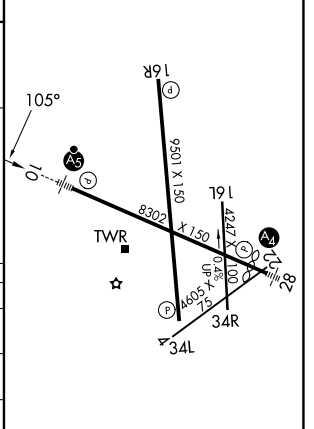
SC-3, 16 APR 2026 to 14 MAY 2026

SC-3, 16 APR 2026 to 14 MAY 2026



ELEV 2872	D	TDZE 2869
-----------	----------	-----------

CATEGORY	A	B	C	D
LPV DA **		3069/24	200 (200-½)	
LNAV/VNAV DA		3394-1¼	525 (600-1¼)	
LNAV MDA	3480/24	611 (700-½)	3480-1⅓	611 (700-1⅓)
CIRCLING	3480-1	608 (700-1)	3480-1¼ 608 (700-1¼)	3520-2 648 (700-2)



REIL Rwy 34L
 MIRL Rwys 4-22 and 16L-34R
 HIRL Rwys 10-28 and 16R-34L