

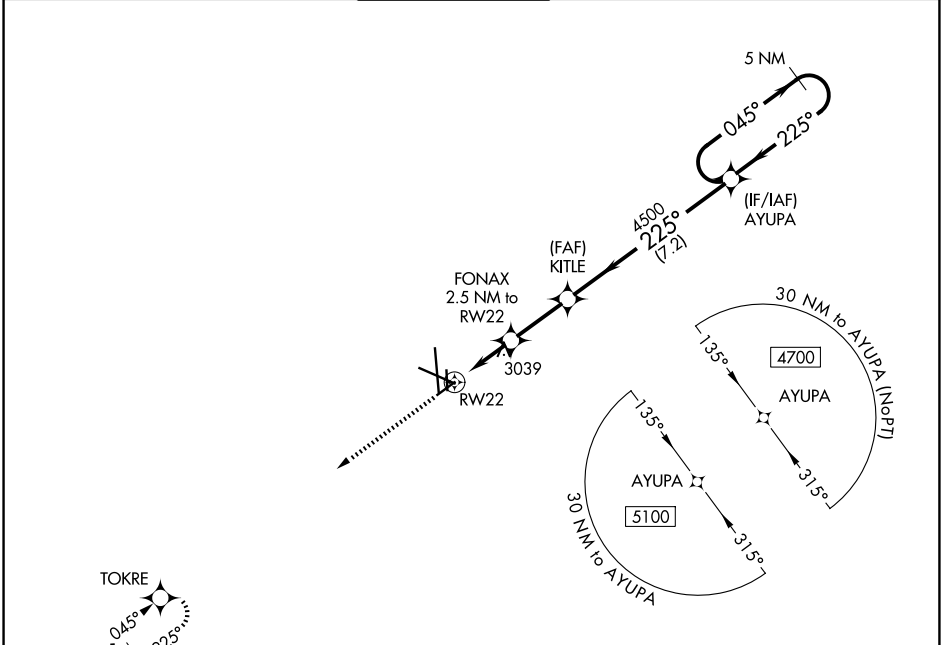
WAAS CH <b>50429</b> <b>W22A</b>	APP CRS <b>225°</b>	Rwy Ldg TDZE Apt Elev	<b>4605</b> <b>2855</b> <b>2872</b>
--	------------------------	-----------------------------	---

# RNAV (GPS) RWY 22

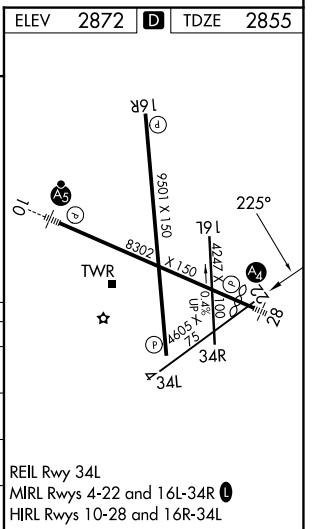
MIDLAND INTL AIR AND SPACE PORT (M.A.F.)

RNP APCH.	MISSED APPROACH: Climb to 5000 direct TOKRE and hold.
<p>▼ For uncompensated Baro-VNAV systems, LNAV/VNAV NA below -11°C or above 25°C. Circling Rwy 16L NA at night.</p>	

ATIS <b>126.8 235.975</b>	MIDLAND APP CON * <b>124.6 290.4</b>	MIDLAND TOWER * <b>118.7(CTAF) 0273.45</b>	GND CON <b>121.9 348.6</b>	UNICOM <b>122.95</b>
------------------------------	---	---	-------------------------------	-------------------------



ELEV 5000	TOKRE	FONAX 2.5 NM to RWY 22	KITLE 4500	AYUPA 4700	5 NM Holding Pattern
*LNAV only		*1.3 NM to RWY 22	*3700	4500	GP 3.00° TCH 50
		1.3	1.2	2.5 NM	7.2 NM
CATEGORY	A	B	C	D	
LPV DA		3055-3/4	200 (200-3/4)		
LNAV/VNAV DA		3317-13/8	462 (500-13/8)		
LNAV MDA	3320-1	465 (500-1)	3320-13/8	465 (500-13/8)	
CIRCLING	3440-1	568 (600-1)	3440-1 1/2	3520-2	648 (700-2)



SC-3, 16 APR 2026 to 14 MAY 2026

SC-3, 16 APR 2026 to 14 MAY 2026