

VORTAC MAF <b>112.6</b> Chan 73	APP CRS <b>183°</b>	Rwy Ldg TDZE Apt Elev	<b>9501</b> <b>2872</b> <b>2872</b>
---------------------------------------	------------------------	-----------------------------	---

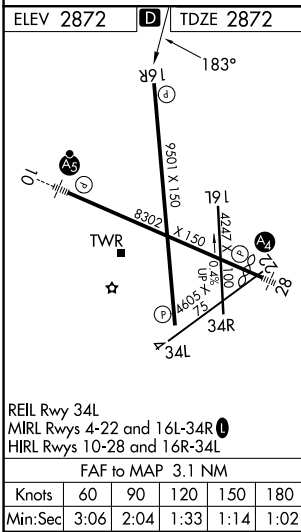
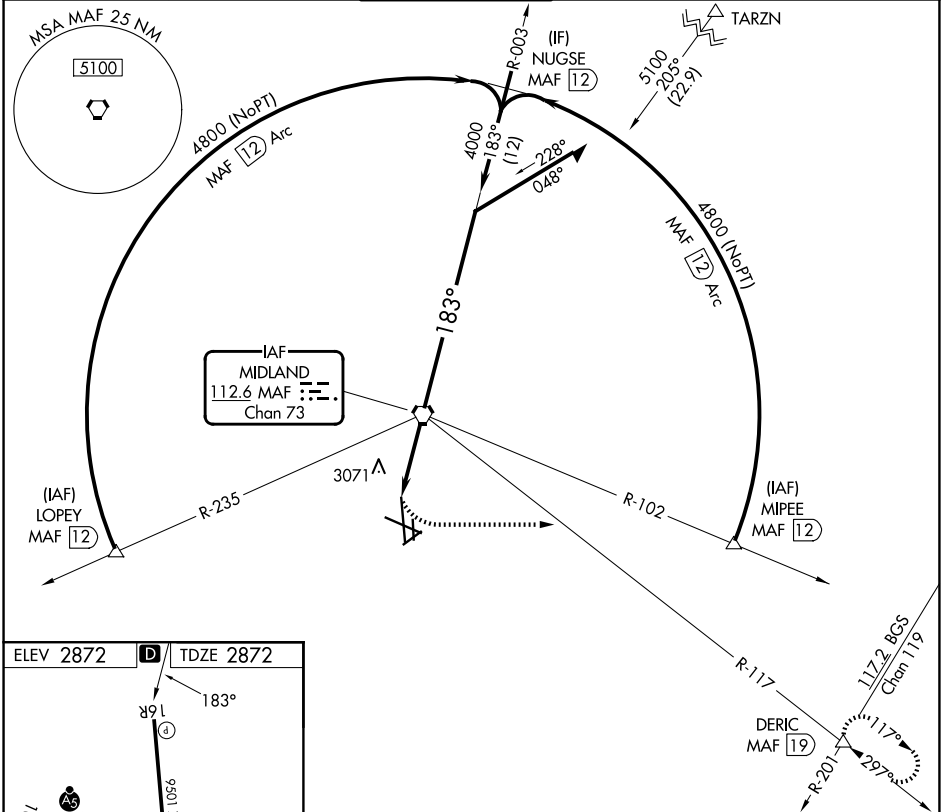
# VOR or TACAN RWY 16R

MIDLAND INTL AIR AND SPACE PORT (MAF)

**⚠** Rwy 16R helicopter visibility reduction below 3/4 SM NA. Circling Rwy 16L NA at night.

MISSED APPROACH: Climbing left turn to 4800 on heading 090° and on MAF VORTAC R-117 to DERIC INT/MAF 19 DME and hold.

ATIS <b>126.8 235.975</b>	MIDLAND APP CON* <b>124.6 290.4</b>	MIDLAND TOWER* <b>118.7 (CTAF) 273.45</b>	GND CON <b>121.9 348.6</b>	UNICOM <b>122.95</b>
------------------------------	--	--	-------------------------------	-------------------------



4800	MAF R-117	DERIC	VGSi and descent angles not coincident (VGSi Angle 3.00/TCH 50)		MAF VORTAC	Remain within 10 NM
hdg 090°						
	MAF 3.1	MAF 1.6	MAF 1.6	MAF 1.6	MAF 1.6	MAF 1.6
	1.5 NM	1.6 NM	1.6 NM	1.6 NM	1.6 NM	1.6 NM
CATEGORY	A	B	C	D	E	
S-16R	3400-1	528 (600-1)	3400-1½	528 (600-1½)		
CIRCLING	3440-1	568 (600-1)	3440-1½	3520-2	3600-2½	728 (800-2½)

SC-3, 16 APR 2026 to 14 MAY 2026

SC-3, 16 APR 2026 to 14 MAY 2026