

| | | | |
|--|------------------------|-----------------------------|---|
| WAAS CH 77924 W22A | APP CRS 223° | Rwy Ldg TDZE Apt Elev | 5764 2630 2634 |
|--|------------------------|-----------------------------|---|

RNAV (GPS) RWY 22

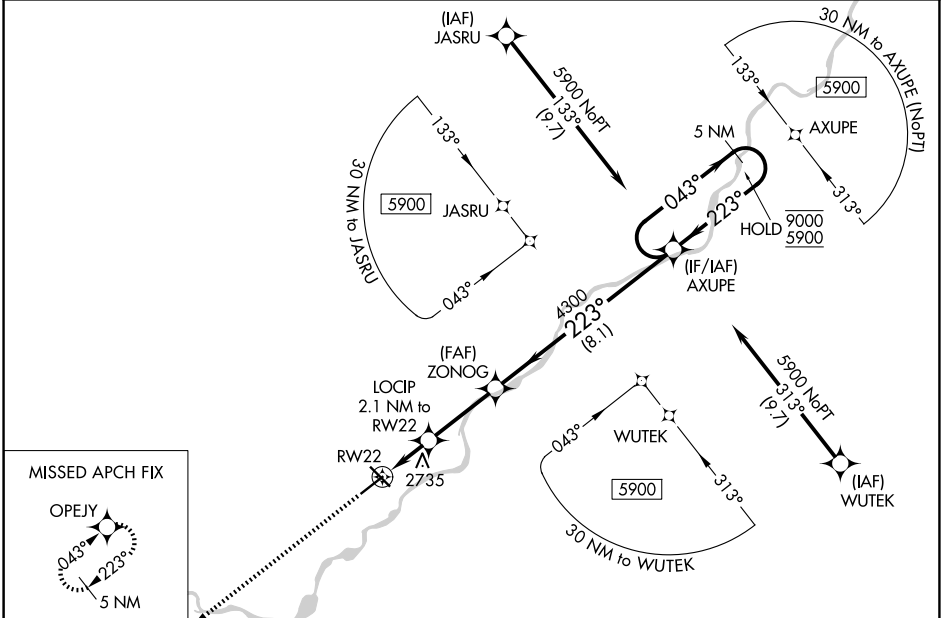
FRANK WILEY FLD (MLS)

RNP APCH-GPS.

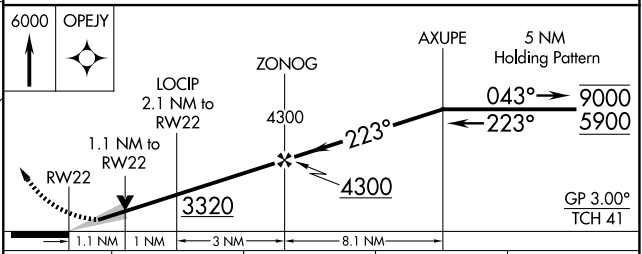
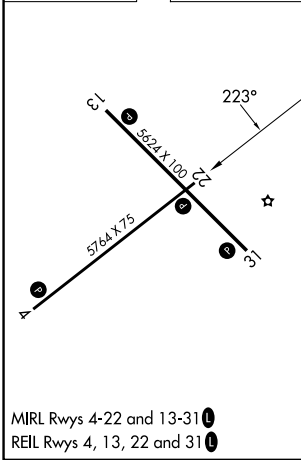
▼ Baro-VNAV and VDP NA when using Glendive altimeter setting. For uncompensated Baro-VNAV systems, LNAV/VNAV NA below -25°C or above 54°C. When local altimeter setting not received, use Glendive altimeter setting: increase LPV and LNAV/VNAV DA to 3047 and all visibilities ½ SM. Increase all MDA 180 feet and LNAV Cat C and D visibilities ¾ SM and Circling Cat C and D visibilities ½ SM.

MISSED APPROACH: Climb to 6000 direct OPEJY and hold, continue climb-in-hold to 6000.

| | | |
|------------------------|---|---------------------------------|
| ASOS 135.575 | SALT LAKE CENTER 126.85 305.2 | UNICOM 123.0 (CTAF) 0 |
|------------------------|---|---------------------------------|



| | | |
|-----------|----------|-----------|
| ELEV 2634 | D | TDZE 2630 |
|-----------|----------|-----------|



| CATEGORY | A | B | C | D |
|--------------|-----------------------|-----------------------|-------------------------|-------------------------|
| LPV DA | | 2880-1 | 250 (300-1) | |
| LNAV/VNAV DA | | 2880-1 | 250 (300-1) | |
| LNAV MDA | | 3000-1 | 370 (400-1) | |
| CIRCLING | 3060-1 426 (500-1) | 3100-1 466 (500-1) | 3160-1½ 526 (600-1½) | 3320-2¼ 686 (700-2¼) |

NW-1, 16 APR 2026 to 14 MAY 2026

NW-1, 16 APR 2026 to 14 MAY 2026