

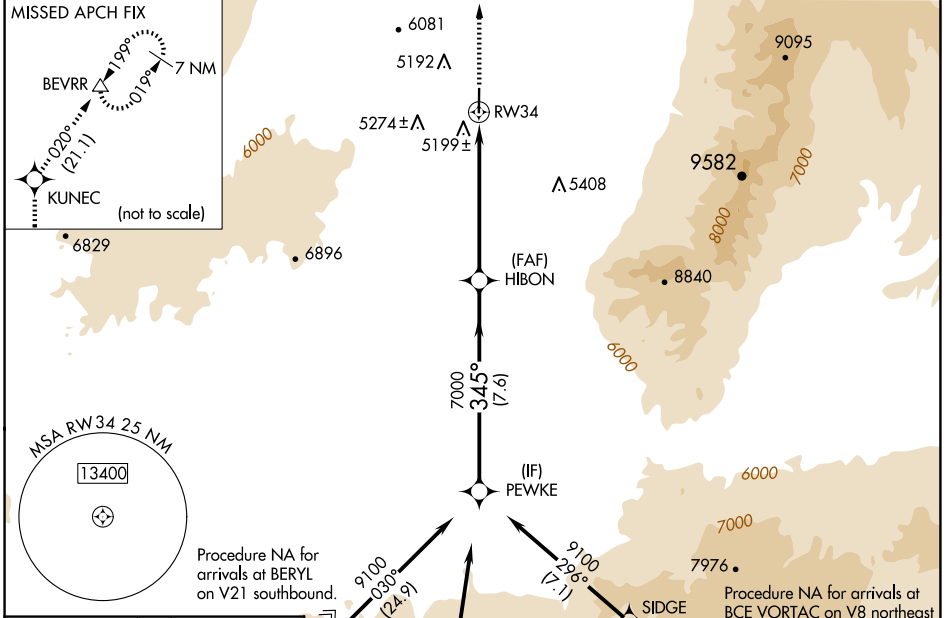
APP CRS	Rwy Ldg	<b>5004</b>
<b>345°</b>	TDZE	<b>5039</b>
	Apt Elev	<b>5039</b>

# RNAV (GPS) RWY 34

MILFORD MUNI/BEN AND JUDY BRISCOE FLD (MLF)

RNP APCH.	When local altimeter setting not received, use Cedar City altimeter setting and increase all MDA 180 feet; increase LNAV Cat C/D visibility ½ mile.	MISSED APPROACH: Climb to 11000 direct KUNEC and on track 020° to BEVRR and hold, continue climb-in-hold to 11000.
-----------	---	--

ASOS <b>135.025</b>	SALT LAKE CENTER <b>125.575 379.275</b>	UNICOM <b>122.8 (CTAF)</b>
------------------------	--	-------------------------------



ELEV 5039 TDZE 5039

MIRL Rwy 16-34  
REIL Rwy 16 and 34

91  
0.3% UP  
500 X 75  
34  
345°



11000	KUNEC	Ir 020°	BEVRR	PEWKE
				HIBON
				9100
				7000
				345°
				≤3.00° TCH 42
				6 NM
				7.6 NM
CATEGORY	A	B	C	D
LNAV MDA	5460-1	421 (500-1)	5460-1¼	421 (500-1¼)

SW-4, 16 APR 2026 to 14 MAY 2026

SW-4, 16 APR 2026 to 14 MAY 2026