

WAAS CH 53628 W29A	APP CRS 287°	Rwy Idg TDZE Apt Elev	4713 408 408
--	------------------------	-----------------------------	---

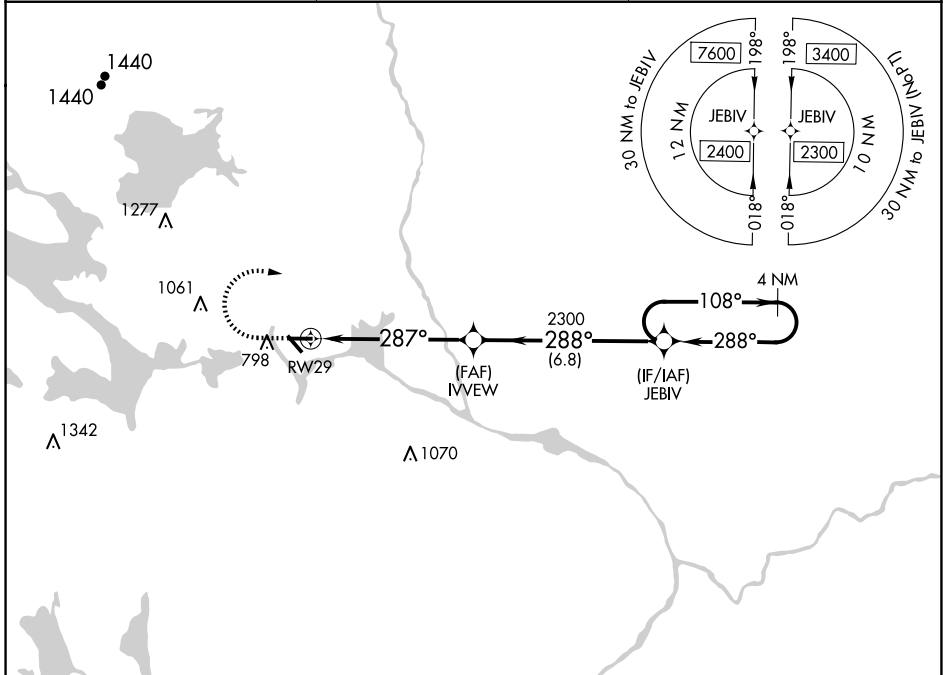
RNAV (GPS) RWY 29

MILLINOCKET MUNI (MLT)

⚠ Baro-VNAV NA when using Houlton altimeter setting. For uncompensated Baro-VNAV systems, LNAV/VNAV NA below -15°C (5°F) or above 41°C (105°F). DME/DME RNP-0.3 NA. Helicopter visibility reduction below 3/4 SM NA. When local altimeter setting not received, use Houlton altimeter setting and increase LPV DA to 817 feet and all Cats visibility 3/8 SM; increase LNAV/VNAV DA to 935 feet and all Cats visibility 3/8 SM; increase all MDAs 120 feet and LNAV Cat C/D visibility 3/8 SM, and Circling Cat A/B visibility 1/4 SM and Cat C visibility 1/2 SM. Night landing: Rwy 11, 34 NA.

MISSED APPROACH: Climb to 920 then climbing right turn to 2300 direct JEBIV and hold.

ASOS 135.225	BOSTON CENTER 120.25 346.4	UNICOM 122.8 (CTAF)
------------------------	--------------------------------------	-------------------------------



NE-1, 16 APR 2026 to 14 MAY 2026

NE-1, 16 APR 2026 to 14 MAY 2026

ELEV 408	TDZE 408	920	2300	JEBIV
* LNAV only				
CATEGORY	A	B	C	D
LPV DA	697-1		289 (300-1)	
LNAV/VNAV DA	815-1 3/8		407 (500-1 3/8)	
LNAV MDA	920-1	512 (600-1)	920-1 1/2	512 (600-1 1/2)
CIRCLING	1100-1	692 (700-1)	1100-2 692 (700-2)	1380-3 972 (1000-3)