

VOR/DME MLT	APP CRS	Rwy Idg	<b>4713</b>
<b>117.9</b>	<b>319°</b>	TDZE	<b>408</b>
Chan <b>126</b>		Apt Elev	<b>408</b>

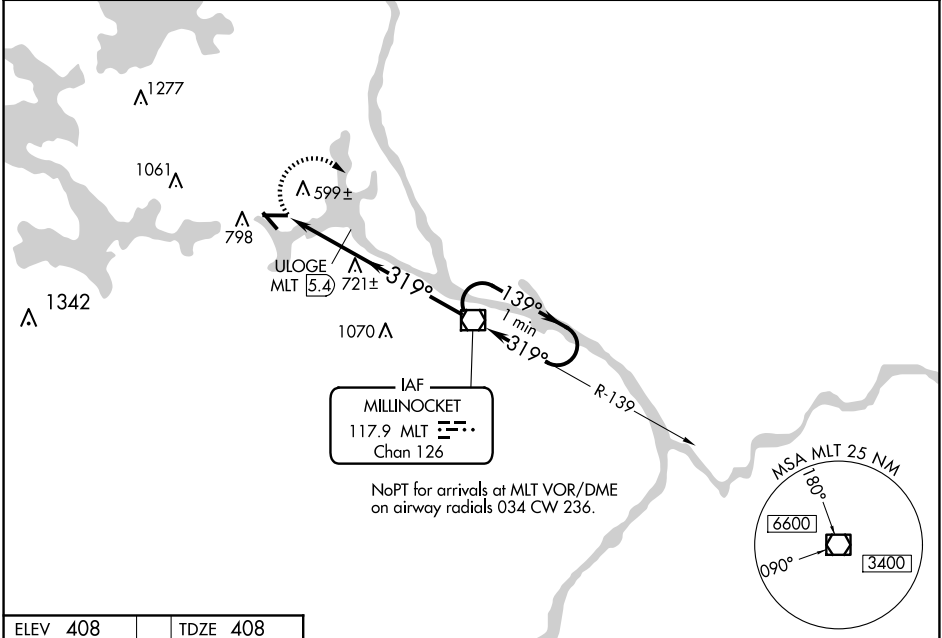
# VOR RWY 29

MILLINOCKET MUNI (MLT)

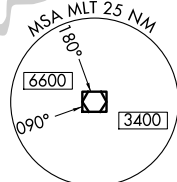
**⚠** Helicopter visibility reduction below 1 SM NA. When local altimeter setting not received, use Houlton altimeter setting and increase all MDA 120 feet, increase S-29 and Circling Cat A/B visibility ¼ SM, Cat C visibility ½ SM; increase S-29 Cat D visibility ½ SM; ULOGE fix minimums: increase S-29 Cat C/D and Circling Cat A/B visibility ¼ SM, and Circling Cat C visibility ½ SM. Procedure NA at night.

**MISSED APPROACH:** Climbing right turn to 3000 direct MLT VOR/DME and hold, continue climb-in-hold to 3000.

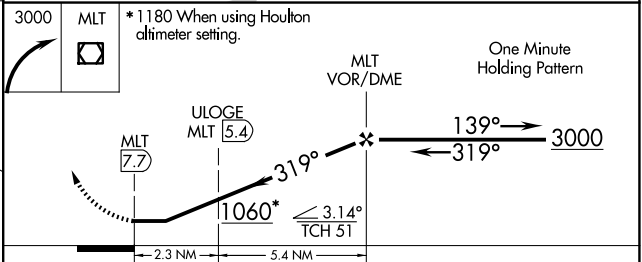
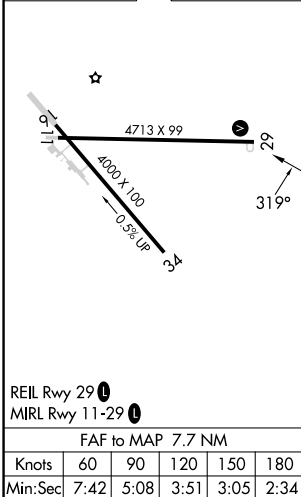
ASOS <b>135.225</b>	BOSTON CENTER <b>120.25 346.4</b>	UNICOM <b>122.8</b> (CTAF) <b>📞</b>
------------------------	--------------------------------------	--



NoPT for arrivals at MLT VOR/DME on airway radials 034 CW 236.



ELEV <b>408</b>	TDZE <b>408</b>
-----------------	-----------------



CATEGORY	A		B		C		D	
	S-29	1060-1	652 (700-1)	1060-1¾	652 (700-1¾)	1060-2	652 (700-2)	1060-2
CIRCLING	1100-1	692 (700-1)	1100-2	692 (700-2)	1380-3	972 (1000-3)	1380-3	972 (1000-3)
ULOGE FIX MINIMUMS								
S-29	880-1	472 (500-1)	880-1¼	472 (500-1¼)	880-1½	472 (500-1½)	880-1½	472 (500-1½)
CIRCLING	1100-1	692 (700-1)	1100-2	692 (700-2)	1380-3	972 (1000-3)	1380-3	972 (1000-3)

MILLINOCKET, MAINE  
Orig-C 09SEP21

45°39'N-68°41'W

# MILLINOCKET MUNI (MLT) VOR RWY 29

NE-1, 16 APR 2026 to 14 MAY 2026

NE-1, 16 APR 2026 to 14 MAY 2026