

LOC/DME I-BLY 110.3 Chan 40	APP CRS 191°	Rwy 19R Ldg 9205 TDZE 672 Apt Elev 728	Rwy 19L Ldg 4182 TDZE 674 Apt Elev 728
---	------------------------	---	---

ILS or LOC RWY 19R

GENERAL MITCHELL INTL (MKE)

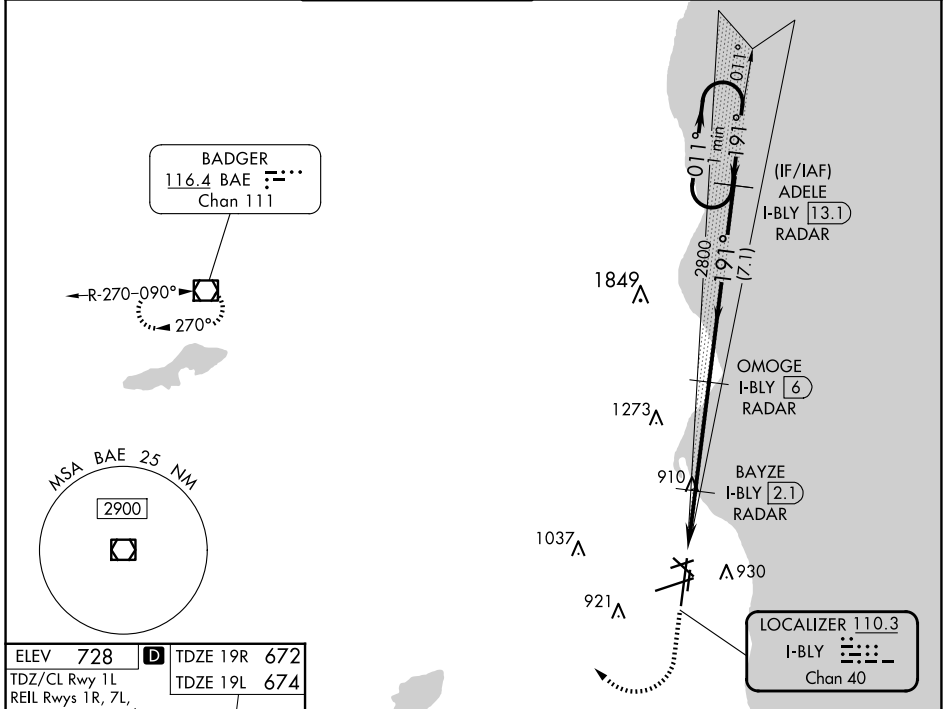
RADAR required for procedure entry, RADAR or DME required for LOC only.

▼ For inop ALS, increase S-LOC 19R Cats C and D visibility to 1 3/8 SM.
*RVR 1800 authorized with use of FD or AP or HUD to DA.

MALSR Rwy 19R

MISSED APPROACH: Climb to 2800 then right turn direct BAE VOR/DME and hold.

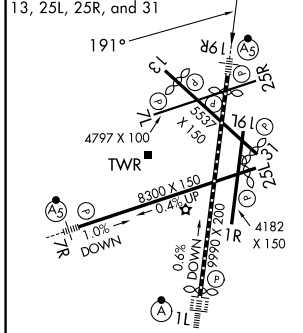
D-ATIS 126.4	MILWAUKEE APP CON 126.5 307.0	MILWAUKEE TOWER 124.575 269.05	GND CON 121.8 263.125	CLNC DEL 120.8	CPDLC
------------------------	---	--	---------------------------------	--------------------------	-------



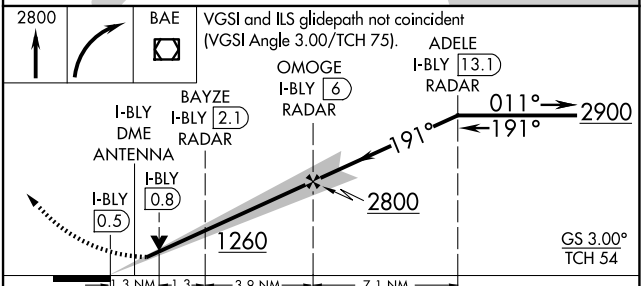
EC-3, 16 APR 2026 to 14 MAY 2026

EC-3, 16 APR 2026 to 14 MAY 2026

ELEV 728	TDZE 19R 672
TDZ/CL Rwy 1L	TDZE 19L 674
REIL Rwys 1R, 7L, 13, 25L, 25R, and 31	



HIRL Rwys 1L-19R and 7R-25L					
MIRL Rwys 1R-19L, 13-31, and 7L-25R					
FAF to MAP 6.5 NM					
Knots	60	90	120	150	180
Min:Sec	6:30	4:20	3:15	2:36	2:10



CATEGORY	A	B	C	D
S-ILS 19R*	872/24 200 (200-1/2)			
S-LOC 19R	1160/24	488 (500-1/2)	1160/50	488 (500-1)
SIDESTEP 19L	1160-1	486 (500-1)	1160-1/2 486 (500-1/2)	1160-2 486 (500-2)
<input checked="" type="checkbox"/> CIRCLING	1240-1	512 (600-1)	1240-1/2 512 (600-1/2)	1360-2 632 (700-2)