

LOC/DME I-PXY 111.5 Chan 52	APP CRS 256°	Rwy Ldg 7867 TDZE 683 Apt Elev 729
---	------------------------	---

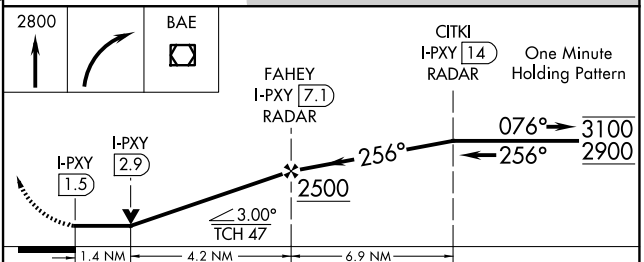
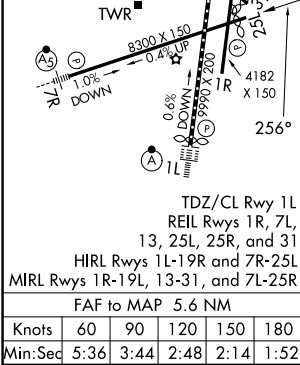
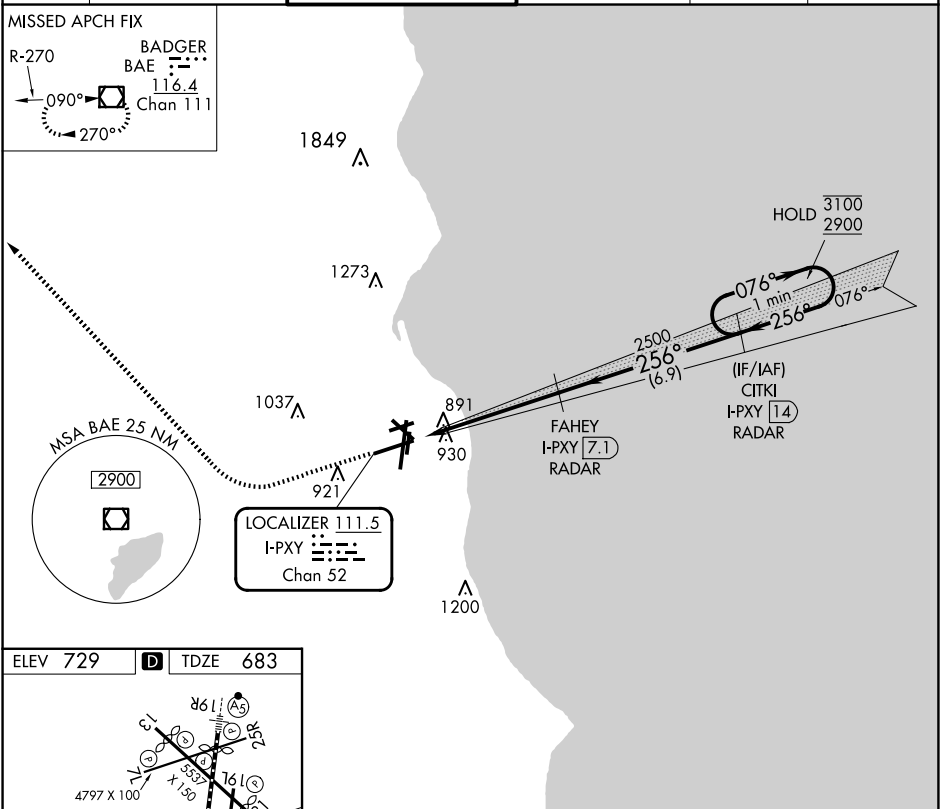
LOC RWY 25L

GENERAL MITCHELL INTL (MKE)

RADAR required for procedure entry. DME or RADAR required.
 ▼ Rwy 25L helicopter visibility reduction below 3/4 SM NA.

MISSED APPROACH: Climb to 2800 then right turn direct BAE VOR/DME and hold.

D-ATIS 126.4	MILWAUKEE APP CON 126.5 307.0	MILWAUKEE TOWER 124.575 269.05	GND CON 121.8 263.125	CLNC DEL 120.8	CPDLC
------------------------	---	--	---------------------------------	--------------------------	-------



CATEGORY	A	B	C	D
S-LOC 25L	1160-1 477 (500-1)		1160-1 3/8 477 (500-1 3/8)	
<input checked="" type="checkbox"/> CIRCLING	1240-1 511 (600-1)		1240-1 1/2 511 (600-1 1/2)	1360-2 631 (700-2)

EC-3, 16 APR 2026 to 14 MAY 2026

EC-3, 16 APR 2026 to 14 MAY 2026