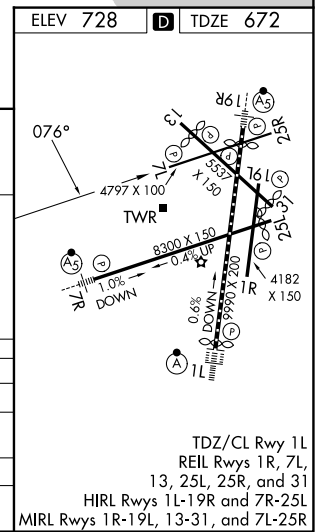
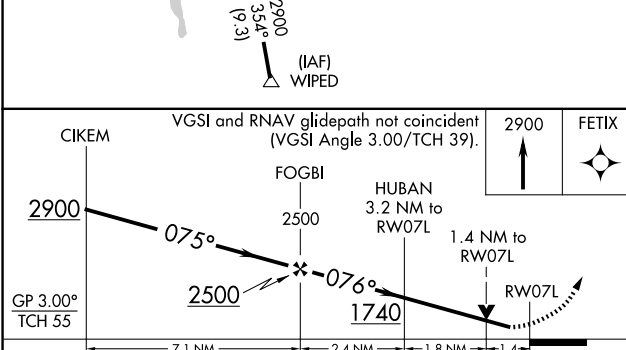
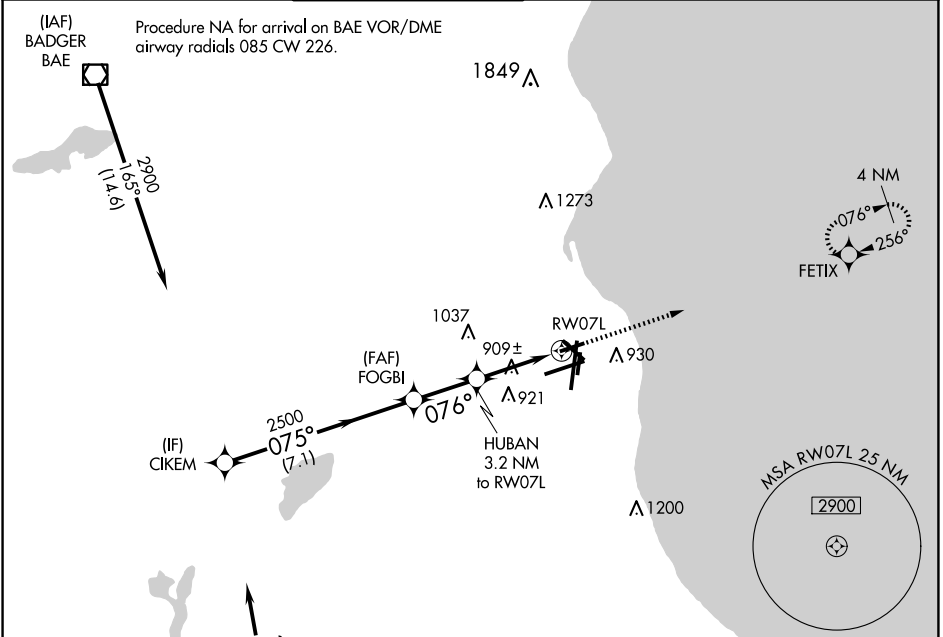


WAAS CH <b>42542</b> W07B	APP CRS <b>076°</b>	Rwy Ldg TDZE <b>672</b> Apt Elev <b>728</b>
---------------------------------	------------------------	---

# RNAV (GPS) RWY 7L

GENERAL MITCHELL INTL (MKE)

RNP APCH - GPS.			MISSED APPROACH: Climb to 2900 direct to FETIX and hold.		
<p><b>▼</b> Rwy 7L helicopter visibility reduction below <math>\frac{3}{4}</math> SM NA. For uncompensated Baro-VNAV systems, LNAV/VNAV NA below -1°C or above 54°C.</p>					
D-ATIS <b>126.4</b>	MILWAUKEE APP CON <b>126.5 307.0</b>	MILWAUKEE TOWER <b>124.575 269.05</b>	GND CON <b>121.8 263.125</b>	CLNC DEL <b>120.8</b>	CPDLC



CATEGORY	A	B	C	D
LPV DA	922-1		250 (200-1)	
LNAV/VNAV DA	1118-1 $\frac{3}{8}$		446 (400-1 $\frac{3}{8}$ )	
LNAV MDA	1160-1	488 (500-1)	1160-1 $\frac{3}{8}$	488 (500-1 $\frac{3}{8}$ )
<b>C</b> CIRCLING	1240-1	512 (600-1)	1240-1 $\frac{1}{2}$ 512 (600-1 $\frac{1}{2}$ )	1360-2 632 (700-2)

EC-3, 16 APR 2026 to 14 MAY 2026

EC-3, 16 APR 2026 to 14 MAY 2026