

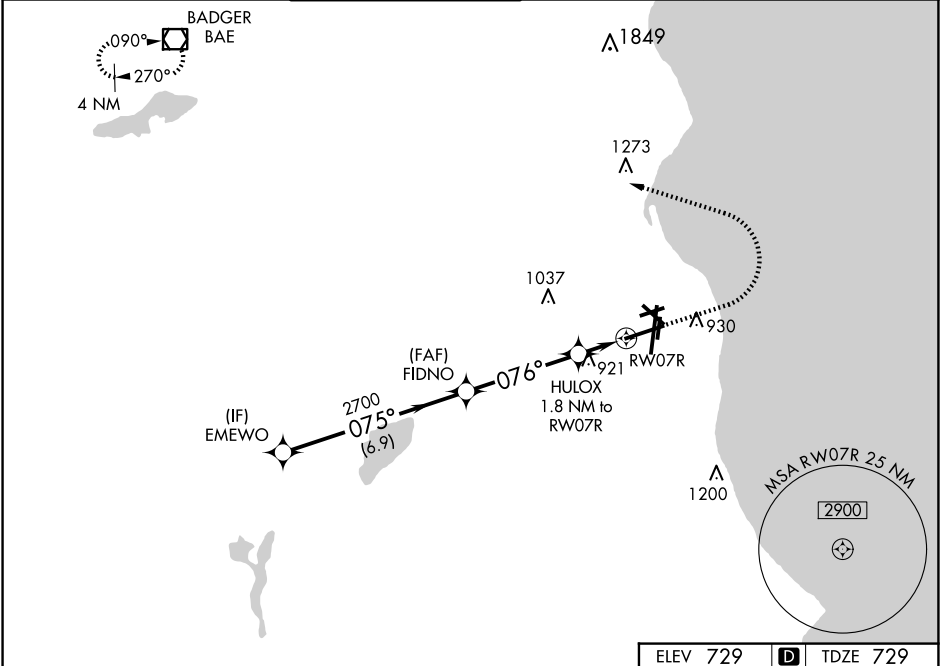
WAAS CH 69226 W07A	APP CRS 076°	Rwy Ldg TDZE Apt Elev	8012 729 729
--	------------------------	-----------------------------	---

RNAV (GPS) Z RWY 7R

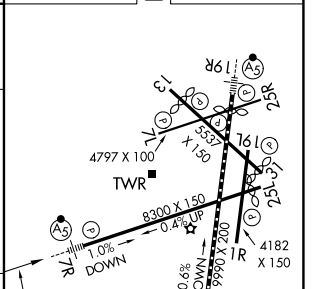
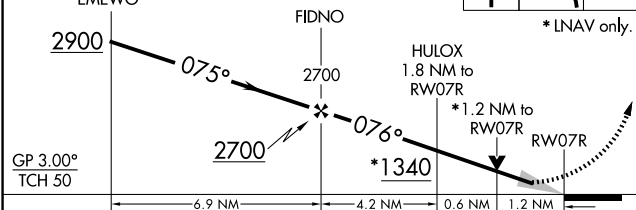
GENERAL MITCHELL INTL (MKE)

<p>For uncompensated Baro-VNAV systems, LNAV/VNAV NA below -20°C (-4°F) or above 54°C (130°F). DME/DME RNP-0.3 NA. # RVR 1800 authorized with use of FD or AP or HUD to DA.</p>		<p>MISSED APPROACH: Climb to 2900 then climbing left turn to 3000 direct BAE VOR/DME and hold.</p>
	<p>For uncompensated Baro-VNAV systems, LNAV/VNAV NA below -20°C (-4°F) or above 54°C (130°F). DME/DME RNP-0.3 NA. # RVR 1800 authorized with use of FD or AP or HUD to DA.</p>	

D-ATIS 126.4	MILWAUKEE APP CON 126.5 307.0	MILWAUKEE TOWER 124.575 269.05	GND CON 121.8 263.125	CLNC DEL 120.8	CPDLC
------------------------	---	--	---------------------------------	--------------------------	-------



<p>VGSI and RNAV glidepath not coincident (VGSI Angle 3.00/TCH 63).</p>				<p>2900</p>	<p>3000</p>	<p>BAE</p>
				<p>* LNAV only.</p>		



CATEGORY	A	B	C	D
LPV DA #	929/24 200 (200-½)			
LNAV/VNAV DA	1232-1¼ 503 (600-1¼)			
LNAV MDA	1180/24	451 (500-½)	1180/45	451 (500-¾)
CIRCLING	1240-1	511 (600-1)	1240-1½ 511 (600-1½)	1360-2 631 (700-2)

TDZ/CL Rwy 1L
REIL Rwy 1R, 7L, 13, 25R, 25L and 31
HIRL Rwy 1L-19R and 7R-25L
MIRL Rwy 1R-19L, 13-31 and 7L-25R

EC-3, 16 APR 2026 to 14 MAY 2026

EC-3, 16 APR 2026 to 14 MAY 2026