

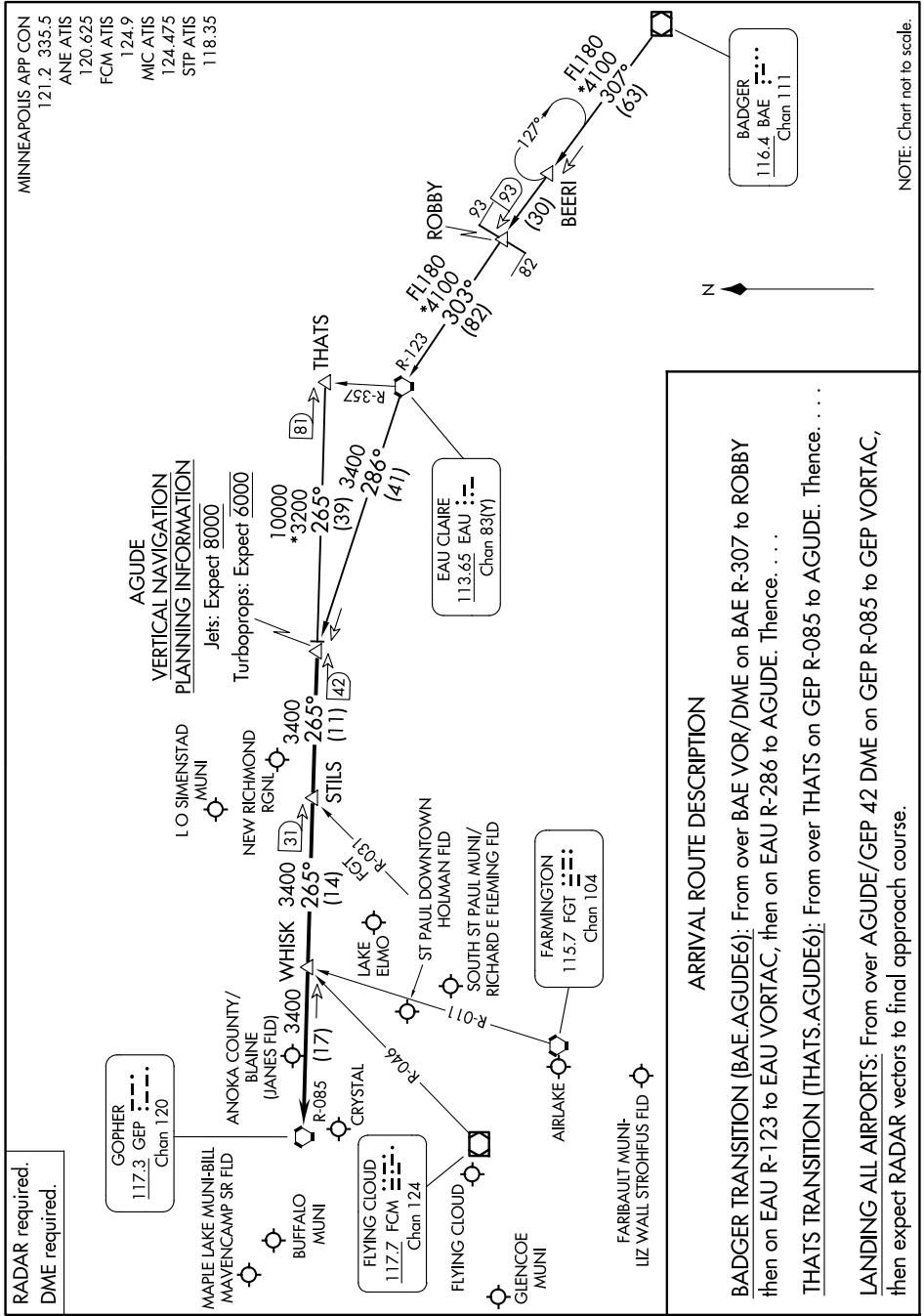
AGUDE SIX ARRIVAL

AL-263 (FAA)

MINNEAPOLIS-ST PAUL, MINNESOTA

MINNEAPOLIS APP CON
 121.2 335.5
 ANE ATIS
 120.625
 FCM ATIS
 124.9
 MIC ATIS
 124.475
 STP ATIS
 118.35

NC-1, 16 APR 2026 to 14 MAY 2026



ARRIVAL ROUTE DESCRIPTION

BADGER TRANSITION [BAE.AGUDE6]: From over BAE VOR/DME on BAE R-307 to ROBBERY then on EAU R-123 to EAU VORTAC, then on EAU R-286 to AGUDE. Thence. . . .

THATS TRANSITION [THATS.AGUDE6]: From over THATS on GEP R-085 to AGUDE. Thence. . . .

LANDING ALL AIRPORTS: From over AGUDE/GEP 42 DME on GEP R-085 to GEP VORTAC, then expect RADAR vectors to final approach course.

AGUDE SIX ARRIVAL

MINNEAPOLIS-ST PAUL, MINNESOTA

NC-1, 16 APR 2026 to 14 MAY 2026