

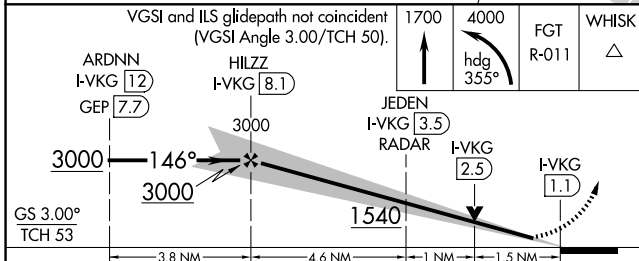
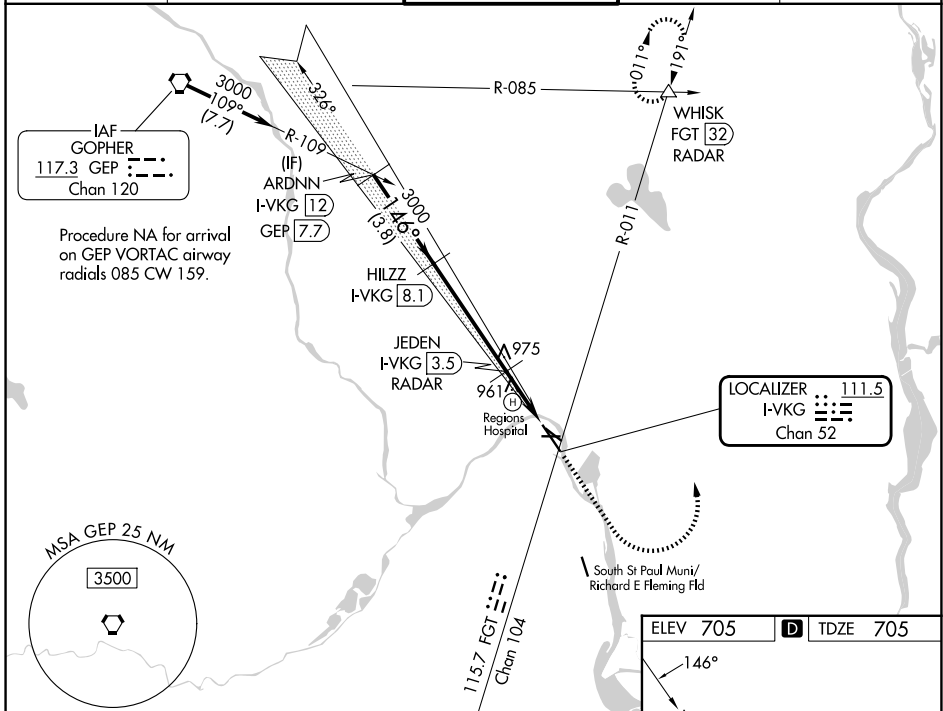
LOC/DME I-VKG 111.5 Chan 52	APP CRS 146°	Rwy Ldg 6148 TDZE 705 Apt Elev 705
---	------------------------	---

ILS or LOC RWY 14

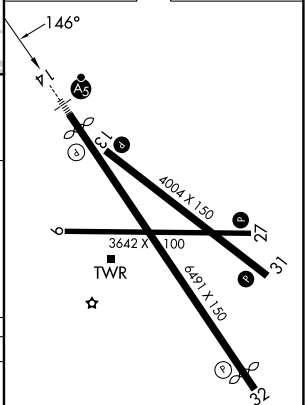
ST PAUL DOWNTOWN HOLMAN FLD (STP)

DME required.		MALS R AS	MISSED APPROACH: Climb to 1700 then climbing left turn to 4000 on heading 355° and on FGT VORTAC R-011 to WHISK INT/ FGT 32 DME/RADAR and hold.
Rwy 14 helicopter visibility reduction below RVR 4000 NA. Inop table does not apply to S-ILS 14. For inop ALS, increase S-LOC 14 Cat A/B visibility to RVR 5500 and Cat C/D visibility to 1 3/8 SM. -30°C			

ATIS 118.35	MINNEAPOLIS APP CON 121.2 335.65	ST. PAUL TOWER ★ 119.1(CTAF) 257.8	GND CON 121.675	UNICOM 122.95
-----------------------	--	--	---------------------------	-------------------------



ELEV 705	D TDZE 705
----------	-------------------



CATEGORY	A	B	C	D
S-ILS 14	955/40 250 (300-3/4)			
S-LOC 14	1220/40	515 (600-3/4)	1220/55	515 (600-1)
CIRCLING	1580-1 1/4	875 (900-1 1/4)	1580-2 1/2	1600-3
			875 (900-2 1/2)	895 (900-3)

MIRL Rwy 9-27
 REIL Rwy 31
 REIL Rwy 32
 HIRL Rwys 14-32 and 13-31

NC-1, 16 APR 2026 to 14 MAY 2026

NC-1, 16 APR 2026 to 14 MAY 2026