

LOC/DME I-BAO <b>111.5</b> Chan 52	APP CRS <b>326°</b>	Rwy Ldg TDZE <b>704</b> Apt Elev <b>705</b>	<b>6109</b> <b>704</b> <b>705</b>
--	------------------------	---	---

# ILS or LOC RWY 32

ST PAUL DOWNTOWN HOLMAN FLD (STP)

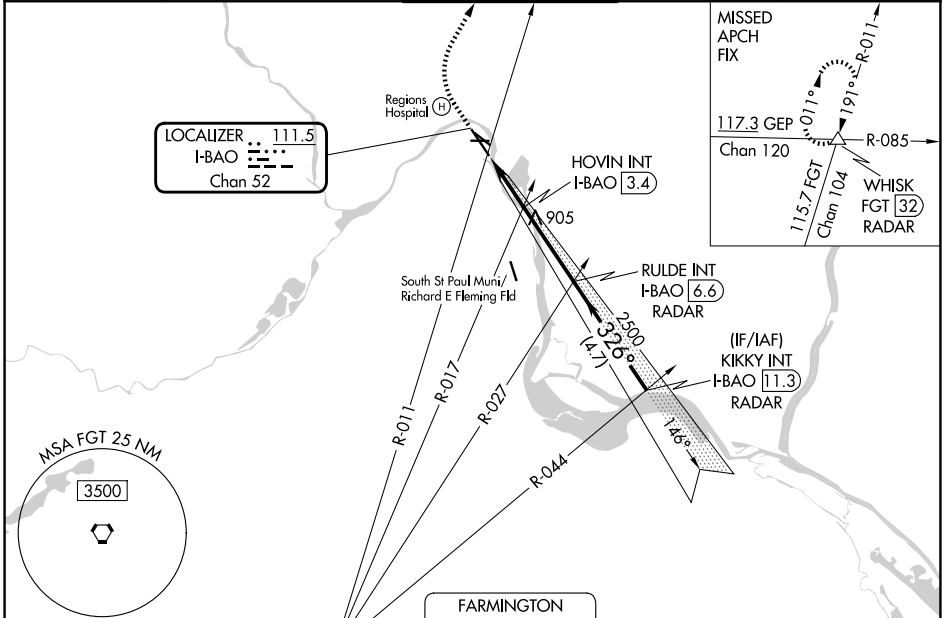
DME or RADAR required. RADAR required for procedure entry.

MISSED APPROACH: Climb to 1400 then climbing right turn to 4000 on heading 030° and on FGT VORTAC R-011 to WHISK INT/FGT 32 DME/RADAR and hold, continue climb-in-hold to 4000.

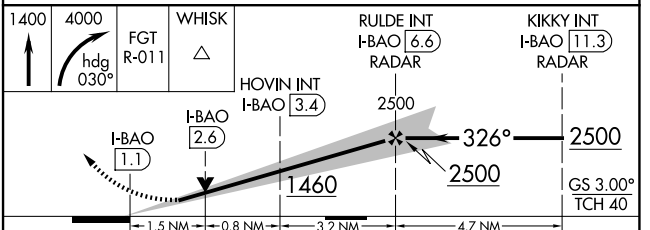
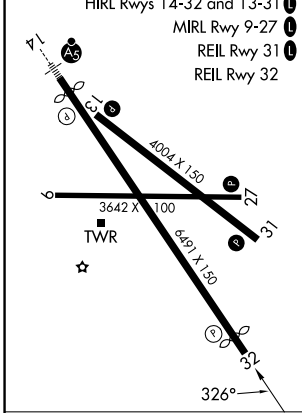
Rwy 32 helicopter visibility reduction below RVR 4000 NA.

-30°C

ATIS <b>118.35</b>	MINNEAPOLIS APP CON <b>121.2 335.65</b>	ST. PAUL TOWER ★ <b>119.1 (CTAF) 0 257.8</b>	GND CON <b>121.675</b>	UNICOM <b>122.95</b>
-----------------------	--	---	---------------------------	-------------------------



ELEV <b>705</b>	<b>D</b>	TDZE <b>704</b>
-----------------	----------	-----------------



CATEGORY	A	B	C	D
S-ILS 32	1030/50 326 (400-1)			
S-LOC 32	1460/55 756 (800-1)	1460-1¼ 756 (800-1¼)	1460-2 875 (900-2½)	756 (800-2)
CIRCLING	1580-1¼	875 (900-1¼)	1580-2½	1600-3 895 (900-3)
HOVIN FIX MINIMUMS				
S-LOC 32	1220/55	516 (600-1)	1220-1⅓	516 (600-1⅓)
CIRCLING	1580-1¼	875 (900-1¼)	1580-2½	1600-3 895 (900-3)

FAF to MAP 5.5 NM					
Knots	60	90	120	150	180
Min:Sec	5:30	3:40	2:45	2:12	1:50

NC-1, 16 APR 2026 to 14 MAY 2026

NC-1, 16 APR 2026 to 14 MAY 2026