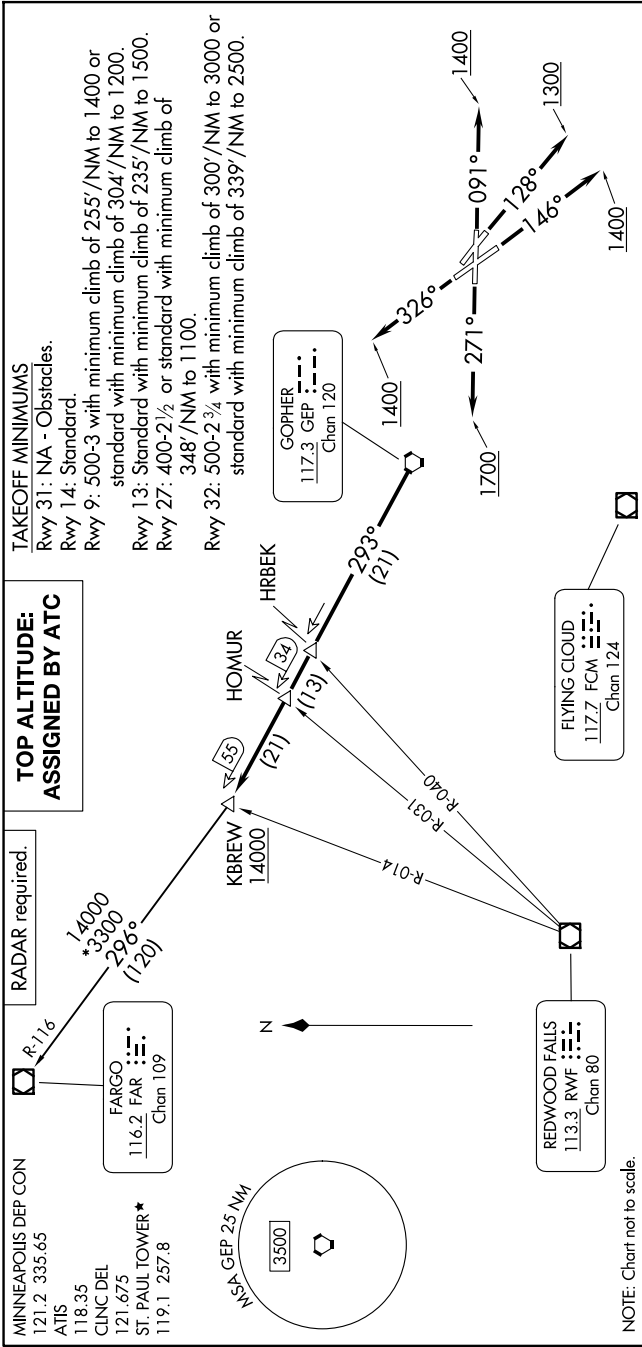


# KBREW TWO DEPARTURE

NC-1, 16 APR 2026 to 14 MAY 2026



# KBREW TWO DEPARTURE

## TOP ALTITUDE: ASSIGNED BY ATC

- TAKEOFF MINIMUMS**  
Rwy 31: NA - Obstacles.  
Rwy 14: Standard.  
Rwy 9: 500-3 with minimum climb of 255'/NM to 1400 or standard with minimum climb of 304'/NM to 1200.  
Rwy 13: Standard with minimum climb of 235'/NM to 1500.  
Rwy 27: 400-2½ or standard with minimum climb of 348'/NM to 1100.  
Rwy 32: 500-2¾ with minimum climb of 300'/NM to 3000 or standard with minimum climb of 339'/NM to 2500.

## DEPARTURE ROUTE DESCRIPTION

**TAKEOFF RUNWAY 9:** Climb on heading 091° to 1400 for RADAR vectors to GEP VORTAC then on depicted route to KBREW, thence. . . .

**TAKEOFF RUNWAY 13:** Climb on heading 128° to 1300 for RADAR vectors to GEP VORTAC then on depicted route to KBREW, thence. . . .

**TAKEOFF RUNWAY 14:** Climb on heading 146° to 1400 for RADAR vectors to GEP VORTAC then on depicted route to KBREW, thence. . . .

**TAKEOFF RUNWAY 27:** Climb on heading 271° to 1700 for RADAR vectors to GEP VORTAC then on depicted route to KBREW, thence. . . .

**TAKEOFF RUNWAY 32:** Climb on heading 326° to 1400 for RADAR vectors to GEP VORTAC then on depicted route to KBREW, thence. . . .

. . . on transition. Maintain ATC assigned altitude. Expect filed altitude 10 minutes after departure.

**FARGO TRANSITION (KBREW2.FAR):** From over KBREW on FAR R-116 to FAR VOR/DME.

NOTE: Chart not to scale.

NC-1, 16 APR 2026 to 14 MAY 2026