

WAAS CH <b>50123</b> <b>W32A</b>	APP CRS <b>326°</b>	Rwy Ldg TDZE Apt Elev	<b>6109</b> <b>704</b> <b>705</b>
----------------------------------------	------------------------	-----------------------------	-----------------------------------------

# RNAV (GPS) RWY 32

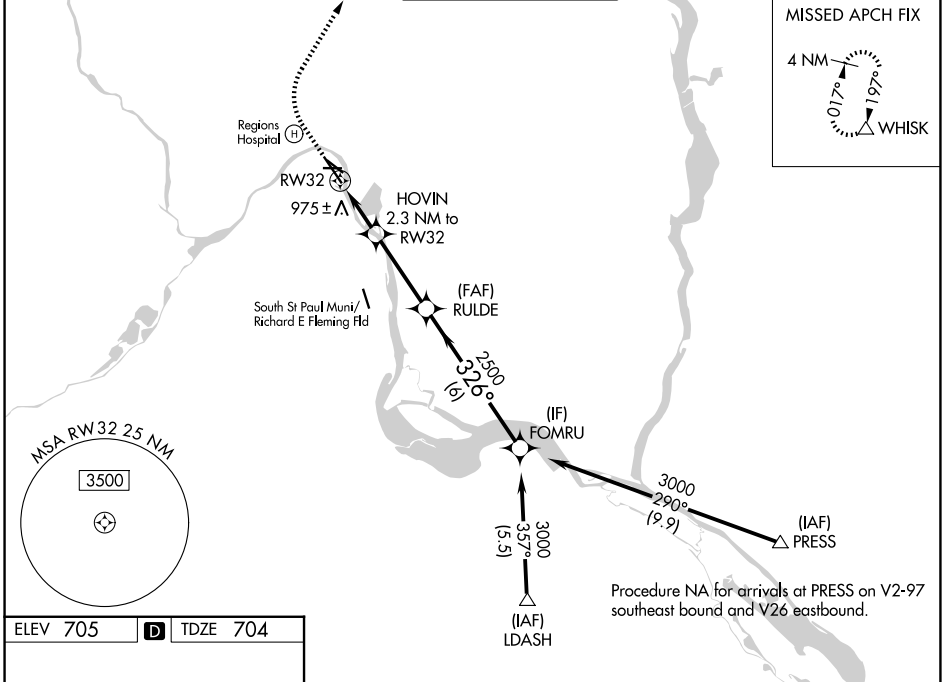
ST PAUL DOWNTOWN HOLMAN FLD (STP)

RNP APCH - GPS.

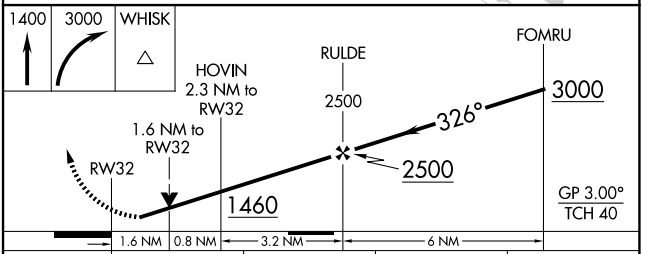
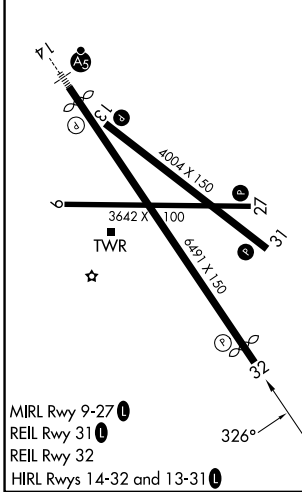
**⚠** Rwy 32 helicopter visibility reduction below RVR 4000 NA.  
**⚠** For uncompensated Baro-VNAV systems, LNAV/VNAV NA below -30°C  
 For uncompensated Baro-VNAV systems, LNAV/VNAV NA below -21°C or above 54°C.

MISSED APPROACH: Climb to 1400 then climbing right turn to 3000 direct WHISK and hold.

ATIS <b>118.35</b>	MINNEAPOLIS APP CON <b>121.2 335.65</b>	ST. PAUL TOWER ★ <b>119.1(CTAF) 257.8</b>	GND CON <b>121.675</b>	UNICOM <b>122.95</b>
-----------------------	--------------------------------------------	----------------------------------------------	---------------------------	-------------------------



ELEV 705	<b>D</b>	TDZE 704
----------	----------	----------



CATEGORY	A	B	C	D
LPV DA	1031/50 327 (400-1)			
LNAV/VNAV DA	1240-1½ 536 (600-1½)			
LNAV MDA	1240/55	536 (600-1)	1240-1½	536 (600-1½)
CIRCLING	1580-1¼	875 (900-1¼)	1580-2½ 875 (900-2½)	1600-3 895 (900-3)

NC-1, 16 APR 2026 to 14 MAY 2026

NC-1, 16 APR 2026 to 14 MAY 2026