

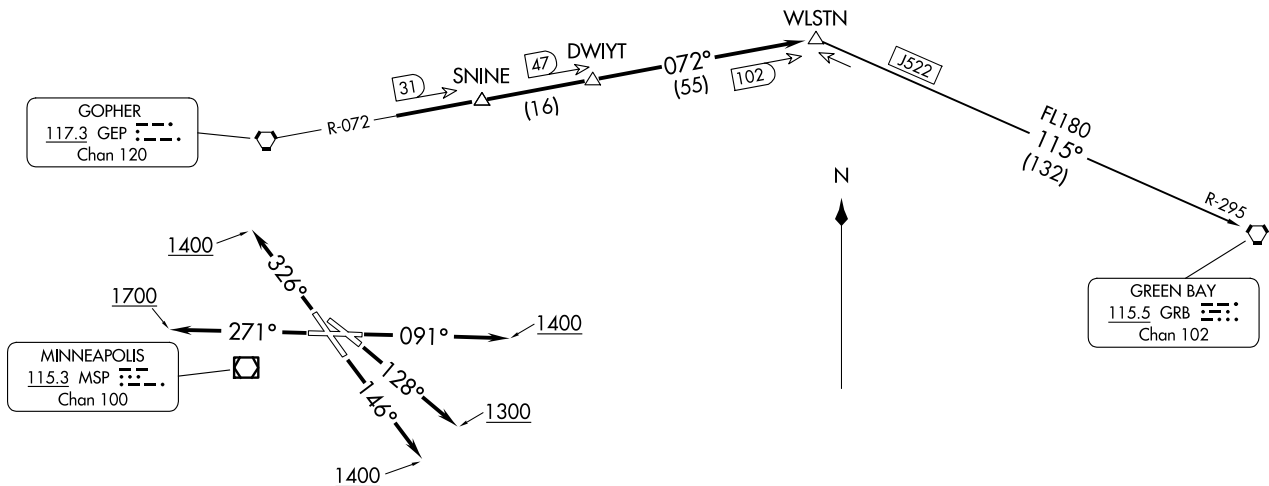
**TOP ALTITUDE:  
(JETS) 7000/  
(PROPS) 5000**

MINNEAPOLIS DEP CON  
121.2 335.65  
ATIS  
118.35  
CLNC DEL  
121.675  
ST. PAUL TOWER★  
119.1 257.8

GOPHER  
117.3 GEP  
Chan 120

MINNEAPOLIS  
115.3 MSP  
Chan 100

GREEN BAY  
115.5 GRB  
Chan 102



(CONTINUED ON FOLLOWING PAGE)

WLSTN SEVEN DEPARTURE  
(WLSTN) 17AUG17

ST. PAUL, MINNESOTA  
ST. PAUL DOWNTOWN HOLMAN FLD (STP)

(WLSTN) 23334  
WLSTN SEVEN DEPARTURE

ST. PAUL DOWNTOWN HOLMAN FLD (STP)  
AL-263 (FAA)  
ST. PAUL, MINNESOTA



DEPARTURE ROUTE DESCRIPTION

TAKEOFF RUNWAY 9: Climb heading 091° to 1400 for RADAR vectors to GEP R-072 to WLSTN/GEP 102 DME, thence . . . .

TAKEOFF RUNWAY 13: Climb heading 128° to 1300 for RADAR vectors to GEP R-072 to WLSTN/GEP 102 DME, thence . . . .

TAKEOFF RUNWAY 14: Climb heading 146° to 1400 for RADAR vectors to GEP R-072 to WLSTN/GEP 102 DME, thence . . . .

TAKEOFF RUNWAY 27: Climb heading 271° to 1700 for RADAR vectors to GEP R-072 to WLSTN/GEP 102 DME, thence . . . .

TAKEOFF RUNWAY 32: Climb heading 326° to 1400 for RADAR vectors to GEP R-072 to WLSTN/GEP 102 DME, thence . . . .

. . . .on assigned transition or assigned route. Expect clearance to filed altitude/flight level 10 (ten) minutes after departure.

GREEN BAY TRANSITION (WLSTN7.GRB): From over WLSTN on GRB R-295 to GRB VORTAC.

NC-1, 16 APR 2026 to 14 MAY 2026

NC-1, 16 APR 2026 to 14 MAY 2026