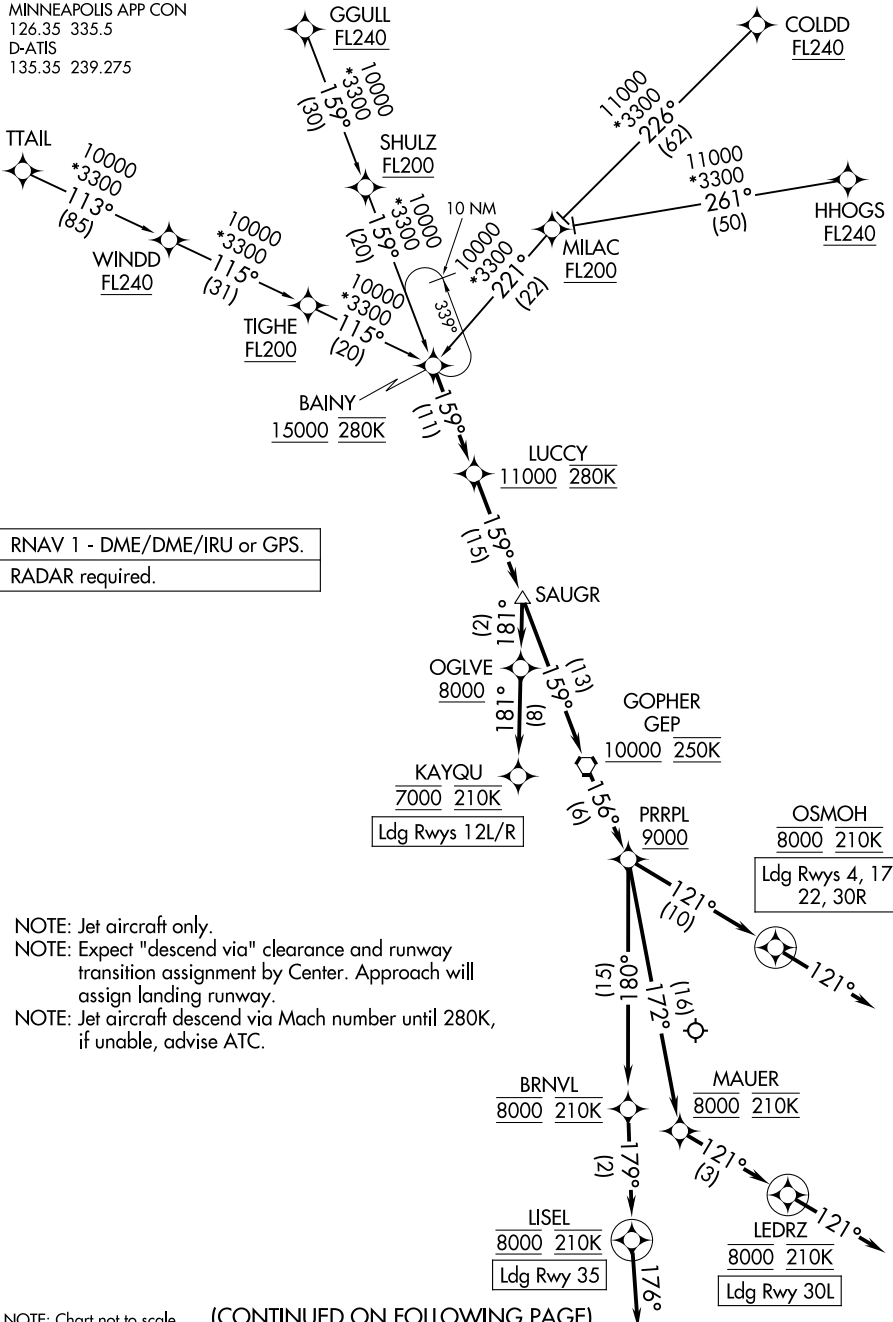


(BAINY.BAINY4) 26078

BAINY FOUR ARRIVAL (RNAV)

MINNEAPOLIS-ST PAUL INTL/WOLD-CHAMBERLAIN (MSP)
AL-264 (FAA) MINNEAPOLIS, MINNESOTA

MINNEAPOLIS APP CON
126.35 335.5
D-ATIS
135.35 239.275



NOTE: Chart not to scale. (CONTINUED ON FOLLOWING PAGE)

BAINY FOUR ARRIVAL (RNAV)

MINNEAPOLIS, MINNESOTA
MINNEAPOLIS-ST PAUL INTL/WOLD-CHAMBERLAIN (MSP)

(BAINY.BAINY4) 19MAR26

NC-1, 16 APR 2026 to 14 MAY 2026

NC-1, 16 APR 2026 to 14 MAY 2026

ARRIVAL ROUTE DESCRIPTION

COLDD TRANSITION (COLDD.BAINY4)

GGULL TRANSITION (GGULL.BAINY4)

HHOGS TRANSITION (HHOGS.BAINY4)

MILAC TRANSITION (MILAC.BAINY4)

SHULZ TRANSITION (SHULZ.BAINY4)

TIGHE TRANSITION (TIGHE.BAINY4)

TTAIL TRANSITION (TTAIL.BAINY4)

WINDD TRANSITION (WINDD.BAINY4)

From BAINY on track 159° to cross LUCCY at or above 11000 and at 280K, then on track 159° to SAUGR.

LANDING RUNWAYS 4, 17, 22, 30R: From SAUGR on track 159° to cross GEP VORTAC at or above 10000 and at 250K, then on track 156° to cross PRRPL at or above 9000, then on track 121° to cross OSMOH at 8000 and at 210K, then on track 121°. Expect RADAR vectors to final approach course.

LANDING RUNWAYS 12L/R: From SAUGR on track 181° to cross OGLVE at or above 8000, then on track 181° to cross KAYQU at 7000 and at 210K. Expect RNAV (RNP), RNAV (GPS), or ILS Rwy 12L approach or RADAR vectors to Rwy 12L/R final approach course.

LANDING RUNWAY 30L: From SAUGR on track 159° to cross GEP VORTAC at or above 10000 and at 250K, then on track 156° to cross PRRPL at or above 9000, then on track 172° to cross MAUER at 8000 and at 210K, then on track 121° to cross LEDRZ at 8000 and at 210K, then on track 121°. Expect RADAR vectors to final approach course.

LANDING RUNWAY 35: From SAUGR on track 159° to cross GEP VORTAC at or above 10000 and at 250K, then on track 156° to cross PRRPL at or above 9000, then on track 180° to cross BRNVL at 8000 and at 210K, then on track 179° to cross LISEL at 8000 and at 210K, then on track 176°. Expect RADAR vectors to final approach course.

NC-1, 16 APR 2026 to 14 MAY 2026

NC-1, 16 APR 2026 to 14 MAY 2026