

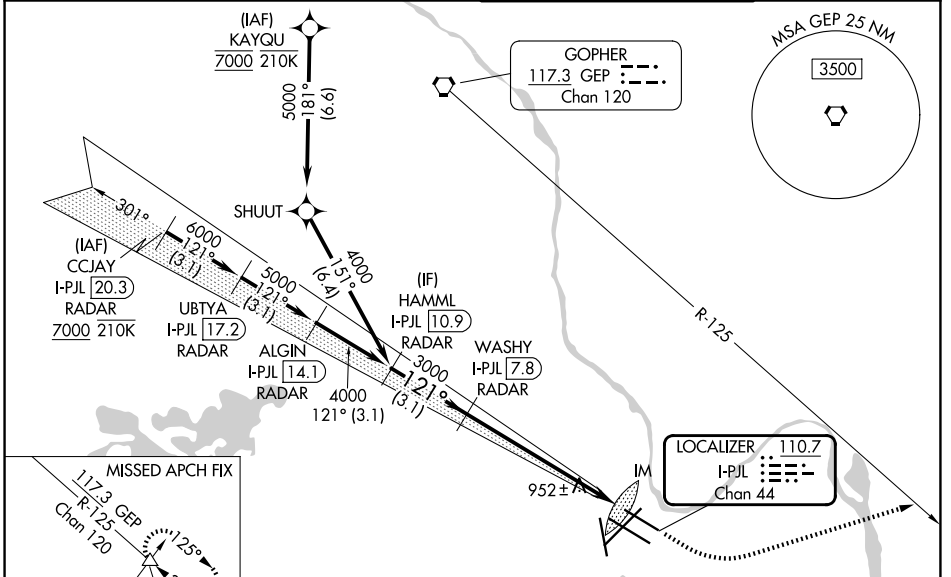
LOC/DME I-PJL 110.7 Chan 44	APP CRS 121°	Rwy Ldg TDZE 7620 841	Apt Elev 842
------------------------------------------	------------------------	-----------------------------	-----------------

ILS RWY 12L (SA CAT I)

MINNEAPOLIS-ST PAUL INTL/WOLD-CHAMBERLAIN (MSP)

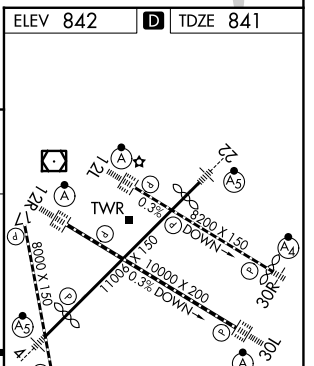
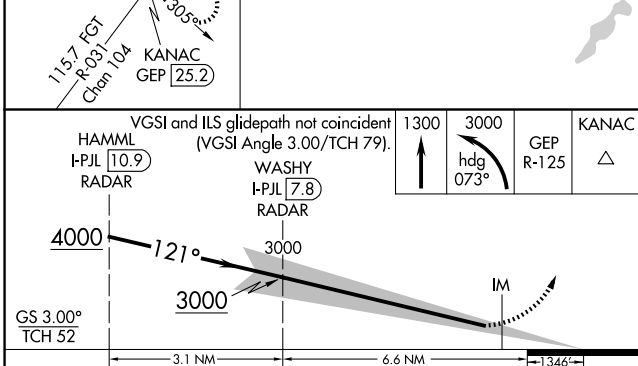
RNP APCH - GPS. From KAYQU. DME or RADAR required.	ALSF-2 	MISSED APPROACH: Climb to 1300 then climbing left turn to 3000 on heading 073° and on GEP VORTAC R-125 to KANAC INT/ GEP 25.2 DME and hold, continue climb-in-hold to 3000.
Simultaneous approach authorized with Rwy 12R. Requires specific OPSPEC, MSPEC, or LOA approval and use of HUD to DH. Inop table does not apply to S-ILS-12L.		

D-ATIS 135.35 239.275	MINNEAPOLIS APP CON 118.725 335.65 (35) 119.3 335.65 (4-22, 12L-30R, 17) 126.95 335.65 (12R-30L)	MINNEAPOLIS TOWER 123.675 273.55 (17-35) 123.95 273.55 (12L-30R) 126.7 273.55 (4-22, 12R-30L)	GND CON 121.8 348.6 (N) 121.9 348.6 (S) 127.925 348.6 (W)
---------------------------------	--------------------------------------------------------------------------------------------------------------------------------	-----------------------------------------------------------------------------------------------------------------------------	-----------------------------------------------------------------------------------------



NC-1, 16 APR 2026 to 14 MAY 2026

NC-1, 16 APR 2026 to 14 MAY 2026



CATEGORY	A	B	C	D
S-ILS 12L	RA 147/14 150 DA 991			

SA CATEGORY I ILS - SPECIAL AIRCREW & AIRCRAFT CERTIFICATION REQUIRED

HIRL all rwys
REIL Rwy 17
TDZL/RCLS Rwys 12L, 12R, 30L, and 35