

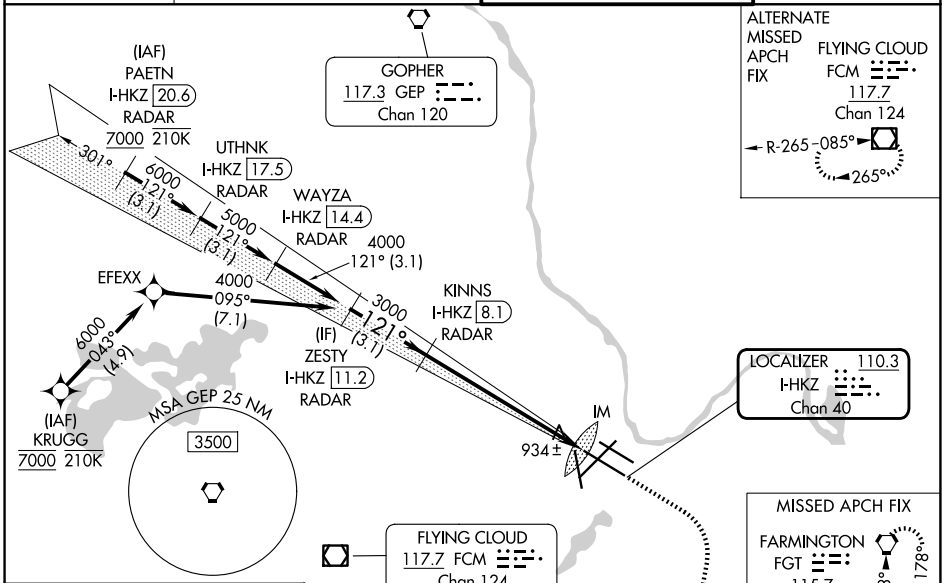
LOC/DME I-HKZ 110.3 Chan 40	APP CRS 121°	Rwy Ldg TDZE 842 Apt Elev 842	10000
-------------------------------------------------	------------------------	---------------------------------------------------	--------------

ILS RWY 12R (CAT II & III)

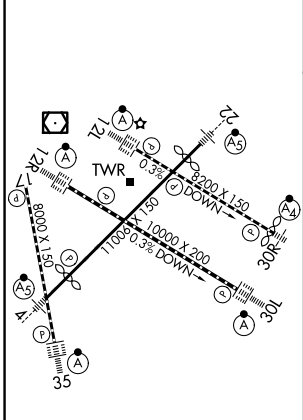
MINNEAPOLIS-ST PAUL INTL/WOLD-CHAMBERLAIN (MSP)

RNP APCH - GPS. From KRUGG. DME or RADAR required.	ALSIF-2 	MISSED APPROACH: Climb to 3000 then climbing right turn to 3000 direct FGT VORTAC and hold.
<p>Simultaneous approach authorized with Rwy 12L. CAT II: RVR 1000 authorized with specific OPSPEC, MSPEC, or LOA approval and use of autoland or HUD to touchdown.</p>		

D-ATIS 135.35 239.275	MINNEAPOLIS APP CON 118.725 335.65 (35) 119.3 335.65 (4-22, 12L-30R, 17) 126.95 335.65 (12R-30L)	MINNEAPOLIS TOWER 123.675 273.55 (17-35) 123.95 273.55 (12L-30R) 126.7 273.55 (4-22, 12R-30L)	GND CON 121.8 348.6 (N) 121.9 348.6 (S) 127.925 348.6 (W)
---------------------------------	--------------------------------------------------------------------------------------------------------------------------------	-----------------------------------------------------------------------------------------------------------------------------	-----------------------------------------------------------------------------------------



ELEV 842	D	TDZE 842
-----------------	----------	-----------------



VGSi and ILS glidepath not coincident (VGSi Angle 3.00/TCH 66).		1300	3000	FGT
ZESTY I-HKZ 11.2, RADAR 4000		IM 937		
KINNS I-HKZ 8.1, RADAR 3000		1031		
GS 3.00° TCH 50	3.1 NM	6.6 NM		
CATEGORY	A	B	C	D
S-ILS 12R	CAT II RA 102/12 100 DA 942			
S-ILS 12R	CAT III RVR 06			

CATEGORY II & III ILS - SPECIAL AIRCREW & AIRCRAFT CERTIFICATION REQUIRED

HIRL all rwys
REIL Rwy 17
TDZL/RCLS Rwys 12L, 12R, 30L, and 35

ILS RWY 12R (CAT II & III)

NC-1, 16 APR 2026 to 14 MAY 2026

NC-1, 16 APR 2026 to 14 MAY 2026