

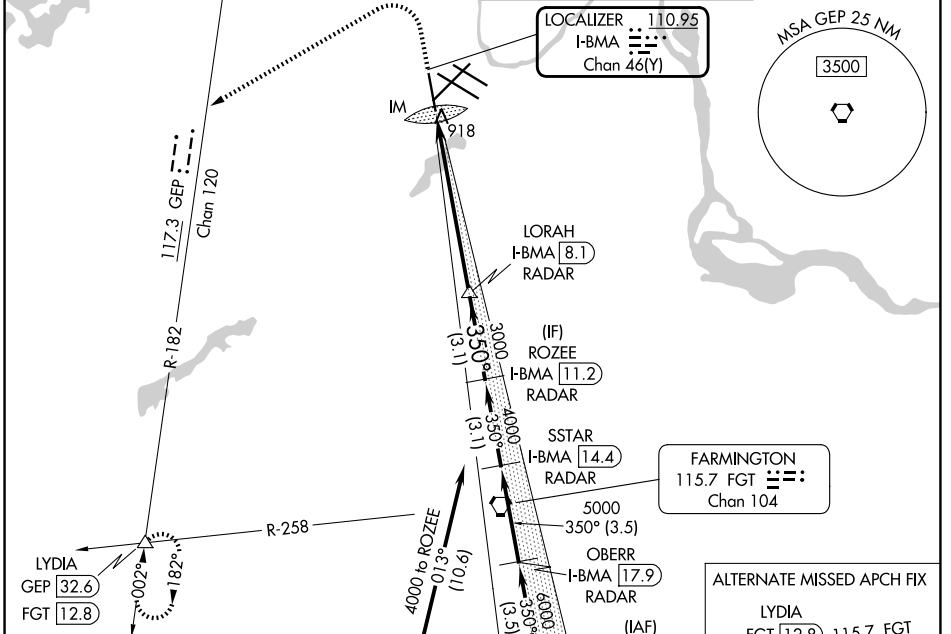
LOC/DME I-BMA 110.95 Chan 46(Y)	APP CRS 350°	Rwy Ldg TDZE Apt Elev	8000 834 842
---	------------------------	-----------------------------	---

ILS RWY 35 (SA CAT I)

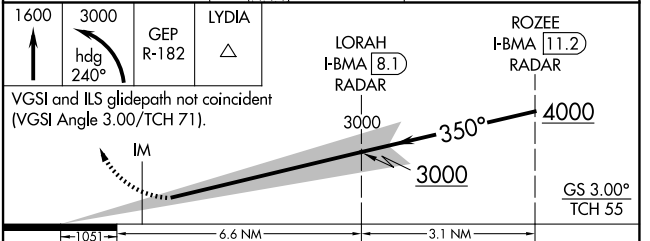
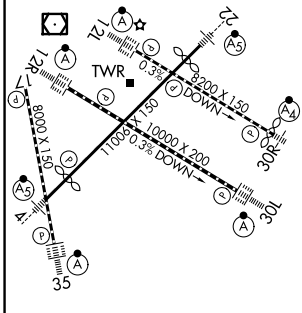
MINNEAPOLIS-ST PAUL INTL/WOLD-CHAMBERLAIN (MSP)

RNP APCH - GPS. From NNEWWW. DME or RADAR required.	ALSF-2	MISSED APPROACH: Climb to 1600 then climbing left turn to 3000 on heading 240° and on GEP VORTAC R-182 to LYDIA INT/GEF 32.6 DME and hold.
Requires specific OPSPEC, MSPEC, or LOA approval and use of HUD to DH.		

D-ATIS 135.35 239.275	MINNEAPOLIS APP CON 118.725 335.65 (35) 119.3 335.65 (4-22, 12L-30R, 17) 126.95 335.65 (12R-30L)	MINNEAPOLIS TOWER 123.675 273.55 (17-35) 123.95 273.55 (12L-30R) 126.7 273.55 (4-22, 12R-30L)	GND CON 121.8 348.6 (N) 121.9 348.6 (S) 127.925 348.6 (W)
---------------------------------	--	---	---



ELEV 842	D	TDZE 834
----------	----------	----------



CATEGORY	A	B	C	D
S-ILS 35	RA 157/14 150 DA 984			

SA CATEGORY I ILS - SPECIAL AIRCREW & AIRCRAFT CERTIFICATION REQUIRED

HIRL all rwys
REIL Rwy 17
TDZL/RCLS Rwws 12L, 12R, 30L, and 35

NC-1, 16 APR 2026 to 14 MAY 2026

NC-1, 16 APR 2026 to 14 MAY 2026