

LOC/DME I-PJL 110.7 Chan 44	APP CRS 121°	Rwy Ldg TDZE Apt Elev	7620 841 842
---	------------------------	-----------------------------	---

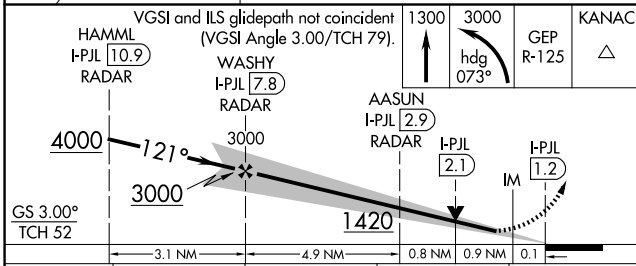
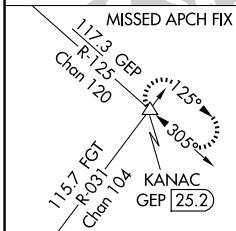
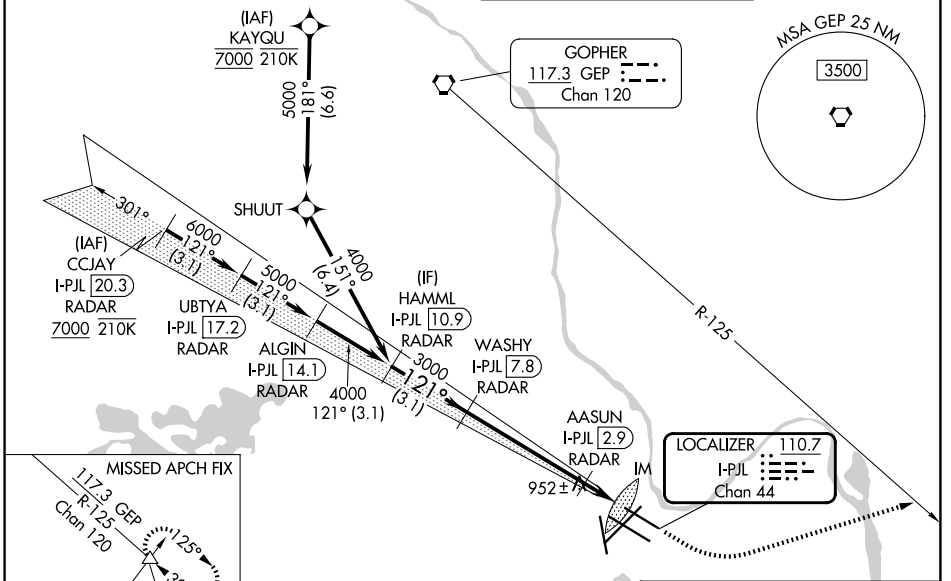
ILS or LOC RWY 12L

MINNEAPOLIS-ST PAUL INTL/WOLD-CHAMBERLAIN (MSP)

RNP APCH - GPS. From KAYQU.
DME or RADAR required.
Simultaneous approach authorized with Rwy 12R. For inop ALS, increase S-LOC 12L Cats C/D visibility to RVR 5500. Inop table does not apply to S-ILS 12L.

ALSF-2
MISSED APPROACH: Climb to 3000 then climbing left turn to 3000 on heading 073° and on GEP VORTAC R-125 to KANAC INT/GEP 25.2 DME and hold, continue climb-in-hold to 3000.

D-ATIS 135.35 239.275	MINNEAPOLIS APP CON 118.725 335.65 (35) 119.3 335.65 (4-22, 12L-30R, 17) 126.95 335.65 (12R-30L)	MINNEAPOLIS TOWER 123.675 273.55 (17-35) 123.95 273.55 (12L-30R) 126.7 273.55 (4-22, 12R-30L)	GND CON 121.8 348.6 (N) 121.9 348.6 (S) 127.925 348.6 (W)
---------------------------------	--	---	---



ELEV 842	TDZE 841
HIRL all rwys REIL Rwy 17	
TDZL/RCLS Rwys 12L, 12R, 30L, and 35	
FAF to MAP 6.6 NM	
Knots	60 90 120 150 180
Min:Sec	6:36 4:24 3:18 2:38 2:12

CATEGORY	A	B	C	D
S-ILS 12L	1041/18 200 (200-½)			
S-LOC 12L	1220/24 379 (400-½)	1220/35 379 (400-¾)		
CIRCLING	1360-1 518 (600-1)	1460-1¾ 618 (700-1¾)	1620-2½ 778 (800-2½)	

NC-1, 16 APR 2026 to 14 MAY 2026

NC-1, 16 APR 2026 to 14 MAY 2026