

LOC/DME I-HKZ <b>110.3</b> Chan <b>40</b>	APP CRS <b>121°</b>	Rwy Ldg TDZE Apt Elev	<b>10000</b> <b>842</b> <b>842</b>
---	------------------------	-----------------------------	--

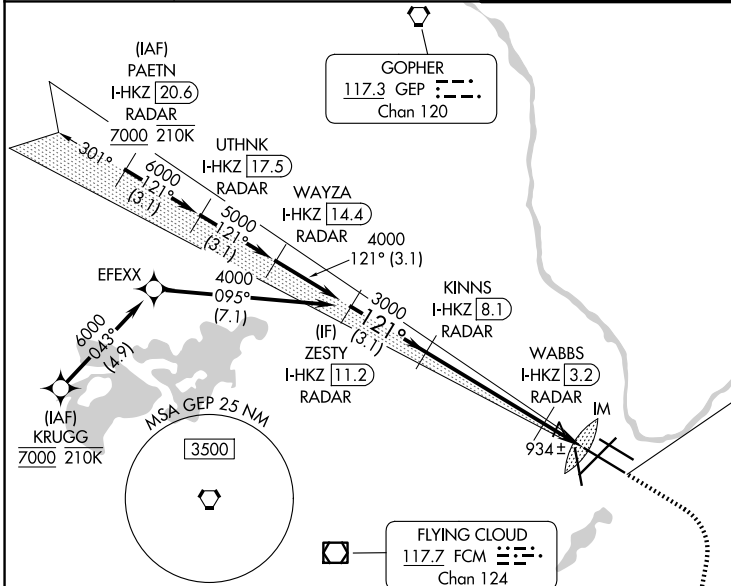
# ILS or LOC RWY 12R

MINNEAPOLIS-ST PAUL INTL/WOLD-CHAMBERLAIN (MSP)

RNP APCH - GPS. From KRUGG. DME or RADAR required.	ALSf-2 
Simultaneous approach authorized with Rwy 12L.	

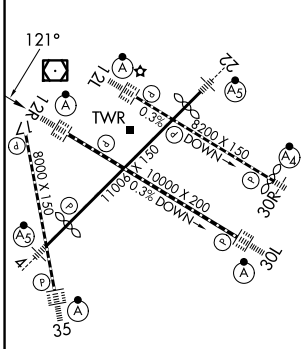
MISSED APPROACH: Climb to 3000 then climbing right turn to 3000 direct FGT VORTAC and hold.

D-ATIS <b>135.35 239.275</b>	MINNEAPOLIS APP CON <b>118.725 335.65 (35)</b> <b>119.3 335.65 (4-22, 12L-30R, 17)</b> <b>126.95 335.65 (12R-30L)</b>	MINNEAPOLIS TOWER <b>123.675 273.55 (17-35)</b> <b>123.95 273.55 (12L-30R)</b> <b>126.7 273.55 (4-22, 12R-30L)</b>	GND CON <b>121.8 348.6 (N)</b> <b>121.9 348.6 (S)</b> <b>127.925 348.6 (W)</b>
---------------------------------	--	---	---



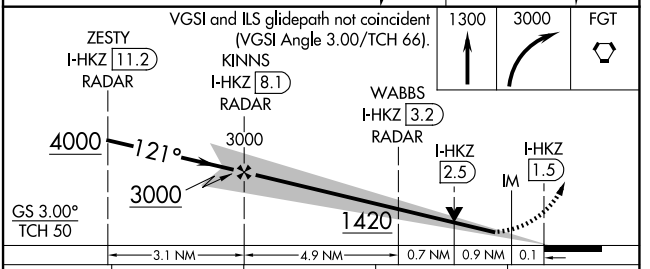
ALTERNATE MISSED APCH FIX  
FLYING CLOUD  
FCM 117.7  
Chan 124  
R-265-085°

ELEV 842	<b>D</b>	TDZE 842
----------	----------	----------



HIRL all rwys  
REIL Rwy 17  
TDZL/RCLS Rws 12L, 12R, 30L, and 35  
FAF to MAP 6.6 NM

Knots	60	90	120	150	180
Min:Sec	6:36	4:24	3:18	2:38	2:12



CATEGORY	A	B	C	D
S-ILS 12R	1042/18 200 (200-1/2)			
S-LOC 12R	1240/24 398 (400-1/2)	1240/35 398 (400-3/4)		
CIRCLING	1360-1 518 (600-1)	1460-1 3/4 618 (700-1 3/4)	1620-2 1/2 778 (800-2 1/2)	

NC-1, 16 APR 2026 to 14 MAY 2026

NC-1, 16 APR 2026 to 14 MAY 2026