

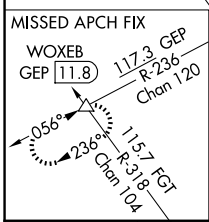
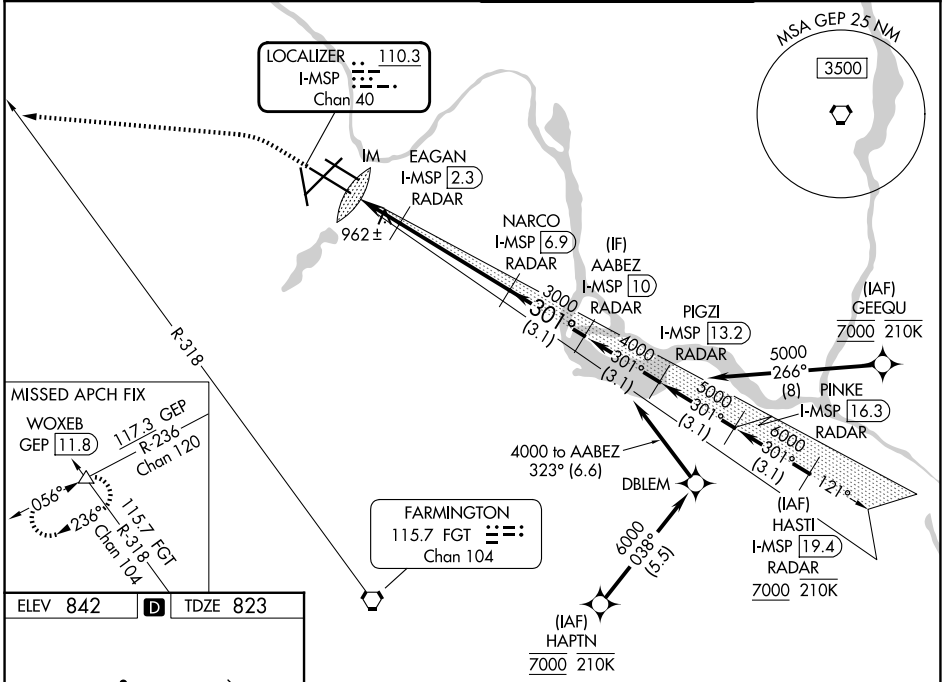
LOC/DME I-MSP 110.3 Chan 40	APP CRS 301°	Rwy Ldg 10000 TDZE 823 Apt Elev 842
---	------------------------	--

ILS or LOC RWY 30L

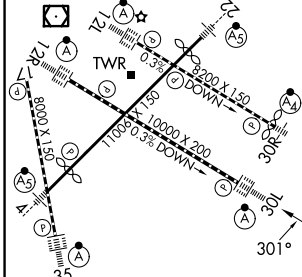
MINNEAPOLIS-ST PAUL INTL/WOLD-CHAMBERLAIN (MSP)

RNP APCH - GPS. From GEEQU or HAPTIN. DME or RADAR required.	ALSF-2 	MISSED APPROACH: Climb to 1300 then climbing left turn to 3000 on heading 275° and on FGT VOR/DME R-318 to WOXEB INT/GEP VORTAC 11.8 DME and hold.
<p>⚠ Simultaneous approaches authorized with Rwy 30R and ILS V Rwy 35 (CONVERGING).</p>		

D-ATIS 135.35 239.275	MINNEAPOLIS APP CON 118.725 335.65 (35) 119.3 335.65 (4-22, 12L-30R, 17) 126.95 335.65 (12R-30L)	MINNEAPOLIS TOWER 123.675 273.55 (17-35) 123.95 273.55 (12L-30R) 126.7 273.55 (4-22, 12R-30L)	GND CON 121.8 348.6 (N) 121.9 348.6 (S) 127.925 348.6 (W)
---------------------------------	--	---	---

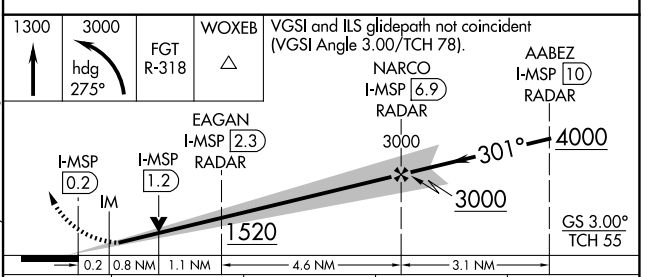


ELEV 842	D	TDZE 823
-----------------	----------	-----------------



HIRL all rwys
REIL Rwy 17
TDZL/RCLS Rwy 12L, 12R, 30L, and 35
FAF to MAP 6.7 NM

Knots	60	90	120	150	180
Min:Sec	6:42	4:28	3:21	2:41	2:14



CATEGORY	A	B	C	D
S-ILS 30L	1023/18 200 (200-½)			
S-LOC 30L	1220/24	397 (400-½)	1220/35	397 (400-¾)
CIRCLING	1360-1	518 (600-1)	1460-1¾ 618 (700-1¾)	1620-2½ 778 (800-2½)

NC-1, 16 APR 2026 to 14 MAY 2026

NC-1, 16 APR 2026 to 14 MAY 2026