

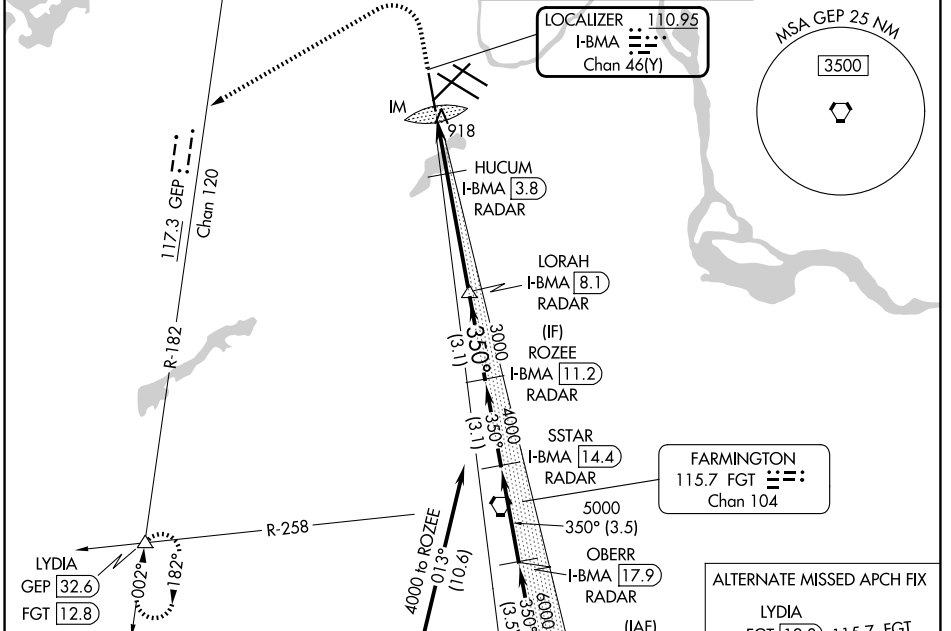
LOC/DME I-BMA <b>110.95</b> Chan <b>46(Y)</b>	APP CRS <b>350°</b>	Rwy Ldg TDZE Apt Elev	<b>8000</b> <b>834</b> <b>842</b>
---	------------------------	-----------------------------	---

# ILS Z or LOC RWY 35

MINNEAPOLIS-ST PAUL INTL/WOLD-CHAMBERLAIN (MSP)

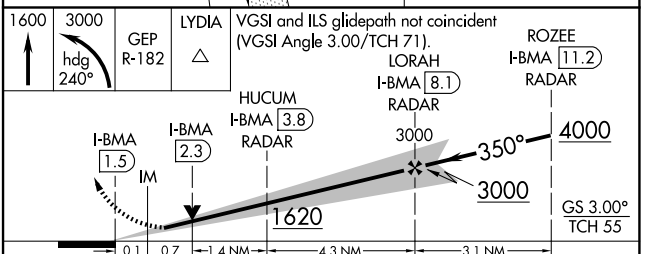
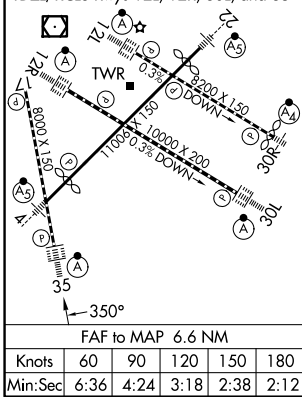
RNP APCH - GPS. From NNEWWW. DME or RADAR required.	ALSF-2	MISSED APPROACH: Climb to 1600 then climbing left turn to 3000 on heading 240° and on GEP VORTAC R-182 to LYDIA INT/GEOP 32.6 DME and hold.
--	--------	---

D-ATIS <b>135.35 239.275</b>	MINNEAPOLIS APP CON <b>118.725 335.65 (35)</b> <b>119.3 335.65 (4-22, 12L-30R, 17)</b> <b>126.95 335.65 (12R-30L)</b>	MINNEAPOLIS TOWER <b>123.675 273.55 (17-35)</b> <b>123.95 273.55 (12L-30R)</b> <b>126.7 273.55 (4-22, 12R-30L)</b>	GND CON <b>121.8 348.6 (N)</b> <b>121.9 348.6 (S)</b> <b>127.925 348.6 (W)</b>
---------------------------------	--	---	---



ELEV 842	<b>D</b>	TDZE 834
----------	----------	----------

HIRL all rwys  
REIL Rwy 17  
TDZL/RCLS Rwy 12L, 12R, 30L, and 35



CATEGORY	A	B	C	D
S-ILS 35	1034/18 200 (200-½)			
S-LOC 35	1180/24 346 (400-½)	1180/30 346 (400-¾)		
CIRCLING	1360-1 518 (600-1)	1460-1¾ 618 (700-1¾)	1620-2½ 778 (800-2½)	

NC-1, 16 APR 2026 to 14 MAY 2026

NC-1, 16 APR 2026 to 14 MAY 2026