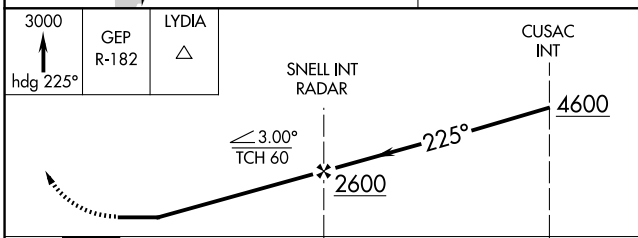
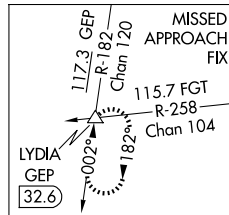
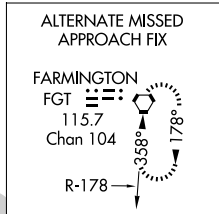
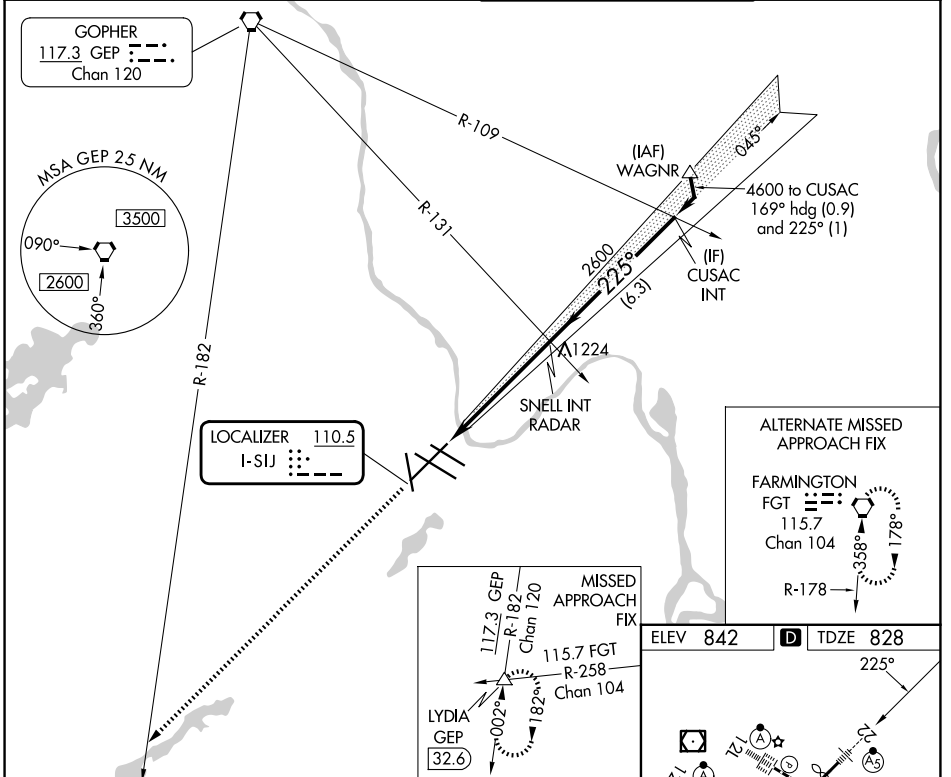


LOC I-SIJ 110.5	APP CRS 225°	Rwy Ldg 10006 TDZE 828 Apt Elev 842
---------------------------	------------------------	--

LOC RWY 22

MINNEAPOLIS-ST PAUL INTL/WOLD-CHAMBERLAIN (MSP)

	Rwy 22 helicopter visibility reduction below RVR 4000 NA. For inop ALS, increase S-22 Cat A and B visibility to RVR 5500, and Cat E visibility to 1 3/4 SM.	MALS R 	MISSED APPROACH: Climb to 3000 on heading 225° and GEP VORTAC R-182 to LYDIA INT/GEP 32.6 DME and hold.
	D-ATIS 135.35 239.275	MINNEAPOLIS APP CON 118.725 335.65 (35) 119.3 335.65 (12L-30R, 4-22, 17) 126.95 335.65 (12R-30L)	MINNEAPOLIS TOWER 123.675 273.55 (17-35) 123.95 273.55 (12L-30R) 126.7 273.55 (12R-30L, 4-22)



ELEV 842	D TDZE 828
HIRL all rwys REL Rwy 17 TDZL/RCLS Rwys 12L, 12R, 30L, and 35	
FAF to MAP 5.4 NM	
CATEGORY	A B C D E
S-22	1420/40 592 (600-3/4) 1420-1 1/4 592 (600-1 1/4)
CIRCLING	1420-1 578 (600-1) 1460-1 3/4 1620-2 1/2 1800-3 618 (700-1 3/4) 778 (800-2 1/2) 958 (1000-3)
	Knots 60 90 120 150 180
	Min:Sec 5:24 3:36 2:42 2:10 1:48

NC-1, 16 APR 2026 to 14 MAY 2026

NC-1, 16 APR 2026 to 14 MAY 2026

LOC RWY 22