

(LEINY6.LEINY) 17229

# LEINY SIX DEPARTURE (RNAV)

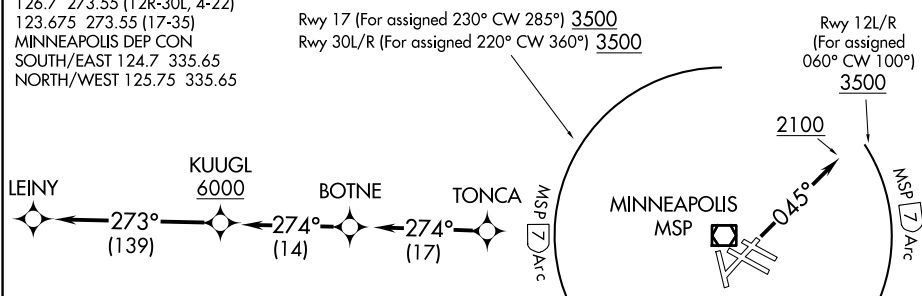
MINNEAPOLIS-ST PAUL INTL/WOLD-CHAMBERLAIN (MSP)

AL-264 (FAA)

MINNEAPOLIS, MINNESOTA

D-ATIS DEP  
120.8  
CLNC DEL  
133.2  
CPDLC  
MINNEAPOLIS TOWER  
123.95 273.55 (12L-30R)  
126.7 273.55 (12R-30L, 4-22)  
123.675 273.55 (17-35)  
MINNEAPOLIS DEP CON  
SOUTH/EAST 124.7 335.65  
NORTH/WEST 125.75 335.65

**TOP ALTITUDE:**  
**(JETS) 7000/**  
**(PROPS) 5000**



- NOTE: DME/DME/IRU or GPS required.
- NOTE: RNAV 1.
- NOTE: RADAR required.
- NOTE: For non-GPS equipped aircraft, GEP, RWF, FSD, ATY, and HON must be operational.

### TAKEOFF MINIMUMS

Rwys 4, 12R, 17, 22, 30L/R: Standard.

Rwy 12L: 300-1 ½ or standard with minimum climb of 207' per NM to 1100, or alternatively, with standard takeoff minimums and a normal 200' per NM climb gradient, takeoff must occur no later than 1300' prior to DER.

Rwy 35: Standard with minimum climb of 219' per NM to 2100.

NOTE: Chart not to scale.

### DEPARTURE ROUTE DESCRIPTION

TAKEOFF RUNWAY 4: Climb heading 045° to 2100. Thence . . . .

TAKEOFF RUNWAYS 12L/R: For assigned headings from 060° clockwise to 100°, cross MSP VOR/DME 7 DME Arc at or above 3500, maintain assigned altitude. If unable to comply, advise ATC as soon as possible prior to departure. Thence . . . .

TAKEOFF RUNWAY 17: For assigned headings from 230° clockwise to 285°, cross MSP VOR/DME 7 DME Arc at or above 3500, maintain assigned altitude. If unable to comply, advise ATC as soon as possible prior to departure. Thence . . . .

TAKEOFF RUNWAYS 22, 35: Climb on assigned heading for RADAR vectors. Thence . . . .

TAKEOFF RUNWAYS 30L/R: For assigned headings from 220° clockwise to 360°, cross MSP VOR/DME 7 DME Arc at or above 3500, maintain assigned altitude. If unable to comply, advise ATC as soon as possible prior to departure. Thence . . . .

. . . . expect RADAR vectors to TONCA, then on track 274° to BOTNE, then on track 274° to cross KUUGL at or above 6000, then on track 273° to LEINY. Turbojet aircraft maintain 7000 or lower assigned altitude, all other aircraft maintain 5000 or lower assigned altitude until BOTNE. Expect filed altitude/flight level ten minutes after departure.

# LEINY SIX DEPARTURE (RNAV)

(LEINY6.LEINY) 17AUG17

MINNEAPOLIS, MINNESOTA

MINNEAPOLIS-ST PAUL INTL/WOLD-CHAMBERLAIN (MSP)

NC-1, 16 APR 2026 to 14 MAY 2026

NC-1, 16 APR 2026 to 14 MAY 2026