

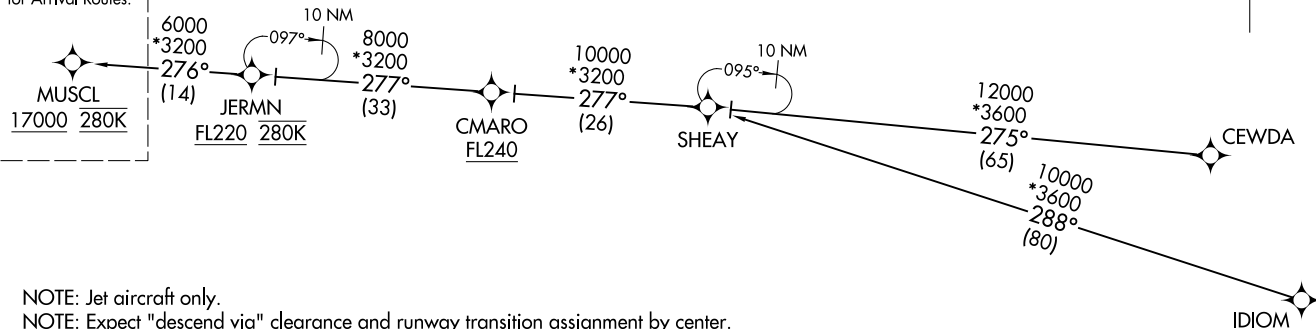
RNAV 1 - DME/DME/IRU or GPS.  
RADAR required.

(MUSCL.MUSCL4) 26078  
MINNEAPOLIS-ST PAUL INTL/WOLD-CHAMBERLAIN (MSP)  
MUSCL FOUR ARRIVAL (RNAV) Transition Routes  
AL-264 (FAA) MINNEAPOLIS, MINNESOTA

MUSCL FOUR ARRIVAL (RNAV) Transition Routes  
(MUSCL.MUSCL4) 19MAR26  
MINNEAPOLIS-ST PAUL INTL/WOLD-CHAMBERLAIN (MSP)  
MINNEAPOLIS, MINNESOTA

MINNEAPOLIS APP CON  
126.35 335.5  
D-ATIS  
135.35 239.275

See following page  
for Arrival Routes.



NOTE: Jet aircraft only.  
NOTE: Expect "descend via" clearance and runway transition assignment by center.  
Approach will assign landing runway.  
NOTE: Jet aircraft descend via Mach number until 280K, if unable, advise ATC.

- [CEWDA TRANSITION \(CEWDA.MUSCL4\)](#)
- [CMARO TRANSITION \(CMARO.MUSCL4\)](#)
- [IDIOM TRANSITION \(IDIOM.MUSCL4\)](#)
- [JERMN TRANSITION \(JERMN.MUSCL4\)](#)
- [SHEAY TRANSITION \(SHEAY.MUSCL4\)](#)

(CONTINUED ON FOLLOWING PAGE)

NOTE: Chart not to scale.

