

(ORSKY3.ORSKY) 23334  
**ORSKY THREE DEPARTURE**

MINNEAPOLIS-ST PAUL INTL/WOLD-CHAMBERLAIN (MSP)  
 AL-264 (FAA) MINNEAPOLIS, MINNESOTA

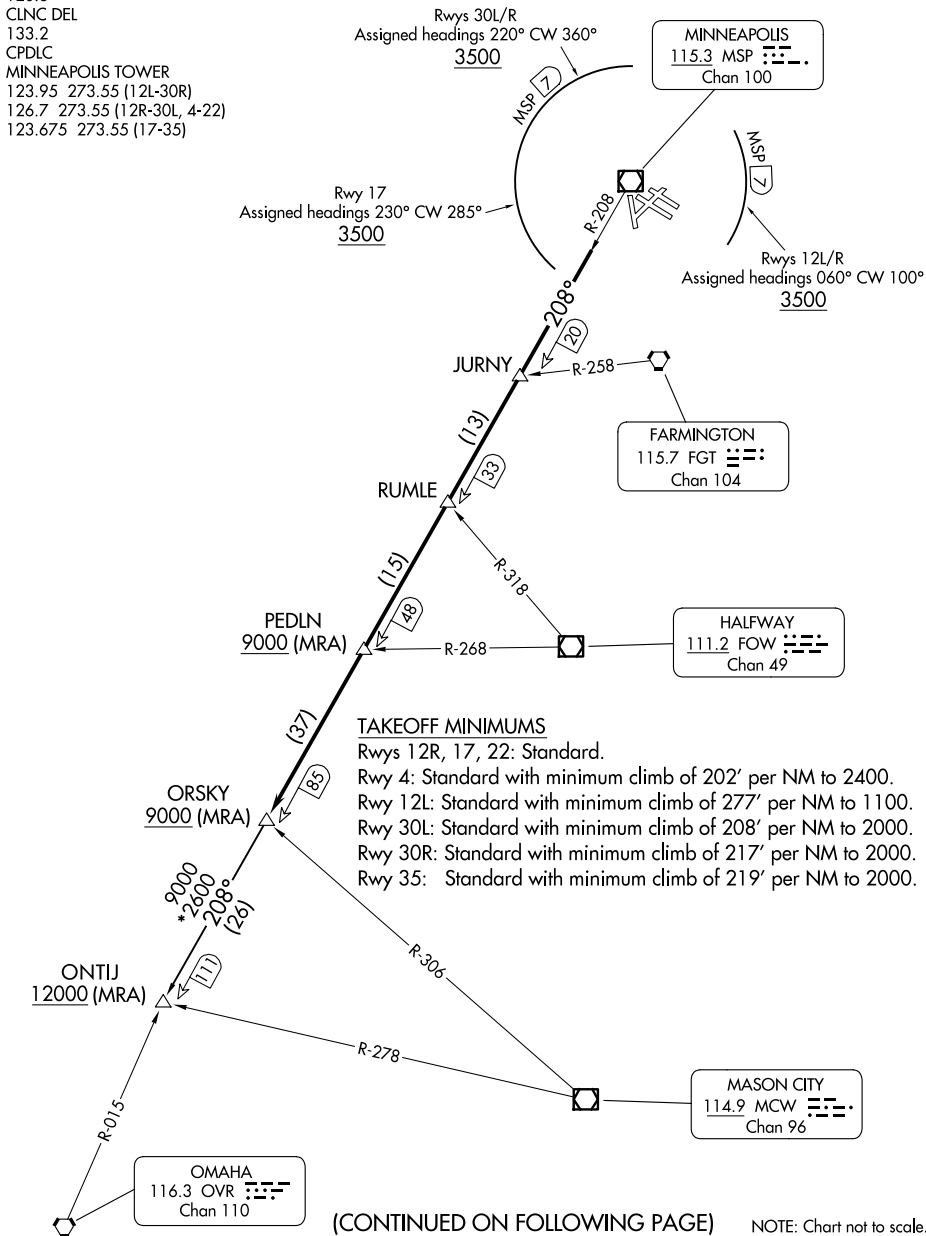
MINNEAPOLIS DEP CON  
 SOUTH/EAST 124.7 284.7  
 NORTH/WEST 125.75 284.7  
 D-ATIS DEP  
 120.8  
 CLNC DEL  
 133.2  
 CPDLC  
 MINNEAPOLIS TOWER  
 123.95 273.55 (12L-30R)  
 126.7 273.55 (12R-30L, 4-22)  
 123.675 273.55 (17-35)

RADAR required.

**TOP ALTITUDE:  
 ASSIGNED BY ATC**

NC-1, 16 APR 2026 to 14 MAY 2026

NC-1, 16 APR 2026 to 14 MAY 2026



(CONTINUED ON FOLLOWING PAGE)

NOTE: Chart not to scale.

(ORSKY3.ORSKY) 08SEP22  
**ORSKY THREE DEPARTURE**

MINNEAPOLIS, MINNESOTA  
 MINNEAPOLIS-ST PAUL INTL/WOLD-CHAMBERLAIN (MSP)



DEPARTURE ROUTE DESCRIPTION

TAKEOFF ALL RUNWAYS: Climb on assigned heading for RADAR vectors to assigned fix on MSP R-208, then on depicted route to ORSKY, then on transition. Maintain ATC assigned altitude. Expect filed altitude 10 minutes after departure.

ALL AIRCRAFT: ATC CROSSING RESTRICTIONS AND GRADIENTS: If unable to accept crossing restrictions and climb rates advise ATC prior to taxi.

RUNWAY 12L/R DEPARTURES: For assigned headings from 060° clockwise to 100°, cross MSP 7 DME at or above 3500, Rwy 12L: 540' per NM to 3500, 12R: 542' per NM to 3500.

RUNWAY 17: For assigned headings from 230° clockwise to 285°, cross MSP 7 DME at or above 3500, 512' per NM to 3500.

RUNWAYS 30L/R: For assigned headings from 220° clockwise to 360°, cross MSP 7 DME at or above 3500, 380' per NM to 3500.

ONTIJ TRANSITION (ORSKY3.ONTIJ): From over ORSKY INT on MSP R-208 to ONTIJ INT.

NC-1, 16 APR 2026 to 14 MAY 2026

NC-1, 16 APR 2026 to 14 MAY 2026