

WAAS CH <b>60927</b> <b>W22A</b>	APP CRS <b>225°</b>	Rwy Ldg <b>10006</b> TDZE <b>828</b> Apt Elev <b>842</b>
--	------------------------	--

# RNAV (GPS) RWY 22

MINNEAPOLIS-ST PAUL INTL/WOLD-CHAMBERLAIN (MSP)

**RNP APCH**

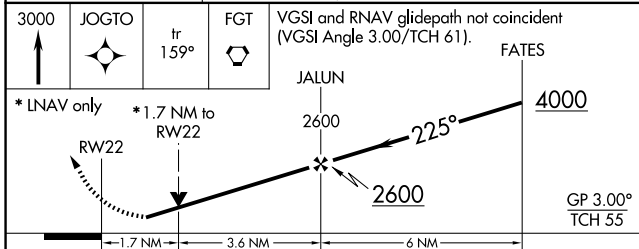
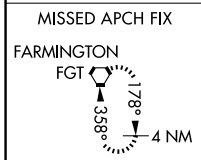
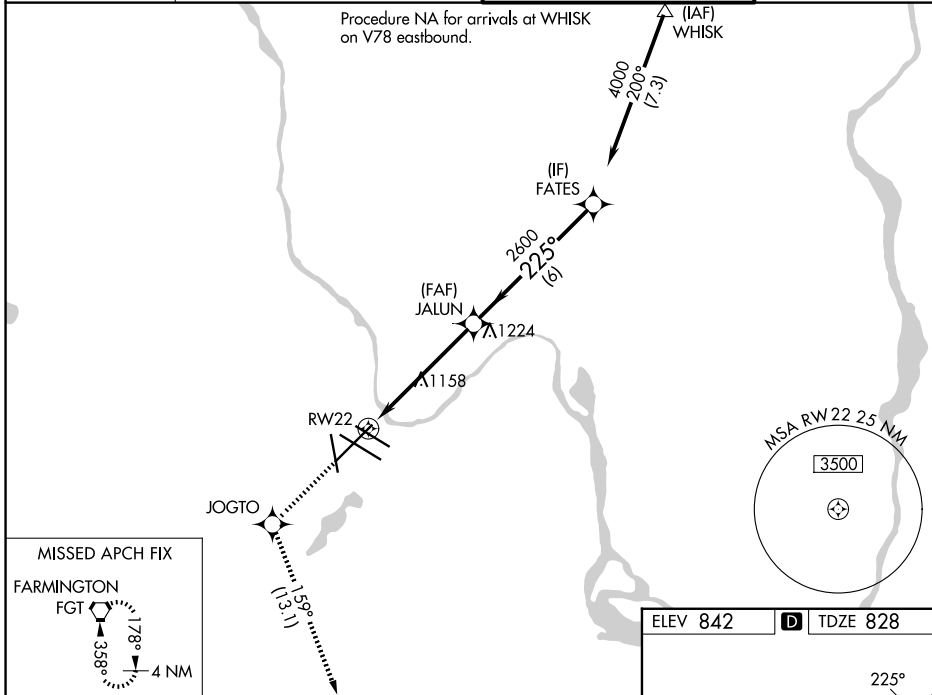
▼ Rwy 22 helicopter visibility reduction below RVR 4000 NA. For uncompensated Baro-VNAV systems, LNAV/VNAV NA below -27°C or above 54°C. For inop ALS, increase LPV Cat E visibility to RVR 5500, LNAV/VNAV all Cats visibility to RVR 6000 and LNAV Cat A/B visibility to RVR 5500, and Cat E to 1 ¼ SM.



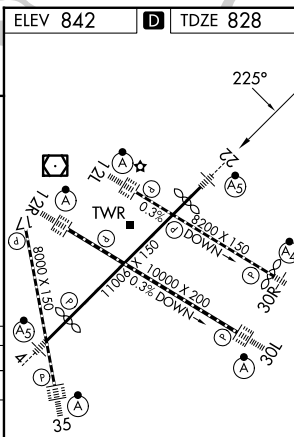
**MISSED APPROACH:** Climb to 3000 direct JOGTO and on track 159° to FGT VORTAC and hold.

D-ATIS <b>135.35 239.275</b>	MINNEAPOLIS APP CON <b>118.725 335.65</b> (35) <b>119.3 335.65</b> (12L-30R, 4-22, 17) <b>126.95 335.65</b> (12R-30L)	MINNEAPOLIS TOWER <b>123.675 273.55</b> (17-35) <b>123.95 273.55</b> (12L-30R) <b>126.7 273.55</b> (12R-30L, 4-22)	GND CON <b>121.8 348.6</b> (N) <b>121.9 348.6</b> (S) <b>127.925 348.6</b> (W)
---------------------------------	--	---	---

Procedure NA for arrivals at WHISK on V78 eastbound.



ELEV 842	<b>D</b> TDZE 828				
3000	JOGTO	fr 159°	FGT	VGSi and RNAV glidepath not coincident (VGSi Angle 3.00/TCH 61).	FATES
* LNAV only		* 1.7 NM to RWY 22	JALUN	2600	4000
GP 3.00°	TCH 55				
CATEGORY	A	B	C	D	E
LPV DA	1190/40 362 (400-¾)				
LNAV/VNAV DA	1227/45 399 (400-¾)				
LNAV MDA	1420/40	592 (600-¾)	1420-1¼	592 (600-1¼)	
CIRCLING	1420-1	578 (600-1)	1460-1¾ 618 (700-1¾)	1660-2¾ 818 (900-2¾)	1800-3 958 (1000-3)



HIRL all rwys  
REIL Rwy 17  
TDZL/RCLS Rwy 12L, 12R, 30L, and 35