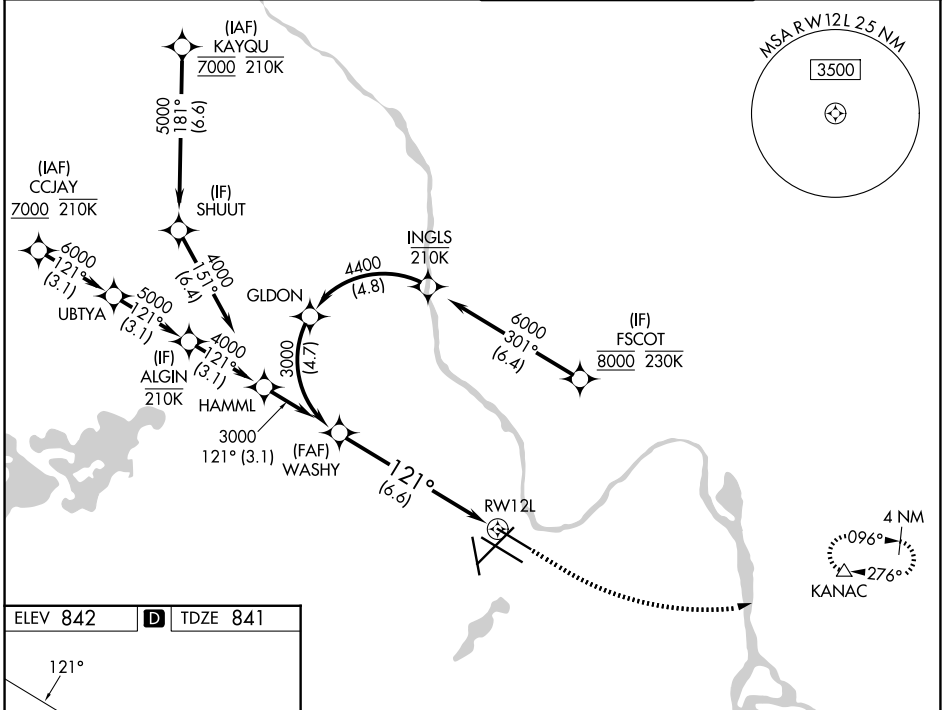


APP CRS	Rwy Ldg	<b>7620</b>
<b>121°</b>	TDZE	<b>841</b>
	Apt Elev	<b>842</b>

# RNAV (RNP) Y RWY 12L

MINNEAPOLIS-ST PAUL INTL/WOLD-CHAMBERLAIN (MSP)

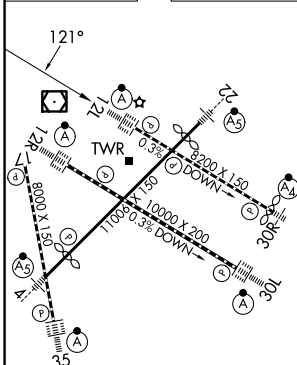
RNP AR APCH - GPS. Authorization required. From INGLS: RF.			ALSF-2	MISSED APPROACH: Climb to 1300 then climbing left turn to 3000 direct KANAC and hold.
<p>▼ For uncompensated Baro-VNAV systems, procedure NA below -20°C or above 54°C. Simultaneous approach authorized. For inop ALS, increase RNP 0.15 visibility all Cats to RVR 4500, and RNP 0.30 visibility all Cats to RVR 6000.</p>				
D-ATIS	MINNEAPOLIS APP CON	MINNEAPOLIS TOWER	GND CON	
<b>135.35 239.275</b>	<b>118.725 335.65</b> (35) <b>119.3 335.65</b> (4-22, 12L-30R, 17) <b>126.95 335.65</b> (12R-30L)	<b>123.675 273.55</b> (17-35) <b>123.95 273.55</b> (12L-30R) <b>126.7 273.55</b> (4-22, 12R-30L)	<b>121.8 348.6</b> (N) <b>121.9 348.6</b> (S) <b>127.925 348.6</b> (W)	



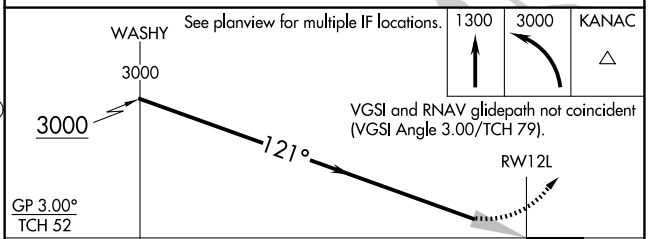
NC-1, 16 APR 2026 to 14 MAY 2026

NC-1, 16 APR 2026 to 14 MAY 2026

ELEV 842	<b>D</b>	TDZE 841
----------	----------	----------



HIRL all rwys  
REIL Rwy 17  
TDZL/RCLS Rwys 12L, 12R, 30L, and 35



GP 3.00° TCH 52				
CATEGORY	A	B	C	D
RNP 0.15 DA	1152/24 311 (400-½)			
RNP 0.30 DA	1243/40 402 (500-¾)			

## AUTHORIZATION REQUIRED

MINNEAPOLIS-ST PAUL INTL/WOLD-CHAMBERLAIN (MSP)  
44°53'N-93°13'W

# RNAV (RNP) Y RWY 12L