

RNAV (RNP) Y RWY 30L

MINNEAPOLIS-ST PAUL INTL/WOLD-CHAMBERLAIN (MSP)

APP CRS	Rwy Ldg	10000
301°	TDZE	823
	Apt Elev	842

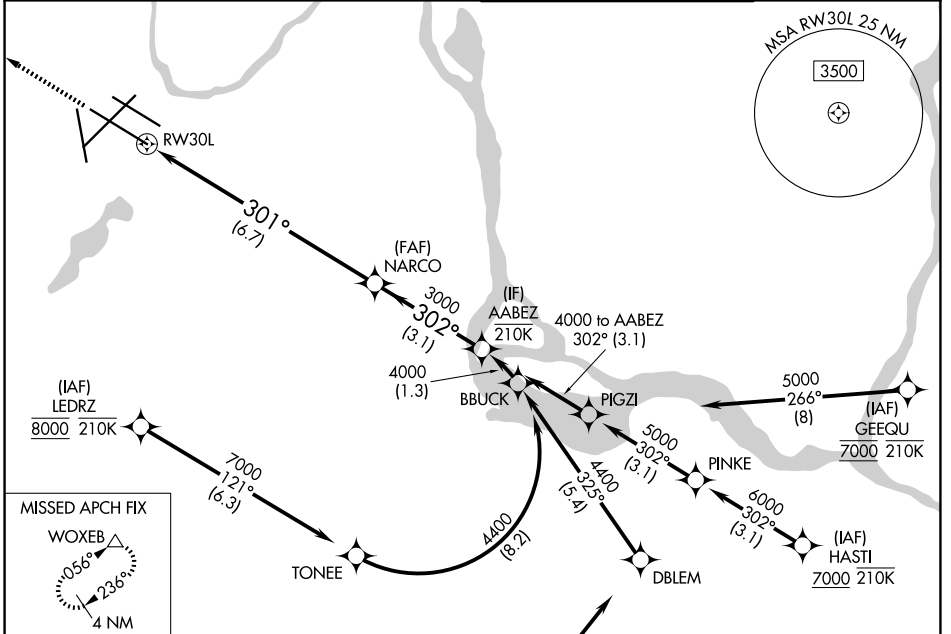
RNP AR APCH - GPS. Authorization required. From TONEE or BBUCK: RF.

▼ For uncompensated Baro-VNAV systems, procedure NA below -21°C or above 54°C. Simultaneous approach authorized.

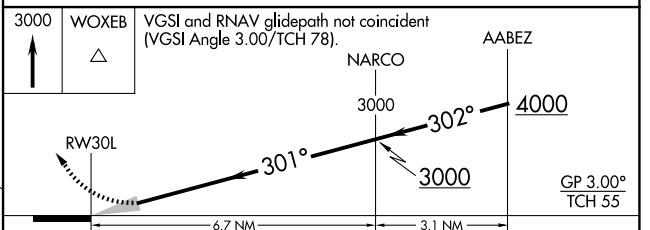
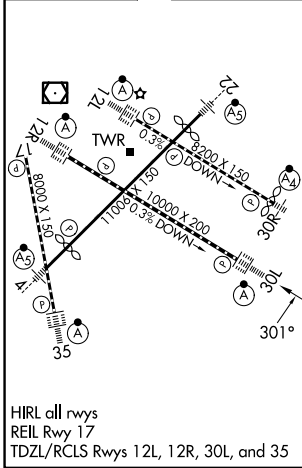
ALSF-2

MISSED APPROACH: Climb to 3000 direct WOXEB and hold.

D-ATIS	MINNEAPOLIS APP CON	MINNEAPOLIS TOWER	GND CON
135.35 239.275	118.725 335.65 (35) 119.3 335.65 (4-22, 12L-30R, 17) 126.95 335.65 (12R-30L)	123.675 273.55 (17-35) 123.95 273.55 (12L-30R) 126.7 273.55 (4-22, 12R-30L)	121.8 348.6 (N) 121.9 348.6 (S) 127.925 348.6 (W)



ELEV 842	D	TDZE 823
----------	----------	----------



CATEGORY	A	B	C	D
RNP 0.30 DA	1 150/26 327 (400-½)			

AUTHORIZATION REQUIRED

NC-1, 16 APR 2026 to 14 MAY 2026

NC-1, 16 APR 2026 to 14 MAY 2026