

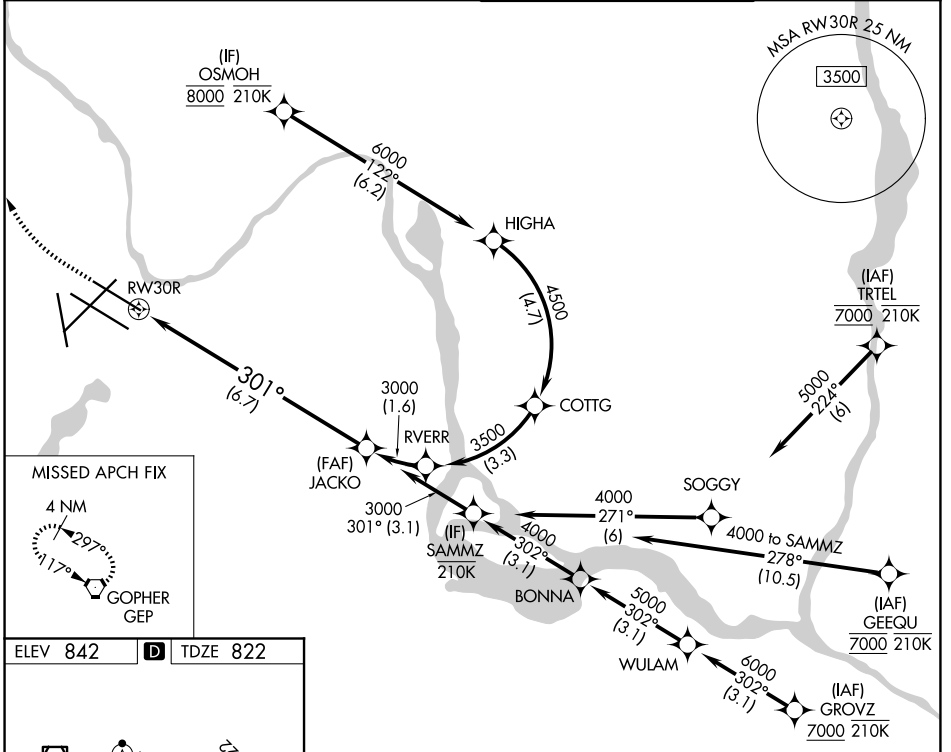
# RNAV (RNP) Y RWY 30R

MINNEAPOLIS-ST PAUL INTL/WOLD-CHAMBERLAIN (MSP)

APP CRS	Rwy Ldg	<b>8000</b>
<b>301°</b>	TDZE	<b>822</b>
	Apt Elev	<b>842</b>

RNP AR APCH - GPS. Authorization required. From HIGHA: RF.		MALSF	MISSED APPROACH: Climb to 1300 then climbing right turn to 3000 direct GEP VORTAC and hold.
For uncompensated Baro-VNAV systems, procedure NA below -20°C or above 54°C. Inop table does not apply to RNP 0.15. Simultaneous approach authorized.			

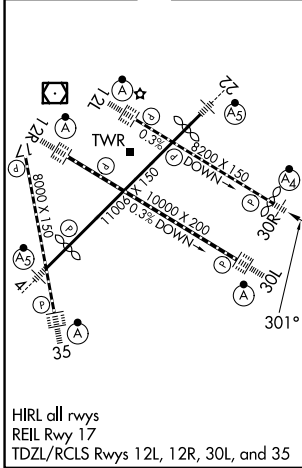
D-ATIS	MINNEAPOLIS APP CON	MINNEAPOLIS TOWER	GND CON
<b>135.35 239.275</b>	<b>118.725 335.65 (35)</b> <b>119.3 335.65 (4-22, 12L-30R, 17)</b> <b>126.95 335.65 (12R-30L)</b>	<b>123.675 273.55 (17-35)</b> <b>123.95 273.55 (12L-30R)</b> <b>126.7 273.55 (4-22, 12R-30L)</b>	<b>121.8 348.6 (N)</b> <b>121.9 348.6 (S)</b> <b>127.925 348.6 (W)</b>



NC-1, 16 APR 2026 to 14 MAY 2026

NC-1, 16 APR 2026 to 14 MAY 2026

ELEV 842	<b>D</b>	TDZE 822
----------	----------	----------



HIRL all rwys  
REIL Rwy 17  
TDZL/RCLS Rwys 12L, 12R, 30L, and 35

1300	3000	GEP	VGSI and RNAV glidepath not coincident (VGSI Angle 3.00/TCH 71). See planview for multiple IF locations.	JACKO	3000
		RWY 30R		301°	
		6.7 NM		3000	
				GP 3.00°	
				TCH 55	

CATEGORY	A	B	C	D
RNP 0.15 DA		1097/50	275 (300-1)	
RNP 0.30 DA		1298/60	476 (500-1¼)	

## AUTHORIZATION REQUIRED