

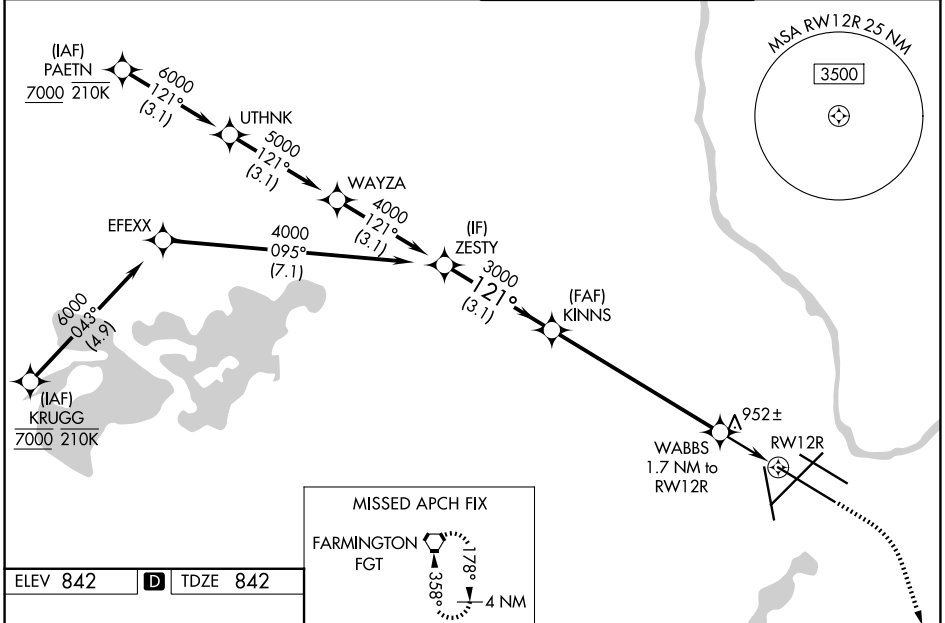
WAAS CH 50125 W12A	APP CRS 121°	Rwy Ldg 10000 TDZE 842 Apt Elev 842
--	------------------------	--

RNAV (GPS) Z RWY 12R

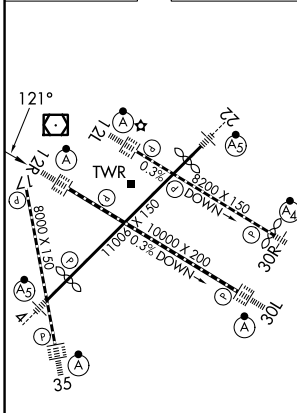
MINNEAPOLIS-ST PAUL INTL/WOLD-CHAMBERLAIN (MSP)

RNP APCH - GPS.	ALSF-2	MISSED APPROACH: Climb to 1300 then climbing right turn to 3000 direct FGT VORTAC and hold.
<p>▼ For uncompensated Baro-VNAV systems, LNAV/VNAV NA below -20°C or above 54°C. Simultaneous approach authorized with Rwy 12L. Use of FD or AP required during simultaneous operations. LNAV procedure NA during simultaneous operations. For inop ALS, increase LNAV/VNAV visibility all Cats to RVR 4500 and LNAV Cats C/D visibility to RVR 5500.</p>		

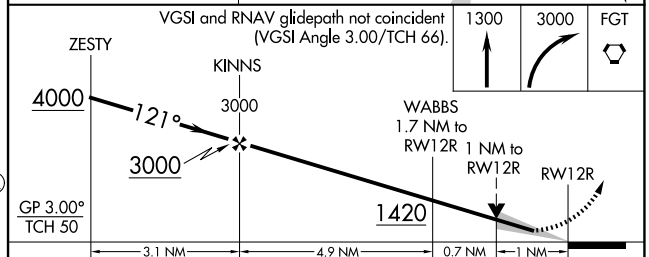
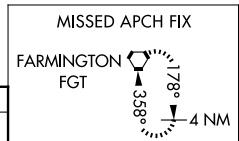
D-ATIS 135.35 239.275	MINNEAPOLIS APP CON 118.725 335.65 (35) 119.3 335.65 (4-22, 12L-30R, 17) 126.95 335.65 (12R-30L)	MINNEAPOLIS TOWER 123.675 273.55 (17-35) 123.95 273.55 (12L-30R) 126.7 273.55 (4-22, 12R-30L)	GND CON 121.8 348.6 (N) 121.9 348.6 (S) 127.925 348.6 (W)
---------------------------------	--	---	---



ELEV 842	D	TDZE 842
----------	----------	----------



HIRL all rwys
REIL Rwy 17
TDZL/RCLS Rwys 12L, 12R, 30L, and 35



CATEGORY	A	B	C	D
LPV DA	1042/18 200 (200-½)			
LNAV/VNAV DA	1111/24 269 (300-½)			
LNAV MDA	1220/24 378 (400-½)	1220/35 378 (400-¾)		
CIRCLING	1360-1 518 (600-1)	1460-1¾ 618 (700-1¾)	1620-2½ 778 (800-2½)	

NC-1, 16 APR 2026 to 14 MAY 2026

NC-1, 16 APR 2026 to 14 MAY 2026