

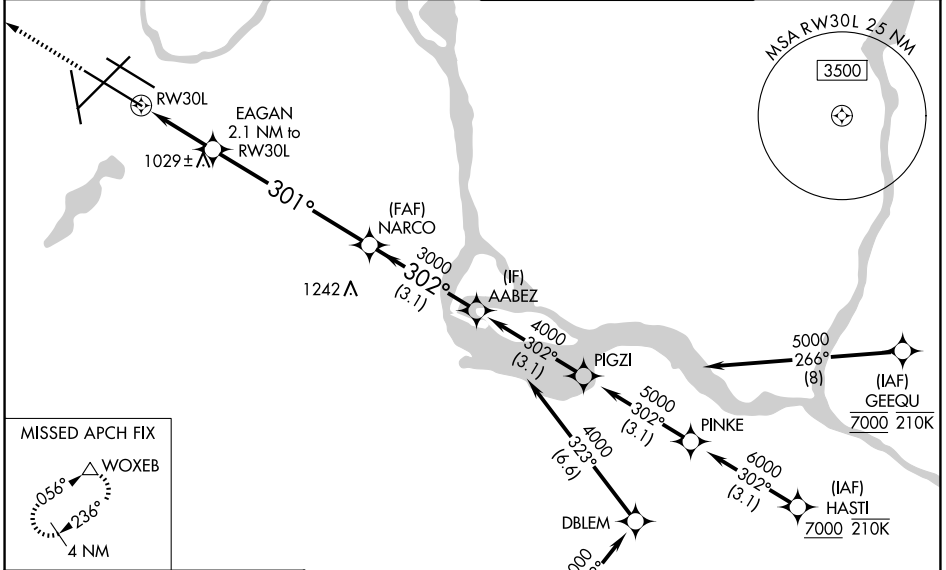
WAAS CH 56225 W30A	APP CRS 301°	Rwy Ldg 10000 TDZE 823 Apt Elev 842
----------------------------------------	------------------------	----------------------------------------------------------------

RNAV (GPS) Z RWY 30L

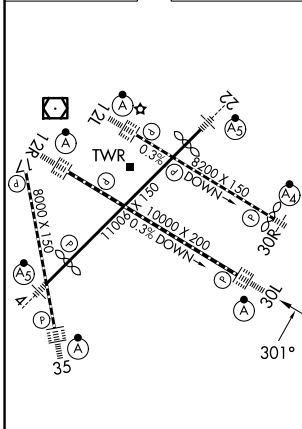
MINNEAPOLIS-ST PAUL INTL/WOLD-CHAMBERLAIN (MSP)

RNP APCH - GPS.		ALSF-2	MISSED APPROACH: Climb to 3000 direct WOXEB and hold.
⚠ For uncompensated Baro-VNAV systems, LNAV/VNAV NA below -21°C or above 54°C. Use of FD or AP required during simultaneous operations. LNAV procedure NA during simultaneous operations. Simultaneous approach authorized. For inop ALS, increase LNAV/VNAV visibility all Cats to RVR 4500.			

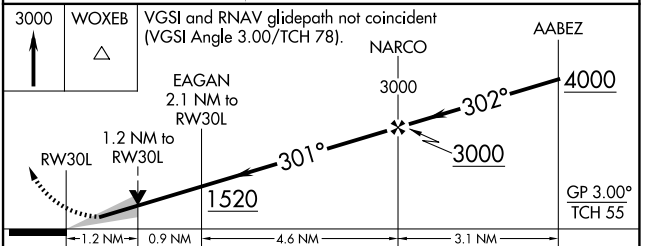
D-ATIS 135.35 239.275	MINNEAPOLIS APP CON 118.725 335.65 (35) 119.3 335.65 (4-22, 12L-30R, 17) 126.95 335.65 (12R-30L)	MINNEAPOLIS TOWER 123.675 273.55 (17-35) 123.95 273.55 (12L-30R) 126.7 273.55 (4-22, 12R-30L)	GND CON 121.8 348.6 (N) 121.9 348.6 (S) 127.925 348.6 (W)
---------------------------------	--------------------------------------------------------------------------------------------------------------------------------	-----------------------------------------------------------------------------------------------------------------------------	-----------------------------------------------------------------------------------------



ELEV 842	D	TDZE 823
----------	----------	----------



HIRL all rwy's
REIL Rwy 17
TDZL/RCLS Rwy's 12L, 12R, 30L, and 35



CATEGORY	A	B	C	D
LPV DA		1023/18	200 (200-½)	
LNAV/VNAV DA		1130/24	307 (300-½)	
LNAV MDA	1280/24	457 (500-½)	1280/45	457 (500-¾)
CIRCLING	1360-1	518 (600-1)	1460-1¾ 618 (700-1¾)	1620-2½ 778 (800-2½)

NC-1, 16 APR 2026 to 14 MAY 2026

NC-1, 16 APR 2026 to 14 MAY 2026