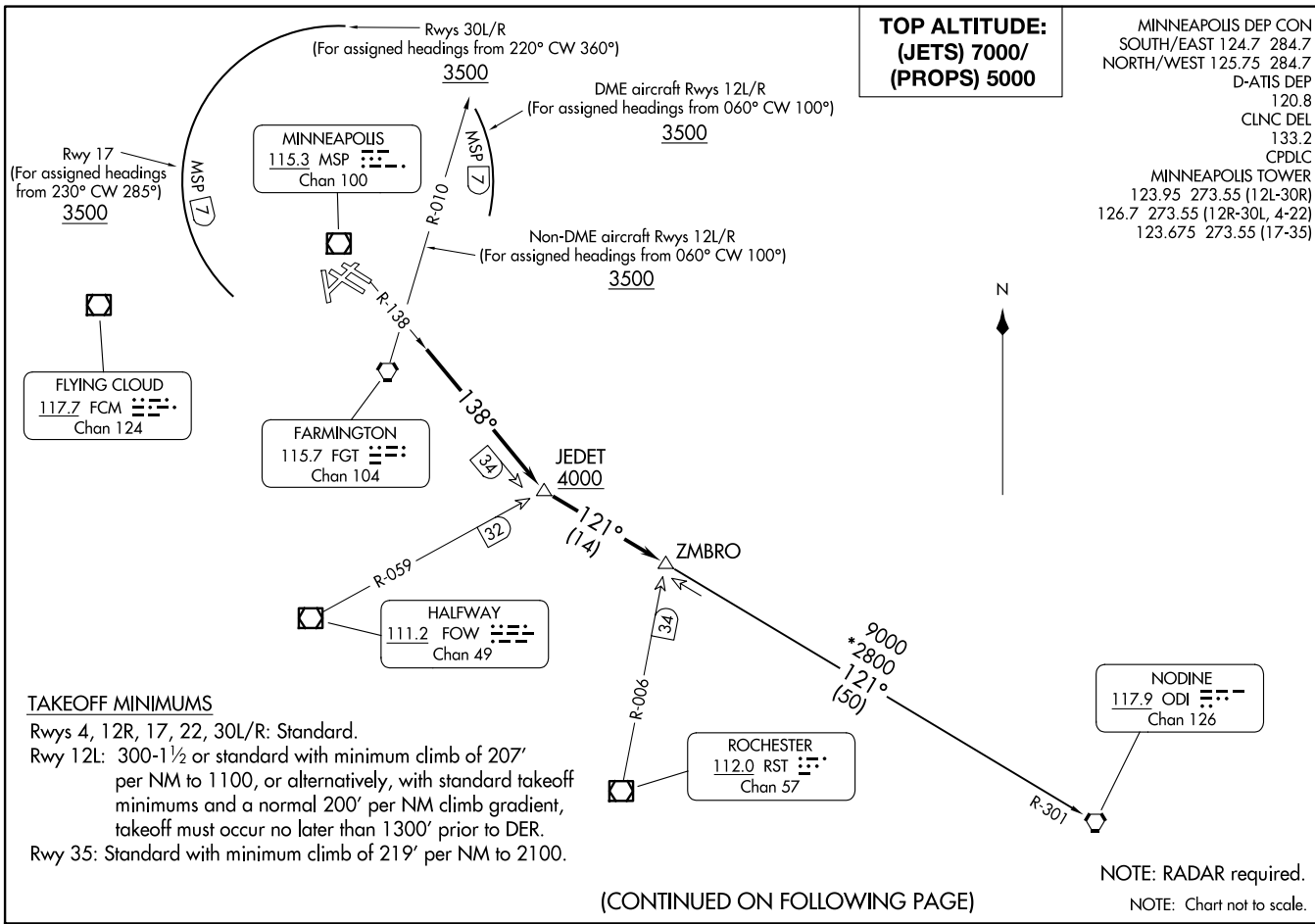


ZMBRO SEVEN DEPARTURE
(ZMBRO7.ZMBRO) 17AUG17

MINNEAPOLIS-ST PAUL INTL/WOLD-CHAMBERLAIN (MSP)
MINNEAPOLIS, MINNESOTA



**TOP ALTITUDE:
(JETS) 7000/
(PROPS) 5000**

MINNEAPOLIS DEP CON
 SOUTH/EAST 124.7 284.7
 NORTH/WEST 125.75 284.7
 D-ATIS DEP 120.8
 CLNC DEL 133.2
 CPDLC
 MINNEAPOLIS TOWER
 123.95 273.55 (12L-30R)
 126.7 273.55 (12R-30L, 4-22)
 123.675 273.55 (17-35)

ZMBRO7.ZMBRO) 23334
ZMBRO SEVEN DEPARTURE

MINNEAPOLIS-ST PAUL INTL/WOLD-CHAMBERLAIN (MSP)
AL-264 (FAA)
MINNEAPOLIS, MINNESOTA

TAKEOFF MINIMUMS
 Rwys 4, 12R, 17, 22, 30L/R: Standard.
 Rwy 12L: 300-1½ or standard with minimum climb of 207' per NM to 1100, or alternatively, with standard takeoff minimums and a normal 200' per NM climb gradient, takeoff must occur no later than 1300' prior to DER.
 Rwy 35: Standard with minimum climb of 219' per NM to 2100.

NOTE: RADAR required.
NOTE: Chart not to scale.

(CONTINUED ON FOLLOWING PAGE)



DEPARTURE ROUTE DESCRIPTION

TAKEOFF ALL RUNWAYS: Fly assigned heading for RADAR vectors to MSP R-138 to cross JEDET INT/MSP 34 DME, at or above 4000; then on ODI R-301 to ZMBRO INT/ODI 50 DME. Turbojet aircraft maintain 7000 or lower assigned altitude, all other aircraft maintain 5000 or lower assigned altitude, thence. . . .

DME EQUIPPED AIRCRAFT RUNWAYS 12L/R DEPARTURES: For assigned headings from 060° clockwise to 100°, cross MSP 7 DME at or above 3500, maintain assigned altitude. If unable to comply, advise ATC as soon as possible prior to departure, thence. . . .

NON-DME EQUIPPED AIRCRAFT RUNWAYS 12L/R DEPARTURES: For assigned headings from 060° clockwise to 100°, cross FGT R-010 at or above 3500, maintain assigned altitude. If unable to comply, advise ATC as soon as possible prior to departure, thence. . . .

TAKEOFF RUNWAY 17: For assigned headings from 230° clockwise to 285°, cross MSP 7 DME at or above 3500, maintain assigned altitude. If unable to comply, advise ATC as soon as possible prior to departure, thence. . . .

TAKEOFF RUNWAYS 30L/R: For assigned headings from 220° clockwise to 360°, cross MSP 7 DME at or above 3500, maintain assigned altitude. If unable to comply, advise ATC as soon as possible prior to departure, thence. . . .

TAKEOFF RUNWAYS 4, 22, 35: Initially assigned heading. Thence. . . .

. . . .on assigned transition or route. Expect clearance to filed altitude/flight level 10 (ten) minutes after departure.

NODINE TRANSITION (ZMBRO7.ODI): From over ZMBRO on ODI R-301 to ODI VORTAC.

NC-1, 16 APR 2026 to 14 MAY 2026

NC-1, 16 APR 2026 to 14 MAY 2026