

APP CRS	Rwy Ldg	N/A
339°	TDZE	N/A
	Apt Elev	3206

RNAV (GPS)-D

MISSOULA MONTANA (MISO)

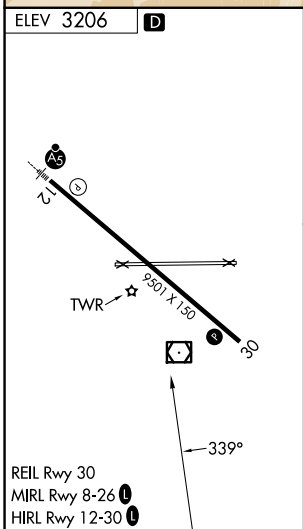
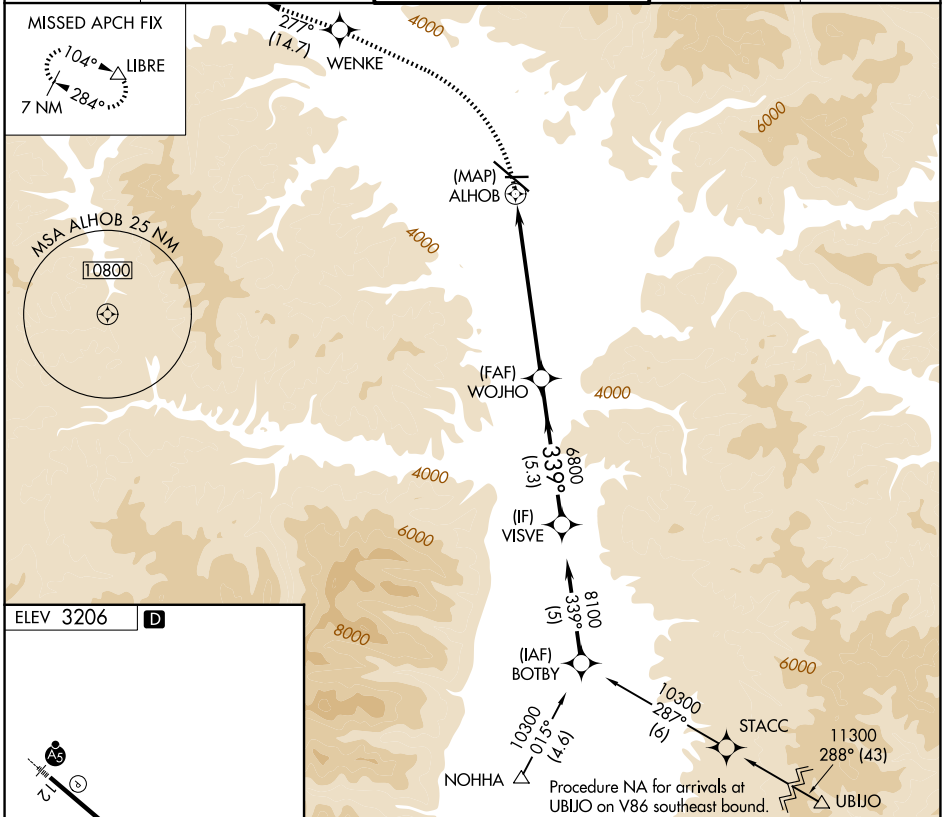
RNP APCH.

▲ Circling NA for Cats C and D northeast of Rwy 12-30.

❄ -11°C

MISSED APPROACH: Climbing left turn to 9600 direct WENKE and on track 277° to LIBRE and hold, continue climb-in-hold to 9600.

ATIS	SPOKANE APP CON *	MISSOULA TOWER *	GND CON	UNICOM
126.65	124.9 298.95	118.4 (CTAF) 377.175	121.9	122.95



9600	WENKE	tr 277°	LIBRE	VISVE
ALHOB		WOJHO	8100	
6.7 NM		5.3 NM		
CATEGORY	A	B	C	D
CIRCLING	4280-1¼ 1074 (1100-1¼)	4700-1½ 1494 (1500-1½)	4700-3 1494 (1500-3)	5140-3 1934 (2000-3)

NW-1, 16 APR 2026 to 14 MAY 2026

NW-1, 16 APR 2026 to 14 MAY 2026