

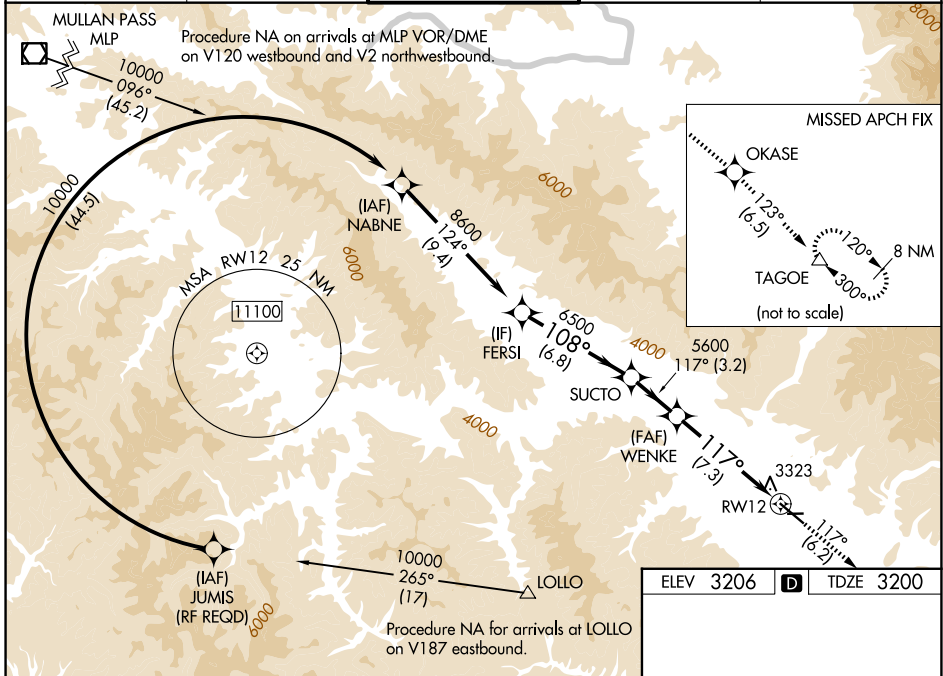
APP CRS	Rwy Ldg	9501
117°	TDZE	3200
	Apt Elev	3206

RNAV (RNP) Z RWY 12

MISSOULA MONTANA (MISO)

RNP AR APCH.		MALSR 	MISSED APPROACH: Climb to 13000 on track 117° to OKASE and on track 123° to TAGOE and hold, continue climb-in-hold to 13000.
<p> For uncompensated Baro-VNAV systems, LNAV/VNAV NA below -21° C (-6°F) or above 43°C (109°F).</p> <p> -11°C For inop ALS, increase RNP 0.12 all Cats visibility to RVR 6000. For inop ALS, increase RNP 0.30 all Cats visibility to 2½ SM. When local weather not received, procedure NA.</p>			<p>*MISSED approach requires minimum climb of 350 feet per NM to 8300; if unable to meet climb gradient, see RNAV (GPS) Y RWY 12.</p> <p>#MISSED approach requires minimum climb of 425 feet per NM to 8300.</p>

ATIS	SPOKANE APP CON*	MISSOULA TOWER*	GND CON	UNICOM
126.65	124.9 298.95	118.4(CTAF) 377.175	121.9	122.95



NW-1, 16 APR 2026 to 14 MAY 2026

NW-1, 16 APR 2026 to 14 MAY 2026

VGSI and RNAV glidepath not coincident (VGSI Angle 3.00/TCH 55).		13000	OKASE	TAGOE
FERSI	SUCTO	tr 117°	tr 123°	△
8600	6500	5600	RWY 12	
GP 3.00°				
TCH 45				
	6.8 NM	3.2 NM	7.3 NM	
CATEGORY	A	B	C	D
RNP 0.12 DA#	3518/40		318 (400-¾)	
RNP 0.30 DA*	3880-2		680 (700-2)	
AUTHORIZATION REQUIRED				

