

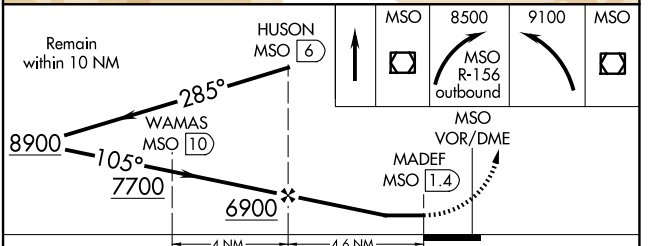
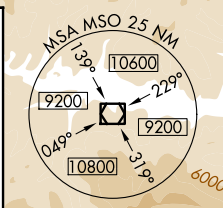
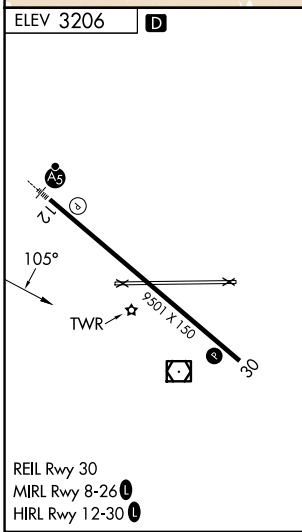
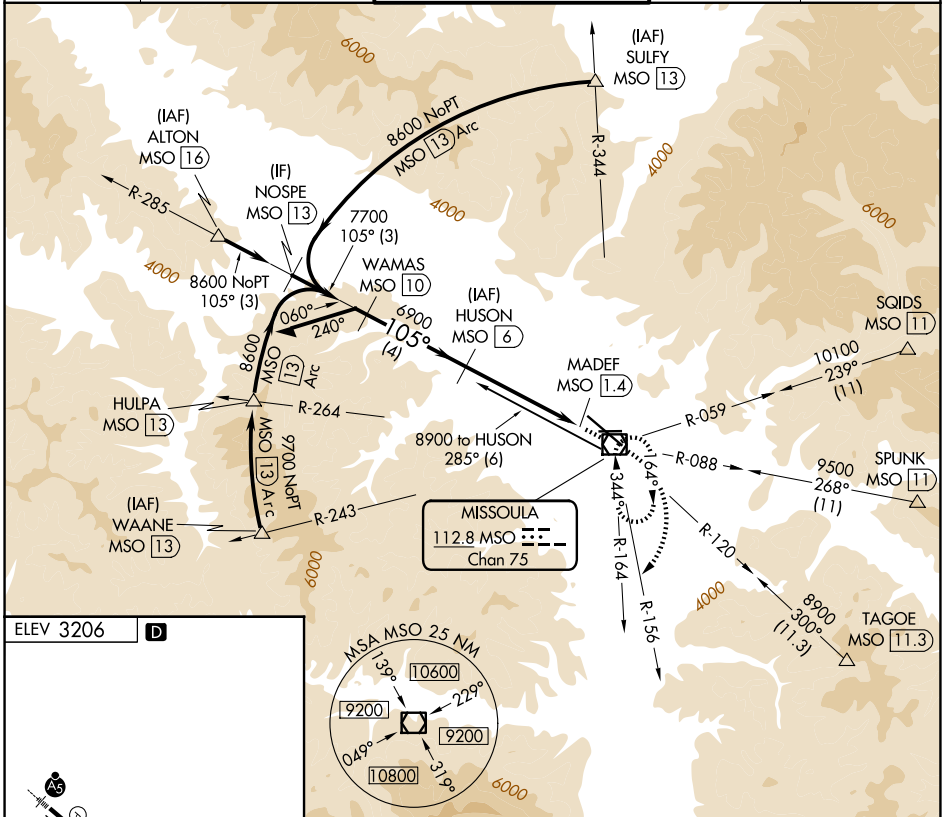
VOR/DME MSO 112.8 Chan 75	APP CRS 105°	Rwy Ldg TDZE Apt Elev 3206	N/A N/A
-----------------------------------------------	------------------------	-----------------------------------------	--------------------------

VOR-A

MISSOULA MONTANA (MSO)

DME required.		MISSED APPROACH: Climb direct MSO VOR/DME then climbing right turn to 8500 on MSO VOR/DME R-156 outbound then climbing left turn to 9100 direct to MSO VOR/DME and hold.	
			-11°C

ATIS 126.65	SPOKANE APP CON * 124.9 298.95	MISSOULA TOWER * 118.4 (CTAF) 377.175	GND CON 121.9	UNICOM 122.95
-----------------------	------------------------------------------	-------------------------------------------------	-------------------------	-------------------------



CATEGORY	A	B	C	D
CIRCLING	5120-1¼ 1914 (2000-1¼)	5120-1½ 1914 (2000-1½)	5120-3 1914 (2000-3)	5160-3 1954 (2000-3)

NW-1, 16 APR 2026 to 14 MAY 2026

NW-1, 16 APR 2026 to 14 MAY 2026