

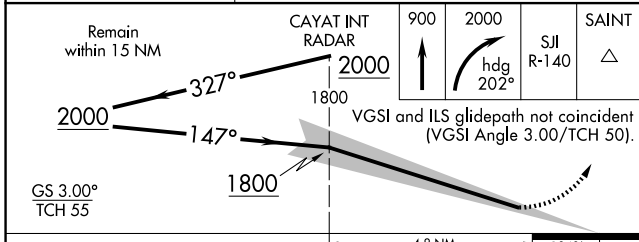
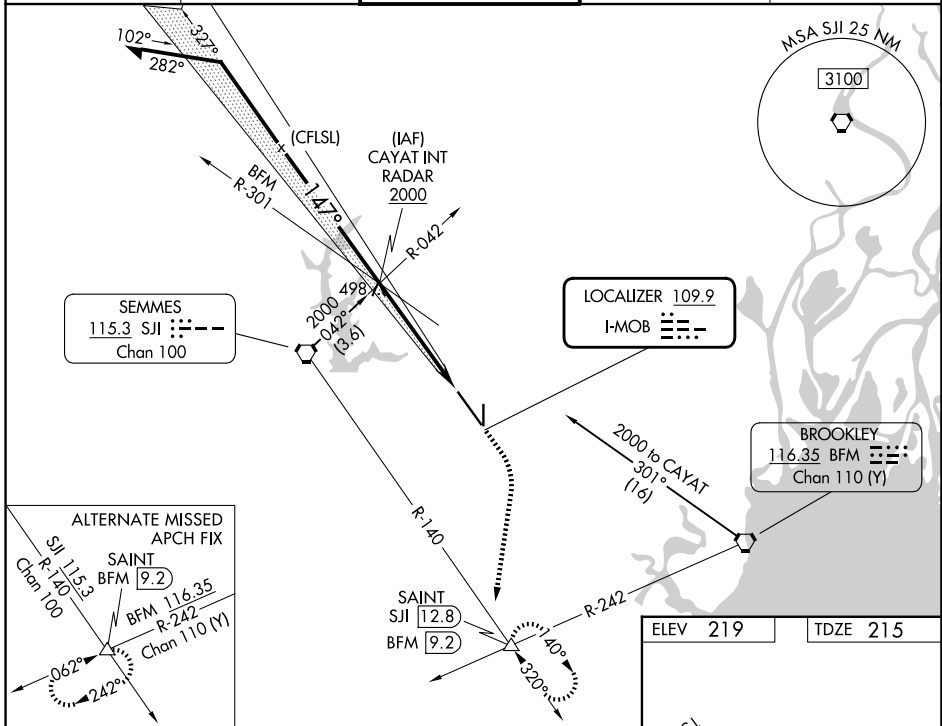
LOC I-MOB 109.9	APP CRS 147°	Rwy Ldg 8502
		TDZE 215
		Apt Elev 219

ILS RWY 15 (SA CAT I & II)

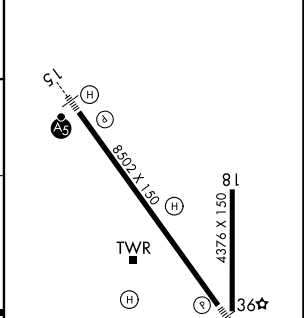
MOBILE RGNL (MOB)

<p>Procedure NA when tower closed.</p> <p>SA CAT I: Requires specific OPSPEC, MSPEC, or LOA approval and use of HUD to DH.</p> <p>ASR SA CAT II: Reduced Lighting: Requires specific OPSPEC, MSPEC, or LOA approval and use of autoland or HUD to touchdown.</p>	<p>MALSR</p>	<p>MISSED APPROACH: Climb to 900 then climbing right turn to 2000 on heading 202° then on SJI VORTAC R-140 to SAINT/ SJI 12.8 DME and hold.</p>
---	---------------------	--

ATIS 124.75 257.85	MOBILE APP CON ★ 118.5 269.3	MOBILE TOWER ★ 118.3 (CTAF) 239.0	GND CON 121.9 348.6	UNICOM 122.95
------------------------------	--	---	-------------------------------	-------------------------



ELEV 219	TDZE 215
----------	----------



CATEGORY	A	B	C	D
S-ILS 15	SA CAT I	RA 171/14	150 DA 365	
S-ILS 15	SA CAT II	RA 109/12	100 DA 315	

SA CATEGORY I & II ILS - SPECIAL AIRCREW & AIRCRAFT CERTIFICATION REQUIRED

MIRL Rwy 18-36
HIRL Rwy 15-33

SE-4, 16 APR 2026 to 14 MAY 2026

SE-4, 16 APR 2026 to 14 MAY 2026