

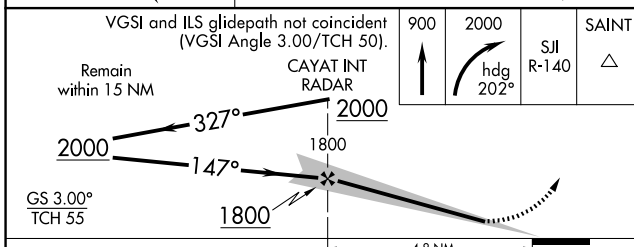
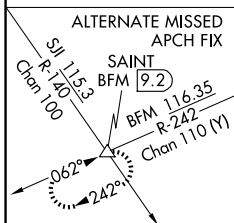
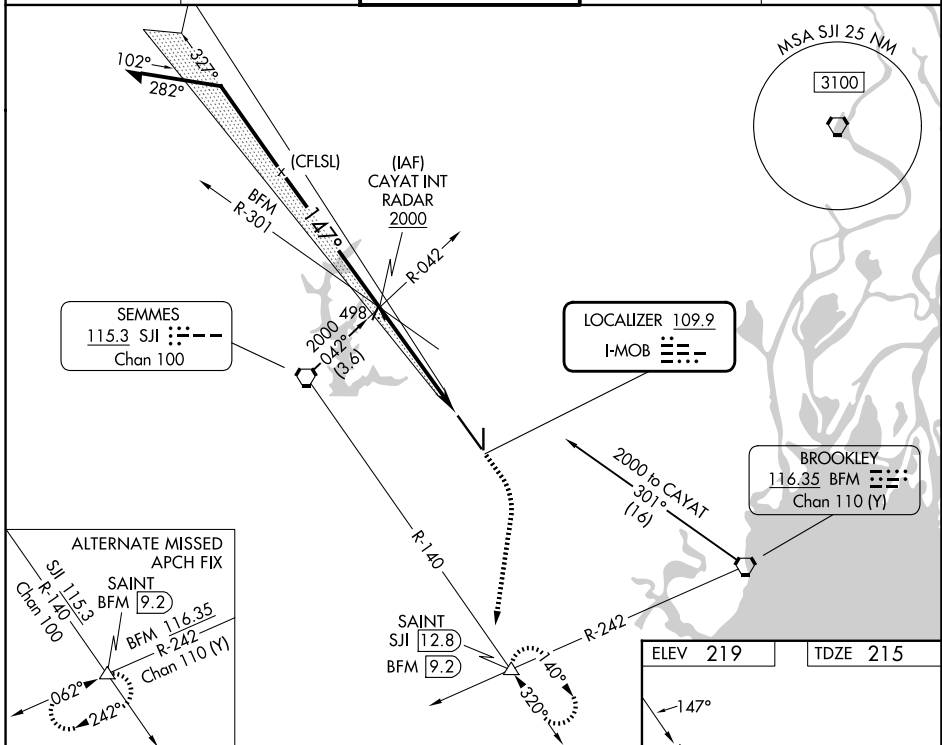
LOC I-MOB <b>109.9</b>	APP CRS <b>147°</b>	Rwy Ldg <b>8502</b>
		TDZE <b>215</b>
		Apt Elev <b>219</b>

# ILS or LOC RWY 15

MOBILE RGNL (MOB)

<p><b>▼</b> For inop ALS, increase S-ILS 15 Cat E visibility to RVR 4000 and S-LOC 15 Cats C/D/E visibility to 1½ mile.</p> <p><b>▲</b> *RVR 1800 authorized with use of FD or AP or HUD to DA.</p>	<p><b>MALSR</b></p>	<p><b>MISSED APPROACH:</b> Climb to 900 then climbing right turn to 2000 on heading 202° then on SJI VORTAC R-140 to SAINT/SJI 12.8 DME and hold.</p>
---	---------------------	---

ATIS <b>124.75 257.85</b>	MOBILE APP CON ★ <b>118.5 269.3</b>	MOBILE TOWER ★ <b>118.3 (CTAF) 0 239.0</b>	GND CON <b>121.9 348.6</b>	UNICOM <b>122.95</b>
------------------------------	--	---	-------------------------------	-------------------------



ELEV 219	TDZE 215
----------	----------

FAF to MAP 4.8 NM					
Knots	60	90	120	150	180
Min:Sec	4:48	3:12	2:24	1:55	1:36

CATEGORY	A	B	C	D	E
S-ILS 15*	415/24 200 (200-½)				
S-LOC 15	700/24	485 (500-½)	700/50		485 (500-1)
CIRCLING	700-1½	481 (500-1½)	740-1½ 521 (600-1½)	780-2 561 (600-2)	NA

SE-4, 16 APR 2026 to 14 MAY 2026

SE-4, 16 APR 2026 to 14 MAY 2026