

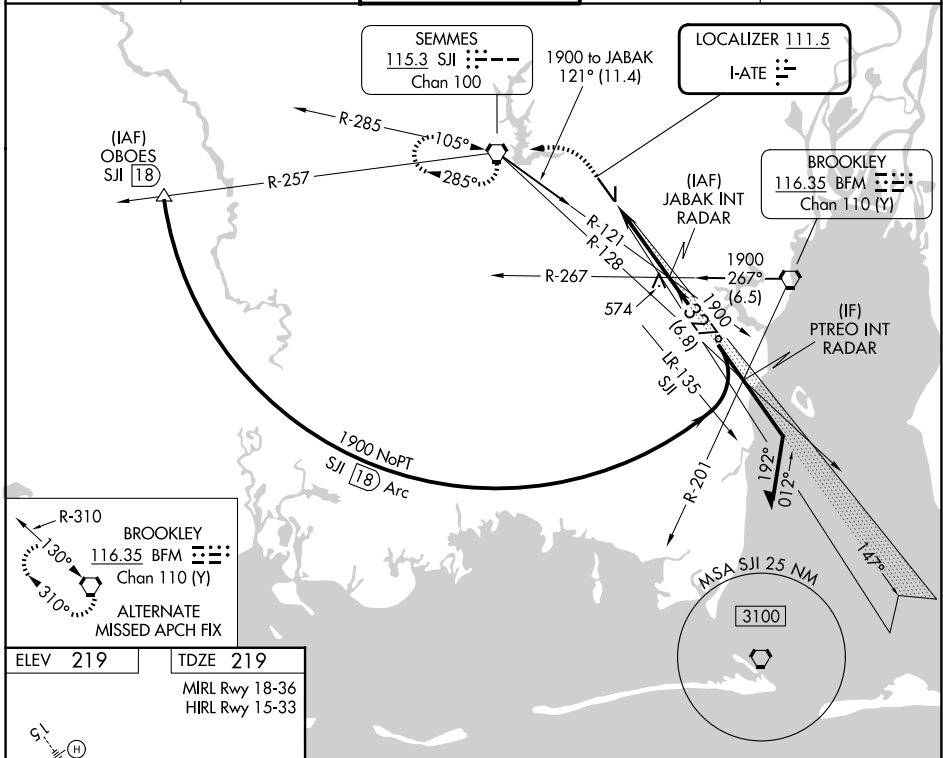
LOC I-ATE 111.5	APP CRS 327°	Rwy Ldg 8502
		TDZE 219
		Apt Elev 219

ILS or LOC RWY 33

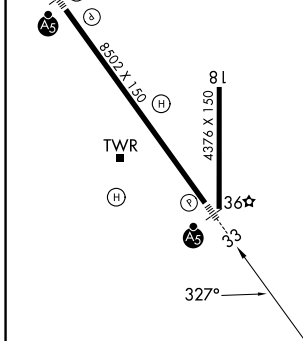
MOBILE RGNL (MOB)

 * RVR 1800 authorized with use of FD or AP or HUD to DA.	 MALSR	MISSED APPROACH: Climb to 700 then climbing left turn to 2000 direct SJI VORTAC and hold.

ATIS 124.75 257.85	MOBILE APP CON * 118.5 269.3	MOBILE TOWER * 118.3 (CTAF) 239.0	GND CON 121.9 348.6	UNICOM 122.95
------------------------------	--	---	-------------------------------	-------------------------



ELEV 219	TDZE 219
MIRL Rwy 18-36	
HIRL Rwy 15-33	



FAF to MAP 5.1 NM					
Knots	60	90	120	150	180
Min:Sec	5:06	3:24	2:33	2:02	1:42

700	2000	SJI	
↑	↩	⬠	
VGSI and ILS glidepath not coincident (VGSI Angle 3.00/TCH 50).			
JABAK INT RADAR		Remain within 10 NM	
1900		1900	
147°		327°	
1900		GS 3.00° TCH 57	
5.1 NM			

CATEGORY	A	B	C	D
S-ILS 33*	419/24 200 (200-½)			
S-LOC 33	660/24	441 (500-½)	660/45	441 (500-¾)
CIRCLING	680-1	461 (500-1)	740-1½ 521 (600-1½)	780-2 561 (600-2)

SE-4, 16 APR 2026 to 14 MAY 2026

SE-4, 16 APR 2026 to 14 MAY 2026