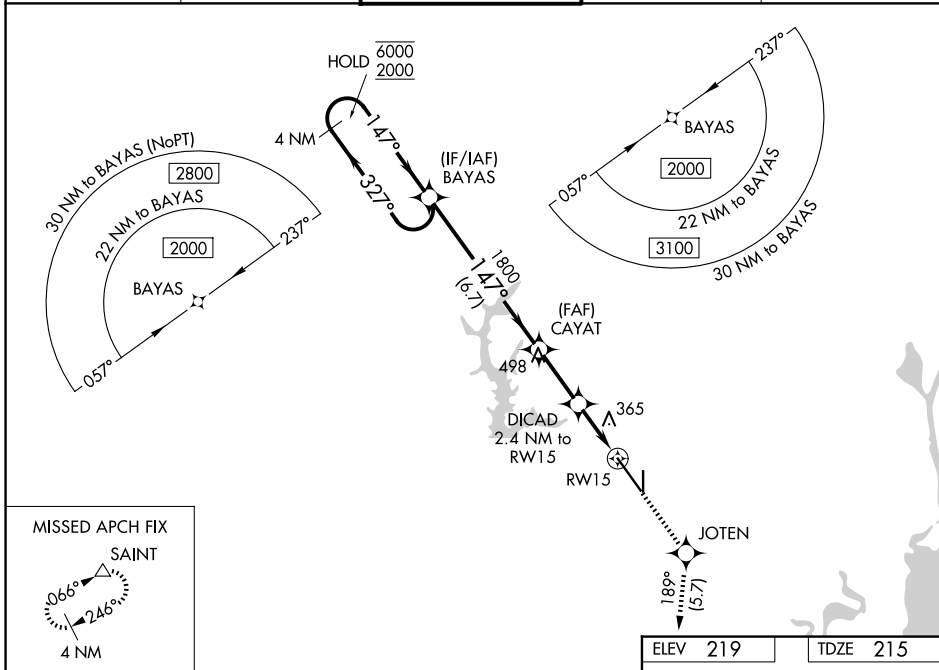


WAAS CH <b>97506</b> <b>W15A</b>	APP CRS <b>147°</b>	Rwy Ldg TDZE Apt Elev	<b>8502</b> <b>215</b> <b>219</b>
--	------------------------	-----------------------------	---

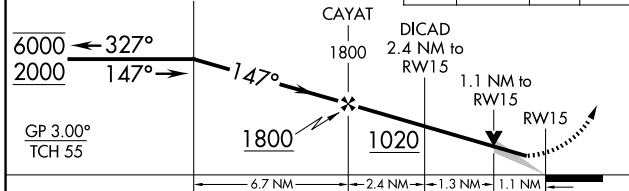
# RNAV (GPS) RWY 15

MOBILE RGNL (MOB)

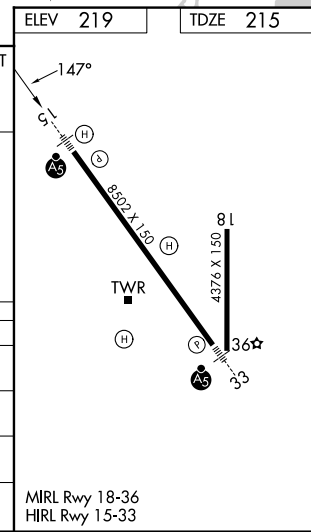
RNP APCH - GPS.		MOBILE TOWER ★		GND CON		UNICOM	
▼ For uncompensated Baro-VNAV systems, LNAV/VNAV NA below -4°C or above 42°C. For inop ALS, increase LNAV Cats C/D visibility to RVR 6000. * RVR 1800 authorized with use of FD or AP or HUD to DA.		<b>118.3 (CTAF) 239.0</b>		<b>121.9 348.6</b>		<b>122.95</b>	
ATIS	MOBILE APP CON ★	MOBILE TOWER ★		GND CON		UNICOM	
<b>124.75 257.85</b>	<b>118.5 269.3</b>	<b>118.3 (CTAF) 239.0</b>		<b>121.9 348.6</b>		<b>122.95</b>	



VGSI and RNAV glidepath not coincident (VGSI Angle 3.00/TCH 50).  
 4 NM Holding Pattern BAYAS



CATEGORY	A	B	C	D
LPV DA*		415/24	200 (200-½)	
LNAV/VNAV DA		636/45	421 (500-¾)	
LNAV MDA		620/40	405 (500-¾)	
CIRCLING	680-1	461 (500-1)	740-1½ 521 (600-1½)	780-2 561 (600-2)



SE-4, 16 APR 2026 to 14 MAY 2026

SE-4, 16 APR 2026 to 14 MAY 2026