


LOC/DME I-RUJ 108.5 Chan 22	APP CRS 320°	Rwy Ldg TDZE Apt Elev	9618 25 26
--	------------------------	-----------------------------	---------------------------------------

ILS or LOC RWY 32

MOBILE INTL (BFM)

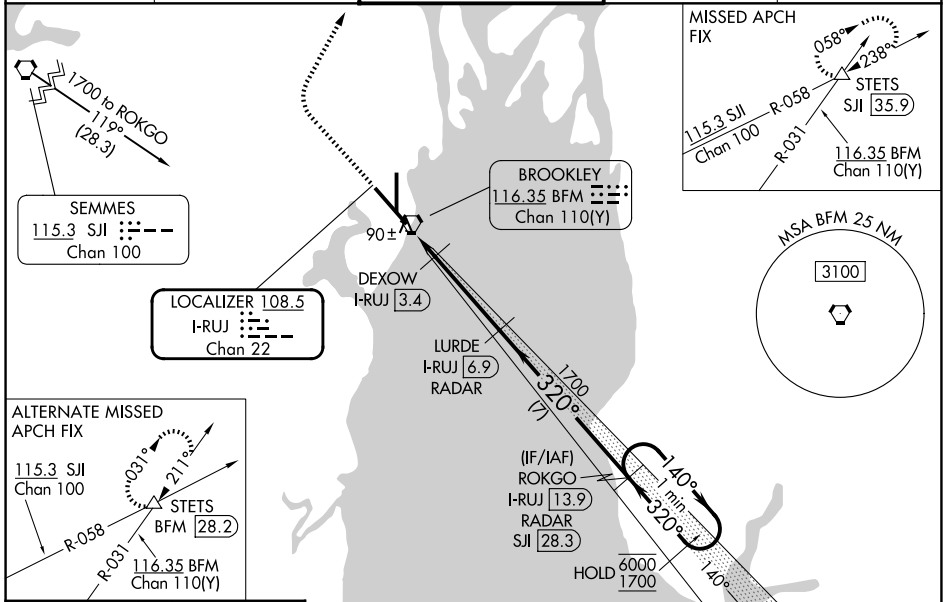
DME or RADAR required.

⚠ For inop ALS, increase S-LOC 32 Cat C/D visibility to 1¾ and DEXOW S-LOC 32 Cat C/D visibility to RVR 4500.

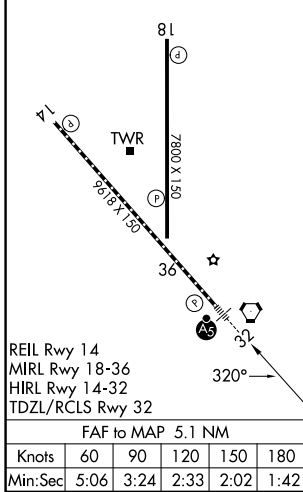
MALSR 

MISSED APPROACH: Climb to 800 then climbing right turn to 2000 on heading 030° and on SJJ R-058 to STETS INT/SJJ 35.9 DME and hold.

ATIS 135.575	MOBILE APP CON ★ 118.5 269.3	INTERNATIONAL TOWER ★ 118.8 (CTAF) 251.1	GND CON 121.7 239.3	UNICOM 122.95
------------------------	--	--	-------------------------------	-------------------------



ELEV 26	TDZE 25
---------	---------



800	2000	SJJ R-058	STETS	VGSI and ILS glidepath not coincident (VGSI Angle 3.00/TCH 71).	LURDE I-RUJ 6.9 RADAR	ROKGO I-RUJ 13.9 RADAR	One Minute Holding Pattern
hdg 030°		DEXOW I-RUJ 3.4		1700		320° → 140° → 6000 / 1700	
I-RUJ 1.8		I-RUJ 2.6		580		← 320°	
0.9 NM		0.8 NM		3.5 NM		7 NM	
CATEGORY	A	B	C	D			
S-ILS 32	225/18		200 (200-½)				
S-LOC 32	580/24	555 (600-½)	580/60	555 (600-1¼)			
CIRCLING	680-1	654 (700-1)	680-1¾ 654 (700-1¾)	1100-3 1074 (1100-3)			
DEXOW FIX MINIMUMS							
S-LOC 32	340/24		315 (400-½)				
CIRCLING	680-1	654 (700-1)	680-1¾ 654 (700-1¾)	1100-3 1074 (1100-3)			

SE-4, 16 APR 2026 to 14 MAY 2026

SE-4, 16 APR 2026 to 14 MAY 2026