

LOC/DME I-MTB <b>110.7</b> Chan <b>44</b>	APP CRS <b>278°</b>	Rwy Ldg TDZE <b>7000</b> <b>257</b>	Apt Elev <b>257</b>
---	------------------------	---	------------------------

# LOC RWY 28L

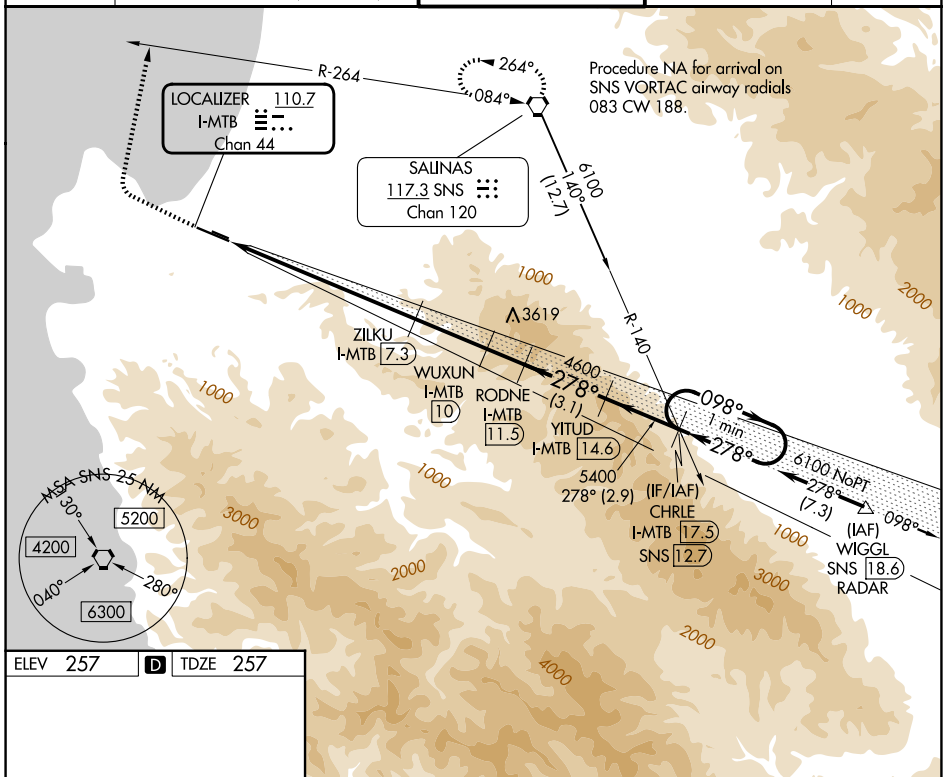
MONTEREY RGNL (MRY)

DME required. DME or RADAR required for procedure entry.

**⚠** Circling NA south of Rwy 10R-28L. Rwy 28L helicopter visibility reduction below 3/4 SM NA.

**MISSED APPROACH:** Climb to 3000 then climbing right turn to 5000 on heading 360° and SNS VORTAC R-264 to SNS VORTAC and hold.

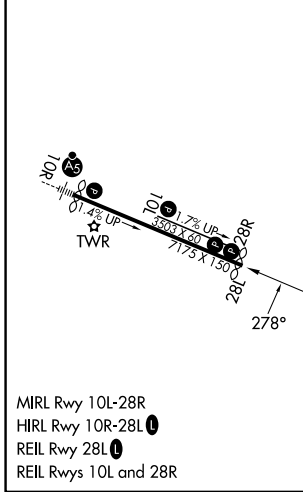
ATIS <b>119.25</b>	NORCAL APP CON <b>133.0 251.15</b> (001°-135°) <b>127.15 307.125</b> (136°-360°)	MONTEREY TOWER ★ <b>118.4</b> (CTAF) <b>257.8</b>	GND CON <b>120.875 348.6</b>	UNICOM <b>122.95</b>
-----------------------	--	--	---------------------------------	-------------------------



SW-2, 16 APR 2026 to 14 MAY 2026

SW-2, 16 APR 2026 to 14 MAY 2026

ELEV 257	<b>D</b>	TDZE 257
----------	----------	----------



	3000	5000	SNS R-264	SNS	CHRLE
	↑	hdg 360°			
					One Minute Holding Pattern
	I-MTB DME	ZILKU I-MTB (7.3)	WUXUN I-MTB (10)	YITUD I-MTB (14.6)	CHRLE I-MTB (17.5)
	I-MTB (0.1)	I-MTB (4.1)	I-MTB (7.3)	I-MTB (11.5)	I-MTB (14.6)
			≤ 3.50° TCH 47	4600	5400
	4.2 NM	3.2 NM	2.7 NM	1.5 NM	3.1 NM
					278° ← 098° → 6100
CATEGORY	A	B	C	D	
S-LOC 28L	1860-1¼ 1603 (1700-1¼)	1860-1½ 1603 (1700-1½)	1860-3	1603 (1700-3)	
CIRCLING	1860-1¼ 1603 (1700-1¼)	1860-1½ 1603 (1700-1½)	1860-3	1603 (1700-3)	