

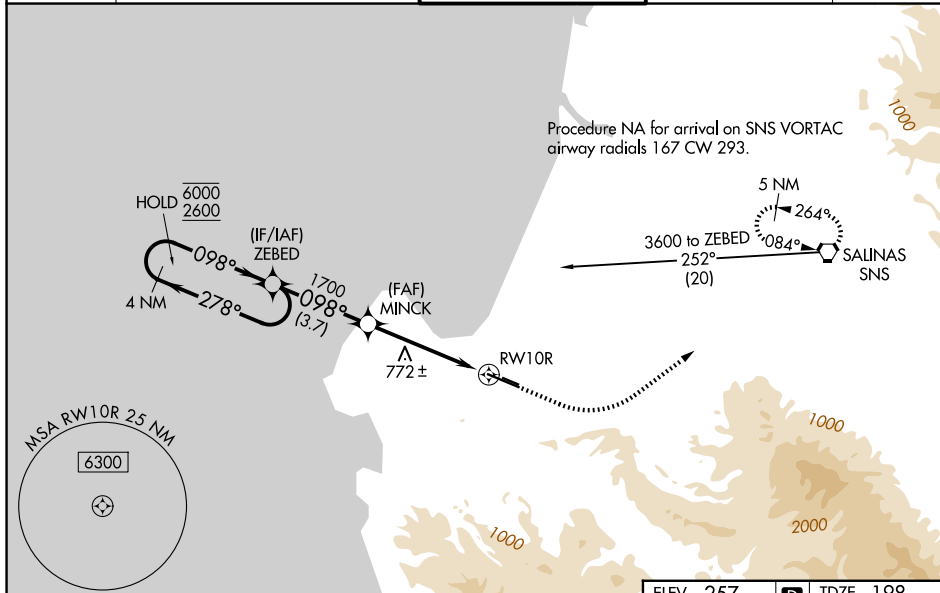
WAAS CH 69602 W10A	APP CRS 098°	Rwy Ldg TDZE Apt Elev	7000 198 257
--	------------------------	-----------------------------	---

RNAV (GPS) RWY 10R

MONTEREY RGNL (MRY)

RNP APCH - GPS.	MALSR	MISSED APPROACH: Climb to 1000 then climbing left turn to 5000 direct SNS VORTAC and hold, continue climb-in-hold to 5000. *Missed approach requires minimum climb of 387 feet per NM to 1700.
<p>⚠ For uncompensated Baro-VNAV systems, LNAV/VNAV NA below 2°C or above 54°C. Circling NA south of Rwy 10R-28L. For inop ALS, increase LPV all Cats visibility to 1½ SM and LNAV Cat C/D visibility to 2½ SM. *RVR 1800 authorized with use of FD or AP or HUD to DA.</p>		

ATIS 119.25	NORCAL APP CON 133.0 251.15 (001°-135°) 127.15 307.125 (136°-360°)	MONTEREY TOWER * 118.4 (CTAF) 257.8	GND CON 120.875 348.6	UNICOM 122.95
-----------------------	--	--	---------------------------------	-------------------------



SW-2, 16 APR 2026 to 14 MAY 2026

SW-2, 16 APR 2026 to 14 MAY 2026

ELEV 257		D TDZE 198	
<p>4 NM Holding Pattern</p> <p>6000 ← 278°</p> <p>2600 → 098°</p> <p>GP 3.00°</p> <p>TCH 45</p>		<p>1000</p> <p>5000</p> <p>SNS</p>	
<p>ZEBED</p> <p>4 NM</p> <p>278°</p> <p>098°</p> <p>1700</p> <p>3.7 NM</p>		<p>MINCK</p> <p>1700</p> <p>2.4 NM to RWY 10R</p> <p>RWY 10R</p> <p>2.3 NM</p> <p>2.4 NM</p>	
CATEGORY	A	B	C
LPV DA*	398/24		200 (200-½)
LPV DA	677/50		479 (500-1)
LNAV/VNAV DA	754/60		556 (500-1¼)
LNAV MDA	980/24 782 (800-½)	980/40 782 (800-¾)	980-1¾ 782 (800-1¾)
CIRCLING	980-1 723 (800-1)	980-1¼ 723 (800-1¼)	1280-3 1023 (1100-3)
<p>MIRL Rwy 10L-28R</p> <p>HIRL Rwy 10R-28L</p> <p>REIL Rwy 28L</p> <p>REIL Rwy 10L and 28R</p>			