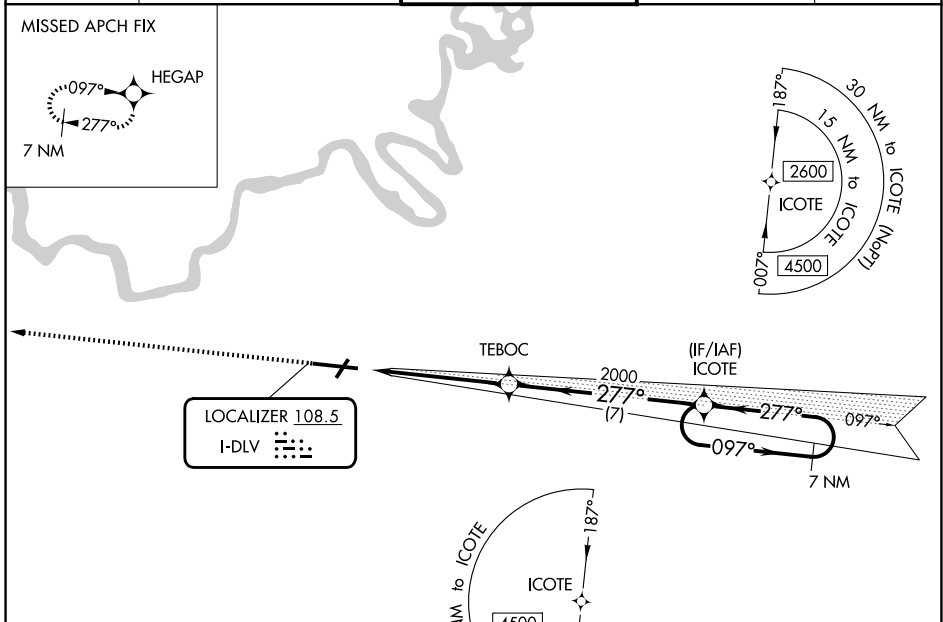


| | | | |
|--------------|-------------|----------|-------------|
| LOC I-DLV | APP CRS | Rwy Ldg | 9020 |
| 108.5 | 277° | TDZE | 197 |
| | | Apt Elev | 221 |

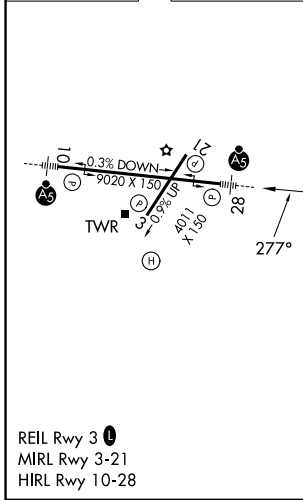
ILS Z RWY 28

MONTGOMERY RGNL (DANNELLY FLD) (MGM)

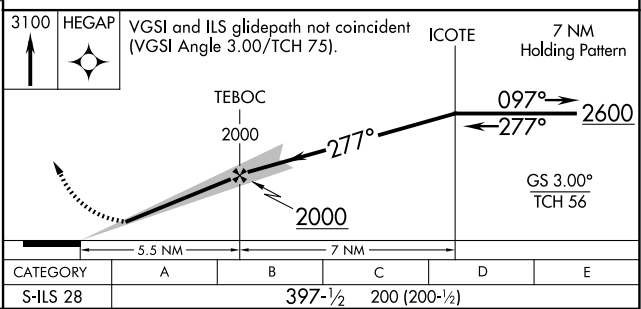
| | | | | |
|--|--------|---|---|---|
| NA GPS required. For inop MALSRL, increase S-ILS 28 Cat E visibility to 3/4 mile. | MALSRL | MISSED APPROACH: Climb to 3100 direct HEGAP and hold. | | |
| | | ATIS 120.675 | MONTGOMERY APP CON* 124.0 363.025 | DANNELLY TOWER* 119.7 (CTAF) 360.85 |



| | |
|----------|----------|
| ELEV 221 | TDZE 197 |
|----------|----------|



GPS REQUIRED



SE-4, 16 APR 2026 to 14 MAY 2026

SE-4, 16 APR 2026 to 14 MAY 2026